

For Research Use Only

# SEMA3B Recombinant antibody

Catalog Number: 84080-3-RR



## Basic Information

### Catalog Number:

84080-3-RR

### Size:

100ul, Concentration: 400 µg/ml by Nanodrop;

### Source:

Rabbit

### Isotype:

IgG

### Immunogen Catalog Number:

AG25163

### GenBank Accession Number:

BC009113

### GeneID (NCBI):

7869

### UNIPROT ID:

Q13214

### Full Name:

sema domain, immunoglobulin domain (Ig), short basic domain, secreted, (semaphorin) 3B

### Observed MW:

83 kDa

### Purification Method:

Protein A purification

### CloneNo.:

241171A7

### Recommended Dilutions:

WB 1:1000-1:4000

IF/ICC 1:250-1:1000

## Applications

### Tested Applications:

WB, IF/ICC, ELISA

### Species Specificity:

human

### Positive Controls:

WB : HeLa cells, HepG2 cells, MCF-7 cells, U-251 cells, SK-N-SH cells

IF/ICC : U-251 cells,

## Background Information

SEMA3B is a class 3 semaphorin/collapsin family member containing 749 highly conserved, NH2 terminal, semaphorin amino acids. SEMA3B is characterized as a strong suppressing factor of the proliferation of cancerous cells and also by its anti-angiogenic effect. SEMA3B has been found in lung cancer, ovarian cancer, hepatocellular carcinoma, and cholangiocarcinoma. SEMA3B is expressed abundantly but differentially in various neural and nonneural tissues. The calculated molecular weight of SEMA3B is 83 kDa (PMID: 30914894, PMID: 32410560).

## Storage

### Storage:

Store at -20°C. Stable for one year after shipment.

### Storage Buffer:

PBS with 0.02% sodium azide and 50% glycerol, pH7.3

Aliquoting is unnecessary for -20°C storage

\*\*\* 20ul sizes contain 0.1% BSA

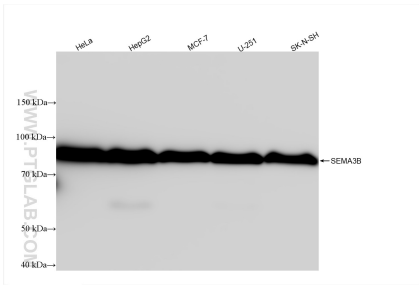
For technical support and original validation data for this product please contact:

T: 1 (888) 4PTGLAB (1-888-478-4522) (toll free in USA), or 1(312) 455-8498 (outside USA)

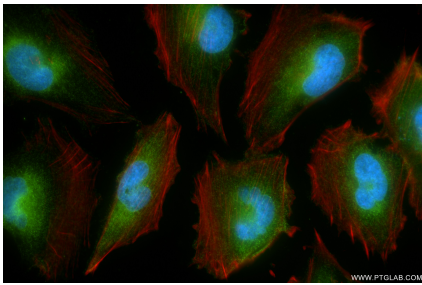
E: [proteintech@ptglab.com](mailto:proteintech@ptglab.com)  
W: [ptglab.com](http://ptglab.com)

This product is exclusively available under Proteintech Group brand and is not available to purchase from any other manufacturer.

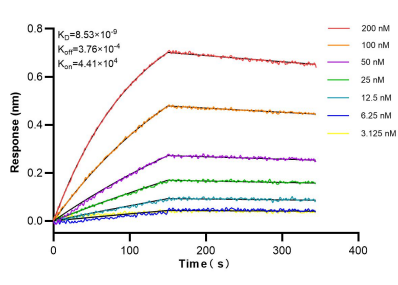
Selected Validation Data



Various lysates were subjected to SDS PAGE followed by western blot with 84080-3-RR (SEMA3B antibody) at dilution of 1:2000 incubated at room temperature for 1.5 hours.



Immunofluorescent analysis of (4% PFA) fixed U-251 cells using SEMA3B antibody (84080-3-RR, Clone: 241171A7) at dilution of 1:500 and CoraLite® 488-Conjugated Goat Anti-Rabbit IgG(H+L) (SA00013-2), CL594-Phalloidin (red).



Biolayer interferometry (BLI) kinetic assays of 84080-3-RR against Human SEMA3B were performed. The affinity constant is 8.53 nM.