

For Research Use Only

VGLUT2 Recombinant antibody, PBS Only (Detector)

Catalog Number: 84083-2-PBS



Basic Information

Catalog Number: 84083-2-PBS	GenBank Accession Number: NM_020346	Purification Method: Protein A purification
Size: 100ug , Concentration: 1 mg/ml by Nanodrop;	GeneID (NCBI): 57084	CloneNo.: 241255B5
Source: Rabbit	UNIPROT ID: Q9P2U8	
Isotype: IgG	Full Name: solute carrier family 17 (sodium-dependent inorganic phosphate cotransporter), member 6	
Immunogen Catalog Number: AG29565	Calculated MW: 64 kDa	
	Observed MW: 60 kDa	

Applications

Tested Applications:
WB, IF-Fro, Cytometric bead array, Indirect ELISA

Species Specificity:
human, mouse

Product Information

84083-2-PBS targets VGLUT2 as part of a matched antibody pair.

MP00998-1: 84083-1-PBS capture and 84083-2-PBS detection (validated in Cytometric bead array)

Unconjugated rabbit recombinant monoclonal antibody in PBS only (BSA and azide free) storage buffer at a concentration of 1 mg/mL, ready for conjugation. Created using Proteintech's proprietary in-house recombinant technology. Recombinant production enables unrivalled batch-to-batch consistency, easy scale-up, and future security of supply.

This conjugation ready format makes antibodies ideal for use in many applications including: ELISAs, multiplex assays requiring matched pairs, mass cytometry, and multiplex imaging applications. Antibody use should be optimized by the end user for each application and assay.

Background Information

VGLUT2, also known as SLC17A6, belongs to the major facilitator superfamily. VGLUT2 is a multifunctional transporter that transports phosphate at the plasma membrane and glutamate in synaptic vesicles (PMID:33440152, 11432869). VGLUT2 is involved in neurotransmitter loading into synaptic vesicles (PMID: 11698620). VGLUT2 is predominantly expressed in adult and fetal brain, with highest expression in the medulla, substantia nigra, subthalamic nucleus, and thalamus, and low levels in the cerebellum and hippocampus (PMID:10820226).

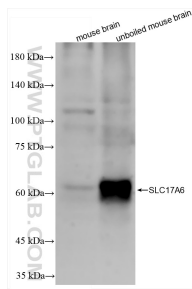
Storage

Storage:
Store at -80°C.
Storage Buffer:
PBS Only

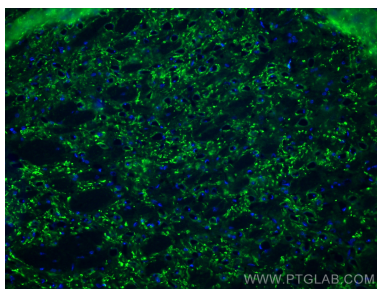
For technical support and original validation data for this product please contact:
T: 1 (888) 4PTGLAB (1-888-478-4522) (toll free in USA), or 1(312) 455-8498 (outside USA)
E: proteintech@ptglab.com
W: ptglab.com

This product is exclusively available under Proteintech Group brand and is not available to purchase from any other manufacturer.

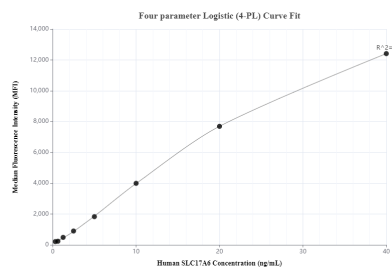
Selected Validation Data



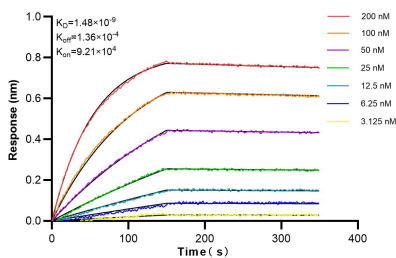
Various lysates were subjected to SDS PAGE followed by western blot with 84083-2-RR (VGLUT2 antibody) at dilution of 1:10000 incubated at room temperature for 1.5 hours. This data was developed using the same antibody clone with 84083-2-PBS in a different storage buffer formulation.



Immunofluorescent analysis of (4% PFA) fixed frozen OCT-embedded mouse brain tissue using VGLUT2 antibody (84083-2-RR, Clone: 241255B5) at dilution of 1:400 and CoraLite®488-Conjugated Goat Anti-Rabbit IgG(H+L) (SA00013-2). This data was developed using the same antibody clone with 84083-2-PBS in a different storage buffer formulation.



Cytometric bead array standard curve of MP00998-1, SLC17A6 Recombinant Matched Antibody Pair, PBS Only. Capture antibody: 84083-1-PBS. Detection antibody: 84083-2-PBS. Standard: Ag29565. Range: 0.313-40 ng/mL



Biolayer interferometry (BLI) kinetic assays of 84083-2-RR against Human VGLUT2 were performed. The affinity constant is 1.48 nM.