

For Research Use Only

# VGLUT2 Recombinant antibody

Catalog Number: 84083-2-RR



## Basic Information

<b>Catalog Number:</b> 84083-2-RR	<b>GenBank Accession Number:</b> NM_020346	<b>Purification Method:</b> Protein A purification
<b>Size:</b> 100ul , Concentration: 1000 ug/ml by Nanodrop;	<b>GeneID (NCBI):</b> 57084	<b>CloneNo.:</b> 241255B5
<b>Source:</b> Rabbit	<b>UNIPROT ID:</b> Q9P2U8	<b>Recommended Dilutions:</b> WB 1:5000-1:50000 IF-Fro 1:200-1:800
<b>Isotype:</b> IgG	<b>Full Name:</b> solute carrier family 17 (sodium-dependent inorganic phosphate cotransporter), member 6	
<b>Immunogen Catalog Number:</b> AG29565	<b>Calculated MW:</b> 64 kDa	
	<b>Observed MW:</b> 60 kDa	

## Applications

<b>Tested Applications:</b> WB, IF-Fro, ELISA	<b>Positive Controls:</b>
<b>Species Specificity:</b> human, mouse	<b>WB :</b> unboiled mouse brain tissue, <b>IF-Fro :</b> mouse brain tissue,

## Background Information

VGLUT2, also known as SLC17A6, belongs to the major facilitator superfamily. VGLUT2 is a multifunctional transporter that transports phosphate at the plasma membrane and glutamate in synaptic vesicles (PMID:33440152, 11432869). VGLUT2 is involved in neurotransmitter loading into synaptic vesicles (PMID: 11698620). VGLUT2 is predominantly expressed in adult and fetal brain, with highest expression in the medulla, substantia nigra, subthalamic nucleus, and thalamus, and low levels in the cerebellum and hippocampus (PMID:10820226).

## Storage

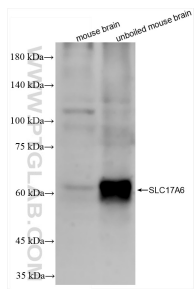
**Storage:**  
Store at -20°C. Stable for one year after shipment.  
**Storage Buffer:**  
PBS with 0.02% sodium azide and 50% glycerol pH 7.3.  
**Aliquoting is unnecessary for -20°C storage**

\*\*\* 20ul sizes contain 0.1% BSA

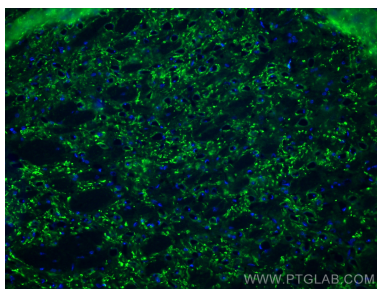
For technical support and original validation data for this product please contact:  
T: 1 (888) 4PTGLAB (1-888-478-4522) (toll free in USA), or 1(312) 455-8498 (outside USA)  
E: proteintech@ptglab.com  
W: ptglab.com

This product is exclusively available under Proteintech Group brand and is not available to purchase from any other manufacturer.

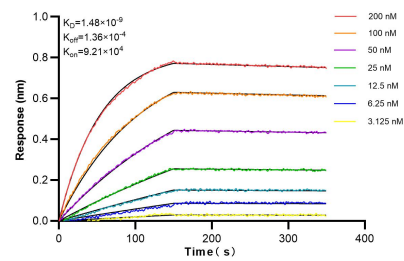
Selected Validation Data



Various lysates were subjected to SDS PAGE followed by western blot with 84083-2-RR (VGLUT2 antibody) at dilution of 1:10000 incubated at room temperature for 1.5 hours.



Immunofluorescent analysis of (4% PFA) fixed frozen OCT-embedded mouse brain tissue using VGLUT2 antibody (84083-2-RR, Clone: 241255B5 ) at dilution of 1:400 and CoraLite®488-Conjugated Goat Anti-Rabbit IgG(H+L) (SA00013-2).



Biolayer interferometry (BLI) kinetic assays of 84083-2-RR against Human VGLUT2 were performed. The affinity constant is 1.48 nM.