

For Research Use Only

TCF1/TCF7 Recombinant antibody

Catalog Number: 84089-4-RR



Basic Information

Catalog Number: 84089-4-RR	GenBank Accession Number: BC048769	Purification Method: Protein A purification
Size: 100ul , Concentration: 1000 ug/ml by Nanodrop;	GeneID (NCBI): 6932	CloneNo.: 241154D2
Source: Rabbit	ENSEMBL Gene ID: ENSG00000081059	Recommended Dilutions: WB 1:5000-1:50000
Isotype: IgG	UNIPROT ID: P36402	
Immunogen Catalog Number: AG5792	Full Name: transcription factor 7 (T-cell specific, HMG-box)	
	Calculated MW: 42 kDa	
	Observed MW: 58 kDa	

Applications

Tested Applications: WB, ELISA	Positive Controls: WB : PC-3 cells,
Species Specificity: human, mouse	

Background Information

TCF7, also known as TCF1, belongs to the TCF/LEF family. TCF7 is part of the Wnt signaling pathway and plays an important role in the differentiation and self-renewal of memory T cells. It has been found that TCF7 is necessary to revive T cells in response to PD-1 blockade against viral infection or cancer. TCF7 is mainly expressed in T-cells and is also detected in proliferating intestinal epithelial cells and in the basal epithelial cells of mammary gland epithelium. TCF7 has 16 isoforms with the molecular mass of 28-54 kDa (PMID: 34044317).

Storage

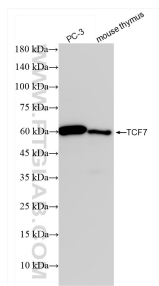
Storage:
Store at -20°C. Stable for one year after shipment.
Storage Buffer:
PBS with 0.02% sodium azide and 50% glycerol pH 7.3.
Aliquoting is unnecessary for -20°C storage

*** 20ul sizes contain 0.1% BSA

For technical support and original validation data for this product please contact:
T: 1 (888) 4PTGLAB (1-888-478-4522) (toll free in USA), or 1(312) 455-8498 (outside USA)
E: proteintech@ptglab.com
W: ptglab.com

This product is exclusively available under Proteintech Group brand and is not available to purchase from any other manufacturer.

Selected Validation Data



Various lysates were subjected to SDS PAGE followed by western blot with 84089-4-RR (TCF7 antibody) at dilution of 1:10000 incubated at room temperature for 1.5 hours.