

For Research Use Only

Mouse IGFBP2 Recombinant antibody, PBS Only (Capture)

Catalog Number: 84092-1-PBS



Basic Information

Catalog Number: 84092-1-PBS	GenBank Accession Number: NM_008342.3	Purification Method: Protein A purification
Size: 100ug , Concentration: 1 mg/ml by Nanodrop;	GeneID (NCBI): 16008	CloneNo.: 241363D12
Source: Rabbit	UNIPROT ID: P47877	
Isotype: IgG	Full Name: insulin-like growth factor binding protein 2	
	Calculated MW: 33kDa	
	Observed MW: 33-35 kDa	

Applications

Tested Applications:
WB, Cytometric bead array, Sandwich ELISA, Indirect ELISA, Sample test

Species Specificity:
human, mouse

Product Information

84092-1-PBS targets IGFBP2 as part of a matched antibody pair.

MP01011-1: 84092-1-PBS capture and 84092-2-PBS detection (validated in Cytometric bead array, Sandwich ELISA)

Unconjugated rabbit recombinant monoclonal antibody in PBS only (BSA and azide free) storage buffer at a concentration of 1 mg/mL, ready for conjugation. Created using Proteintech's proprietary in-house recombinant technology. Recombinant production enables unrivalled batch-to-batch consistency, easy scale-up, and future security of supply.

This conjugation ready format makes antibodies ideal for use in many applications including: ELISAs, multiplex assays requiring matched pairs, mass cytometry, and multiplex imaging applications. Antibody use should be optimized by the end user for each application and assay.

Background Information

IGFBP2 is a key member of the IGFBP family that is highly expressed in embryonic and fetal tissues and decreases significantly after birth. IGFBP2 mediates IGF-independent tumorigenesis by participating in intracellular and nuclear regulatory networks and may serve as an excellent prognostic biomarker in various cancers (PMID: 35546443).

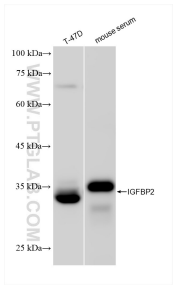
Storage

Storage:
Store at -80°C.
Storage Buffer:
PBS Only

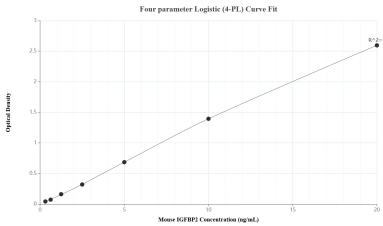
For technical support and original validation data for this product please contact:
T: 1 (888) 4PTGLAB (1-888-478-4522) (toll free in USA), or 1(312) 455-8498 (outside USA)
E: proteintech@ptglab.com
W: ptglab.com

This product is exclusively available under Proteintech Group brand and is not available to purchase from any other manufacturer.

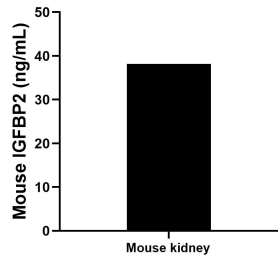
Selected Validation Data



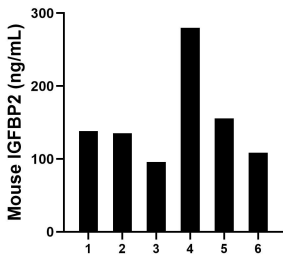
Various lysates were subjected to SDS PAGE followed by western blot with 84092-1-RR (IGFBP2 antibody) at dilution of 1:2000 incubated at room temperature for 1.5 hours. This data was developed using the same antibody clone with 84092-1-PBS in a different storage buffer formulation.



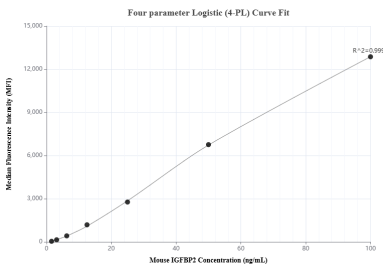
Sandwich ELISA standard curve of MP01011-1, Mouse IGFBP2 Recombinant Matched Antibody Pair - PBS only. 84092-1-PBS was coated to a plate as the capture antibody and incubated with serial dilutions of standard Eg1196. 84092-2-PBS was HRP conjugated as the detection antibody. Range: 0.313-20 ng/mL



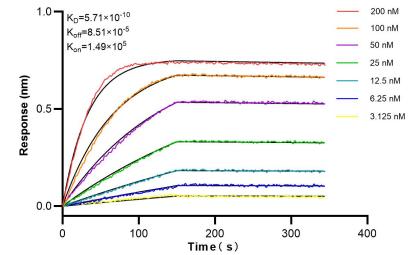
One mouse kidney was cultured for 18 hours in RPMI 1640 supplemented with 10% fetal bovine serum, 50 μ M β -mercaptoethanol, 2 mM L-glutamine, and 100 μ g/mL of streptomycin sulfate. The cells were stimulated with 10 μ g/mL of PHA and 10 ng/mL of PMA. An aliquot of the cell culture supernatant was removed, assayed for mouse IGFBP2 and measured 38.18 ng/mL



Serum of six mouse was measured. The IGFBP2 concentration of detected samples was determined to be 152.26 ng/mL with a range of 95.84-279.86 ng/mL



Cytometric bead array standard curve of MP01011-1, MOUSE IGFBP2 Recombinant Matched Antibody Pair, PBS Only. Capture antibody: 84092-1-PBS. Detection antibody: 84092-2-PBS. Standard: Eg1196. Range: 1.563-100 ng/mL



Bi-layer interferometry (BLI) kinetic assays of 84092-1-RR against Mouse IGFBP2 were performed. The affinity constant is 0.571 nM.