

For Research Use Only

IGFBP2 Recombinant antibody

Catalog Number: 84092-1-RR



Basic Information

Catalog Number: 84092-1-RR	GenBank Accession Number: NM_008342.3	Purification Method: Protein A purification
Size: 100ul , Concentration: 1000 µg/ml by Nanodrop;	GeneID (NCBI): 16008	CloneNo.: 241363D12
Source: Rabbit	UNIPROT ID: P47877	Recommended Dilutions: WB 1:1000-1:4000
Isotype: IgG	Full Name: insulin-like growth factor binding protein 2	
	Calculated MW: 33kDa	
	Observed MW: 33-35 kDa	

Applications

Tested Applications: WB, ELISA	Positive Controls: WB : T-47D cells, mouse serum
Species Specificity: human, mouse	

Background Information

IGFBP2 is a key member of the IGFBP family that is highly expressed in embryonic and fetal tissues and decreases significantly after birth. IGFBP2 mediates IGF-independent tumorigenesis by participating in intracellular and nuclear regulatory networks and may serve as an excellent prognostic biomarker in various cancers (PMID: 35546443).

Storage

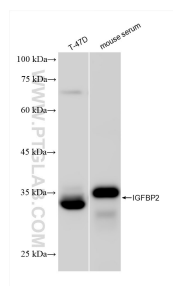
Storage:
Store at -20°C. Stable for one year after shipment.
Storage Buffer:
PBS with 0.02% sodium azide and 50% glycerol pH 7.3.
Aliquoting is unnecessary for -20°C storage

*** 20ul sizes contain 0.1% BSA

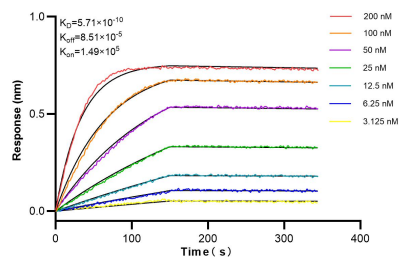
For technical support and original validation data for this product please contact:
T: 1 (888) 4PTGLAB (1-888-478-4522) (toll free in USA), or 1(312) 455-8498 (outside USA)
E: proteintech@ptglab.com
W: ptglab.com

This product is exclusively available under Proteintech Group brand and is not available to purchase from any other manufacturer.

Selected Validation Data



Various lysates were subjected to SDS PAGE followed by western blot with 84092-1-RR (IGFBP2 antibody) at dilution of 1:2000 incubated at room temperature for 1.5 hours.



Biolayer interferometry (BLI) kinetic assays of 84092-1-RR against Mouse IGFBP2 were performed. The affinity constant is 0.571 nM.