

For Research Use Only

# Mouse IGFBP2 Recombinant antibody, PBS Only (Detector)

Catalog Number: 84092-2-PBS



## Basic Information

<b>Catalog Number:</b> 84092-2-PBS	<b>GenBank Accession Number:</b> NM_008342.3	<b>Purification Method:</b> Protein A purification
<b>Size:</b> 100ug , Concentration: 1 mg/ml by Nanodrop;	<b>GeneID (NCBI):</b> 16008	<b>CloneNo.:</b> 241363G4
<b>Source:</b> Rabbit	<b>UNIPROT ID:</b> P47877	
<b>Isotype:</b> IgG	<b>Full Name:</b> insulin-like growth factor binding protein 2	
	<b>Calculated MW:</b> 33kDa	

## Applications

**Tested Applications:**  
Cytometric bead array, Sandwich ELISA, Indirect ELISA, Sample test

**Species Specificity:**  
mouse

## Product Information

84092-2-PBS targets IGFBP2 as part of a matched antibody pair:

MP01011-1: 84092-1-PBS capture and 84092-2-PBS detection (validated in Cytometric bead array, Sandwich ELISA)

Unconjugated rabbit recombinant monoclonal antibody in PBS only (BSA and azide free) storage buffer at a concentration of 1 mg/mL, ready for conjugation. Created using Proteintech's proprietary in-house recombinant technology. Recombinant production enables unrivalled batch-to-batch consistency, easy scale-up, and future security of supply.

This conjugation ready format makes antibodies ideal for use in many applications including: ELISAs, multiplex assays requiring matched pairs, mass cytometry, and multiplex imaging applications. Antibody use should be optimized by the end user for each application and assay.

## Storage

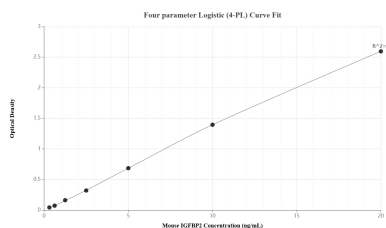
**Storage:**  
Store at -80°C.

**Storage Buffer:**  
PBS Only

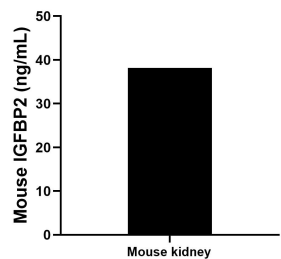
For technical support and original validation data for this product please contact:  
T: 1 (888) 4PTGLAB (1-888-478-4522) (toll free in USA), or 1(312) 455-8498 (outside USA)  
E: [proteintech@ptglab.com](mailto:proteintech@ptglab.com)  
W: [ptglab.com](http://ptglab.com)

This product is exclusively available under Proteintech Group brand and is not available to purchase from any other manufacturer.

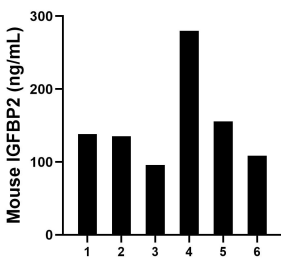
## Selected Validation Data



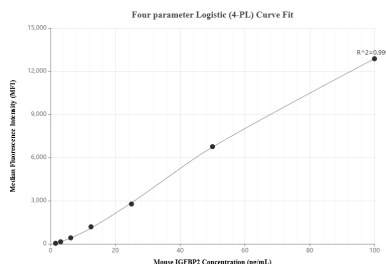
Sandwich ELISA standard curve of MP01011-1, Mouse IGFBP2 Recombinant Matched Antibody Pair - PBS only. 84092-1-PBS was coated to a plate as the capture antibody and incubated with serial dilutions of standard Eg1196. 84092-2-PBS was HRP conjugated as the detection antibody. Range: 0.313-20 ng/mL.



One mouse kidney was cultured for 18 hours in RPMI 1640 supplemented with 10% fetal bovine serum, 50  $\mu$ M  $\beta$ -mercaptoethanol, 2 mM L-glutamine, and 100  $\mu$ g/mL of streptomycin sulfate. The cells were stimulated with 10  $\mu$ g/mL of PHA and 10 ng/mL of PMA. An aliquot of the cell culture supernatant was removed, assayed for mouse IGFBP2 and measured 38.18 ng/mL.



Serum of six mouse was measured. The IGFBP2 concentration of detected samples was determined to be 152.26 ng/mL with a range of 95.84-279.86 ng/mL.



Cytometric bead array standard curve of MP01011-1, MOUSE IGFBP2 Recombinant Matched Antibody Pair, PBS Only. Capture antibody: 84092-1-PBS. Detection antibody: 84092-2-PBS. Standard: Eg1196. Range: 1.563-100 ng/mL.