

For Research Use Only

# PTX3 Recombinant antibody, PBS Only (Capture/Detector)

Catalog Number: 84096-2-PBS



## Basic Information

**Catalog Number:**

84096-2-PBS

**Size:**

100ug, Concentration: 1 mg/ml by Nanodrop;

**Source:**

Rabbit

**Isotype:**

IgG

**GenBank Accession Number:**

NM\_002852.4

**GeneID (NCBI):**

5806

**UNIPROT ID:**

P26022

**Full Name:**

pentraxin-related gene, rapidly induced by IL-1 beta

**Calculated MW:**

42 kDa

**Purification Method:**

Protein A purification

**CloneNo.:**

241393C10

## Applications

**Tested Applications:**

Cytometric bead array, Sandwich ELISA, Indirect ELISA, Sample test

**Species Specificity:**

human

## Product Information

84096-2-PBS targets PTX3 as part of a matched antibody pair:

MP01014-1: 84096-4-PBS capture and 84096-2-PBS detection (validated in Cytometric bead array)

MP01014-2: 84096-2-PBS capture and 84096-1-PBS detection (validated in Cytometric bead array)

MP01014-4: 84096-2-PBS capture and 84096-4-PBS detection (validated in Sandwich ELISA)

Unconjugated rabbit recombinant monoclonal antibody in PBS only (BSA and azide free) storage buffer at a concentration of 1 mg/mL, ready for conjugation. Created using Proteintech's proprietary in-house recombinant technology. Recombinant production enables unrivalled batch-to-batch consistency, easy scale-up, and future security of supply.

This conjugation ready format makes antibodies ideal for use in many applications including: ELISAs, multiplex assays requiring matched pairs, mass cytometry, and multiplex imaging applications. Antibody use should be optimized by the end user for each application and assay.

## Storage

**Storage:**

Store at -80°C.

**Storage Buffer:**

PBS only

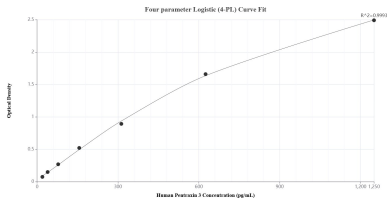
For technical support and original validation data for this product please contact:

T: 1 (888) 4PTGLAB (1-888-478-4522) (toll free in USA), or 1(312) 455-8498 (outside USA)

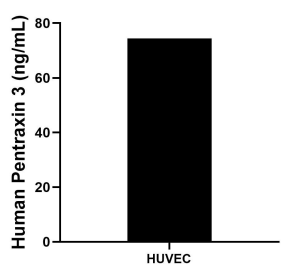
E: [proteintech@ptglab.com](mailto:proteintech@ptglab.com)  
W: [ptglab.com](http://ptglab.com)

This product is exclusively available under Proteintech Group brand and is not available to purchase from any other manufacturer.

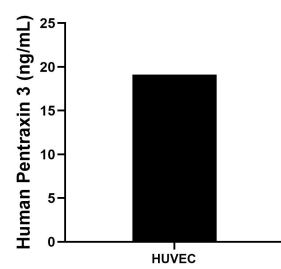
Selected Validation Data



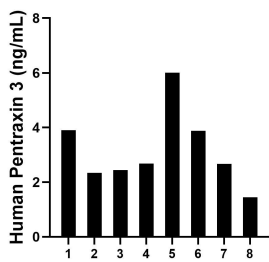
Sandwich ELISA standard curve of MP01014-4, Human Pentraxin 3 Recombinant Matched Antibody Pair - PBS only. 84096-2-PBS was coated to a plate as the capture antibody and incubated with serial dilutions of standard Eg1303. 84096-4-PBS was HRP conjugated as the detection antibody. Range: 19.5-1250 pg/mL



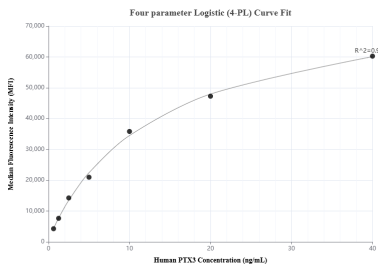
HUVEC were cultured in DMEM supplemented with 10% fetal bovine serum, 2.5 mM L-glutamine, 100 U/mL penicillin, and 100 µg/mL streptomycin sulfate. An aliquot of the cell culture supernate was removed, assayed for human Pentraxin 3, and measured 74.4 ng/mL



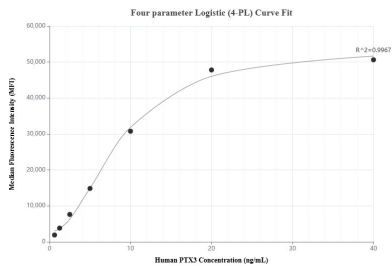
The mean Pentraxin 3 concentration was determined to be 19.1 ng/mL in HUVEC cell extract based on a 1.1 mg/mL extract load.



Serum of eight individual healthy human donors was measured. The Pentraxin 3 concentration of detected samples was determined to be 3.2 ng/mL with a range of 1.5-6.0 ng/mL



Cytometric bead array standard curve of MP01014-1, Pentraxin 3 Recombinant Matched Antibody Pair, PBS Only. Capture antibody: 84096-4-PBS. Detection antibody: 84096-2-PBS. Standard: Eg1303. Range: 0.625-40 ng/mL



Cytometric bead array standard curve of MP01014-2, Pentraxin 3 Recombinant Matched Antibody Pair, PBS Only. Capture antibody: 84096-2-PBS. Detection antibody: 84096-1-PBS. Standard: Eg1303. Range: 0.625-40 ng/mL