

For Research Use Only

# PTX3 Recombinant antibody, PBS Only (Capture/Detector)

Catalog Number: 84096-4-PBS



## Basic Information

<b>Catalog Number:</b> 84096-4-PBS	<b>GenBank Accession Number:</b> NM_002852.4	<b>Purification Method:</b> Protein A purification
<b>Size:</b> 100ug , Concentration: 1 mg/ml by Nanodrop;	<b>GeneID (NCBI):</b> 5806	<b>CloneNo.:</b> 241393G1
<b>Source:</b> Rabbit	<b>UNIPROT ID:</b> P26022	
<b>Isotype:</b> IgG	<b>Full Name:</b> pentraxin-related gene, rapidly induced by IL-1 beta	
	<b>Calculated MW:</b> 42 kDa	

## Applications

**Tested Applications:**  
Cytometric bead array, Sandwich ELISA, Indirect ELISA, Sample test

**Species Specificity:**  
human

## Product Information

84096-4-PBS targets PTX3 as part of a matched antibody pair:

MP01014-1: 84096-4-PBS capture and 84096-2-PBS detection (validated in Cytometric bead array)

MP01014-3: 84096-4-PBS capture and 84096-3-PBS detection (validated in Cytometric bead array)

MP01014-4: 84096-2-PBS capture and 84096-4-PBS detection (validated in Sandwich ELISA)

Unconjugated rabbit recombinant monoclonal antibody in PBS only (BSA and azide free) storage buffer at a concentration of 1 mg/mL, ready for conjugation. Created using Proteintech's proprietary in-house recombinant technology. Recombinant production enables unrivalled batch-to-batch consistency, easy scale-up, and future security of supply.

This conjugation ready format makes antibodies ideal for use in many applications including: ELISAs, multiplex assays requiring matched pairs, mass cytometry, and multiplex imaging applications. Antibody use should be optimized by the end user for each application and assay.

## Storage

**Storage:**  
Store at -80°C.

**Storage Buffer:**  
PBS only

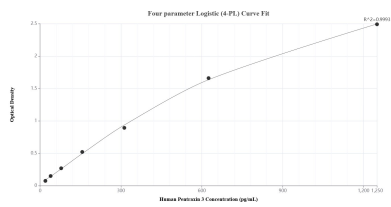
For technical support and original validation data for this product please contact:

T: 1 (888) 4PTGLAB (1-888-478-4522) (toll free in USA), or 1(312) 455-8498 (outside USA)

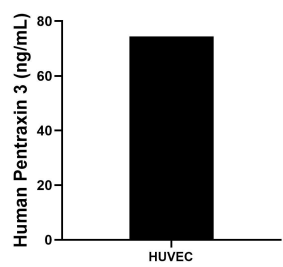
E: [proteintech@ptglab.com](mailto:proteintech@ptglab.com)  
W: [ptglab.com](http://ptglab.com)

This product is exclusively available under Proteintech Group brand and is not available to purchase from any other manufacturer.

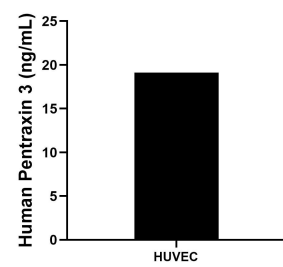
Selected Validation Data



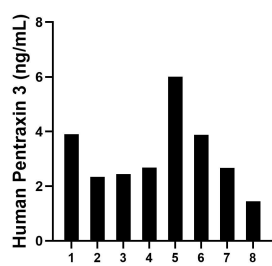
Sandwich ELISA standard curve of MP01014-4, Human Pentraxin 3 Recombinant Matched Antibody Pair - PBS only. 84096-2-PBS was coated to a plate as the capture antibody and incubated with serial dilutions of standard Eg1303. 84096-4-PBS was HRP conjugated as the detection antibody. Range: 19.5-1250 pg/mL.



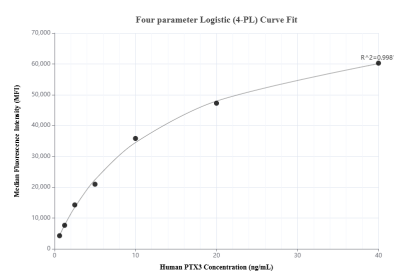
HUVEC were cultured in DMEM supplemented with 10% fetal bovine serum, 2.5 mM L-glutamine, 100 U/mL penicillin, and 100 µg/mL streptomycin sulfate. An aliquot of the cell culture supernate was removed, assayed for human Pentraxin 3, and measured 74.4 ng/mL.



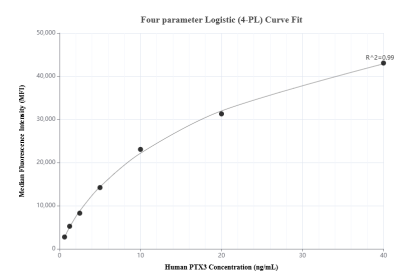
The mean Pentraxin 3 concentration was determined to be 19.1 ng/mL in HUVEC cell extract based on a 1.1 mg/mL extract load.



Serum of eight individual healthy human donors was measured. The Pentraxin 3 concentration of detected samples was determined to be 3.2 ng/mL with a range of 1.5-6.0 ng/mL.



Cytometric bead array standard curve of MP01014-1, Pentraxin 3 Recombinant Matched Antibody Pair, PBS Only. Capture antibody: 84096-4-PBS. Detection antibody: 84096-2-PBS. Standard: Eg1303. Range: 0.625-40 ng/mL.



Cytometric bead array standard curve of MP01014-3, Pentraxin 3 Recombinant Matched Antibody Pair, PBS Only. Capture antibody: 84096-4-PBS. Detection antibody: 84096-3-PBS. Standard: Eg1303. Range: 0.625-40 ng/mL.