

For Research Use Only

RNASEH2B Recombinant antibody

Catalog Number: 84097-6-RR



Basic Information

Catalog Number: 84097-6-RR	GenBank Accession Number: BC036744	Purification Method: Protein A purification
Size: 100ul , Concentration: 1000 µg/ml by Nanodrop;	GeneID (NCBI): 79621	CloneNo.: 241131F1
Source: Rabbit	UNIPROT ID: Q5TBB1	Recommended Dilutions: WB 1:1000-1:6000 IF/ICC 1:200-1:800
Isotype: IgG	Full Name: ribonuclease H2, subunit B	
Immunogen Catalog Number: AG33669	Calculated MW: 331 aa, 37 kDa	
	Observed MW: 35 kDa	

Applications

Tested Applications: WB, IF/ICC, ELISA	Positive Controls:
Species Specificity: human	WB : MCF-7 cells, HeLa cells, Jurkat cells, U-937 cells, THP-1 cells IF/ICC : HeLa cells,

Background Information

Ribonuclease H2 is the major nuclear enzyme degrading cellular RNA/DNA hybrids in eukaryotes and the sole nuclease known to be able to hydrolyze ribonucleotides misincorporated during genomic replication. RNASEH2B and RNASEH2C are the non-catalytic subunits of RNase H2 complex. Defects in RNASEH2B are a cause of Aicardi-Goutieres syndrome type 2 (AGS2), a genetically heterogeneous disease with clinical features as thrombocytopenia, hepatosplenomegaly and elevated hepatic transaminases along with intermittent fever may erroneously suggest an infective process.

Storage

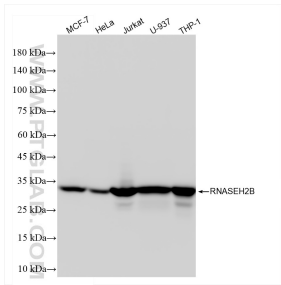
Storage:
Store at -20°C. Stable for one year after shipment.
Storage Buffer:
PBS with 0.02% sodium azide and 50% glycerol pH 7.3.
Aliquoting is unnecessary for -20°C storage

*** 20ul sizes contain 0.1% BSA

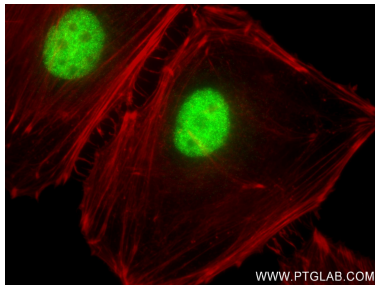
For technical support and original validation data for this product please contact:
T: 1 (888) 4PTGLAB (1-888-478-4522) (toll free in USA), or 1(312) 455-8498 (outside USA)
E: proteintech@ptglab.com
W: ptglab.com

This product is exclusively available under Proteintech Group brand and is not available to purchase from any other manufacturer.

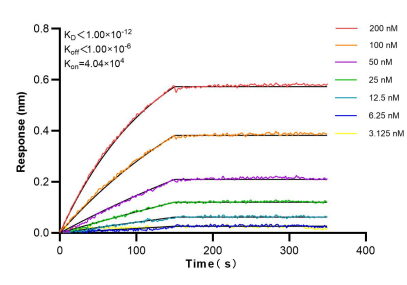
Selected Validation Data



Various lysates were subjected to SDS PAGE followed by western blot with 84097-6-RR (RNASEH2B antibody) at dilution of 1:3000 incubated at room temperature for 1.5 hours.



Immunofluorescent analysis of (4% PFA) fixed HeLa cells using RNASEH2B antibody (84097-6-RR, Clone: 241131F1) at dilution of 1:400 and CoraLite®488-Conjugated Goat Anti-Rabbit IgG(H+L) (SA00013-2), CL594-Phalloidin (red).



Biolayer interferometry (BLI) kinetic assays of 84067-4-RR against Human RNASEH2B were performed. The affinity constant is below 1 pM.