

For Research Use Only

GSG2 Recombinant antibody

Catalog Number: 84098-1-RR



Basic Information

Catalog Number:

84098-1-RR

Size:

100ul, Concentration: 600 µg/ml by Nanodrop;

Source:

Rabbit

Isotype:

IgG

GenBank Accession Number:

NM_031965

GeneID (NCBI):

83903

UNIPROT ID:

Q8TF76

Full Name:

germ cell associated 2 (haspin)

Calculated MW:

88 kDa

Purification Method:

Protein A purification

CloneNo.:

240887E11

Recommended Dilutions:

IF/ICC 1:150-1:600

Applications

Tested Applications:

IF/ICC, FC (Intra), ELISA

Species Specificity:

human

Positive Controls:

IF/ICC : A431 cells,

Background Information

Haploid germ cell-specific nuclear protein kinase (Haspin, alias GSG2) is an atypical eukaryotic protein kinase that was for a long time considered an inactive pseudokinase due to the low degree of structural homology of GSG2 with the 'classical' protein kinases (PMID: 29698892). GSG2 is a serine/threonine kinase that associates with chromosomes and phosphorylates threonine 3 of histone 3 during mitosis (PMID: 32439830).

Storage

Storage:

Store at -20°C. Stable for one year after shipment.

Storage Buffer:

PBS with 0.02% sodium azide and 50% glycerol pH 7.3.

Aliquoting is unnecessary for -20°C storage

*** 20ul sizes contain 0.1% BSA

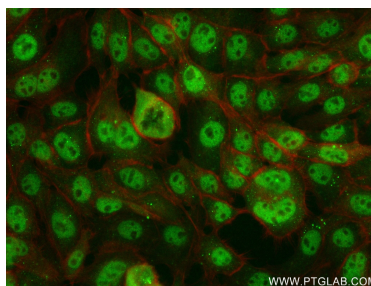
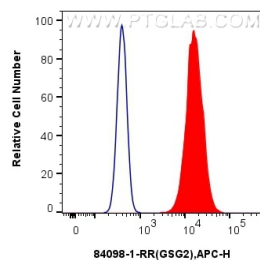
For technical support and original validation data for this product please contact:

T: 1 (888) 4PTGLAB (1-888-478-4522) (toll free in USA), or 1(312) 455-8498 (outside USA)

E: proteintech@ptglab.com
W: ptglab.com

This product is exclusively available under Proteintech Group brand and is not available to purchase from any other manufacturer.

Selected Validation Data



1×10^6 A431 cells were intracellularly stained with 0.25 μ g Gsg2 Recombinant Antibody (84098-1-RR, Clone: 240887E11) and APC-Conjugated AffiniPure Goat Anti-Rabbit IgG(H+L)(red), or 0.25 μ g Isotype Control (blue). Cells were fixed with 4% PFA and permeabilized with 0.1% TritonX-100.

Immunofluorescent analysis of (4% PFA) fixed A431 cells using GSG2 antibody (84098-1-RR, Clone: 240887E11) at dilution of 1:300 and CoraLite®488-Conjugated Goat Anti-Rabbit IgG(H+L) (SA00013-2), CL594-Phalloidin (red).