

For Research Use Only

# DDX24 Recombinant antibody, PBS Only

Catalog Number: 84103-6-PBS



## Basic Information

### Catalog Number:

84103-6-PBS

### Size:

100ug , Concentration: 1 mg/ml by Nanodrop;

### Source:

Rabbit

### Isotype:

IgG

### Immunogen Catalog Number:

AG8407

### GenBank Accession Number:

BC008847

### GeneID (NCBI):

57062

### UNIPROT ID:

Q9GZR7

### Full Name:

DEAD (Asp-Glu-Ala-Asp) box polypeptide 24

### Calculated MW:

96 kDa

### Observed MW:

120 kDa

### Purification Method:

Protein A purification

### CloneNo.:

241145G10

## Applications

### Tested Applications:

WB, IF/ICC, FC (Intra), Indirect ELISA

### Species Specificity:

human

## Background Information

DDX24 is a family member of Asp-Glu-Ala-Asp (DEAD) box containing RNA helicases, and DEAD-box RNA helicases are characterized by a conserved DEAD motif. DDX24 was associated with cancer development, viral infection, and vascular malformation.

## Storage

### Storage:

Store at -80°C.

### Storage Buffer:

PBS Only

For technical support and original validation data for this product please contact:

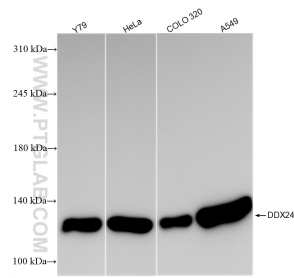
T: 1 (888) 4PTGLAB (1-888-478-4522) (toll free in USA), or 1(312) 455-8498 (outside USA)

E: [proteintech@ptglab.com](mailto:proteintech@ptglab.com)

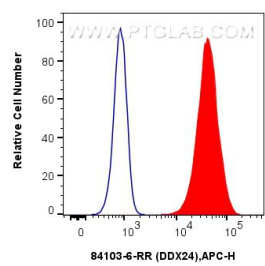
W: [ptglab.com](http://ptglab.com)

This product is exclusively available under Proteintech Group brand and is not available to purchase from any other manufacturer.

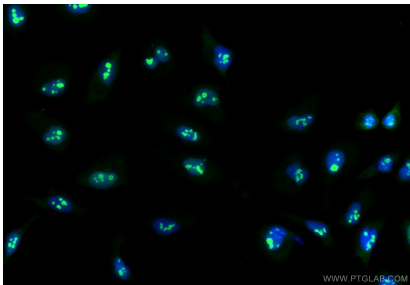
Selected Validation Data



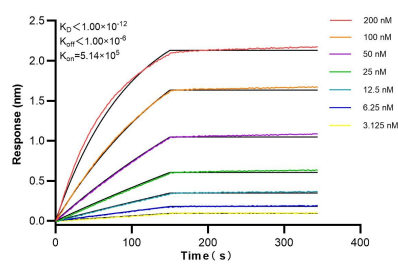
Various lysates were subjected to SDS PAGE followed by western blot with 84103-6-RR (DDX24 antibody) at dilution of 1:10000 incubated at room temperature for 1.5 hours. This data was developed using the same antibody clone with 84103-6-PBS in a different storage buffer formulation.



1x10<sup>6</sup> U-2 OS were intracellularly stained with 0.25 ug DDX24 Recombinant antibody (84103-6-RR, Clone:241145G10) and APC-Conjugated Goat Anti-Rabbit IgG(H+L)(red), or 0.25 ug Isotype Control (blue). Cells were fixed and permeabilized with True-Nuclear Transcription Factor Buffer Set. This data was developed using the same antibody clone with 84103-6-PBS in a different storage buffer formulation.



Immunofluorescent analysis of (4% PFA) fixed HeLa cells using DDX24 antibody (84103-6-RR, Clone: 241145G10 ) at dilution of 1:500 and CoraLite®488-Conjugated Goat Anti-Rabbit IgG(H+L) (SA00013-2). This data was developed using the same antibody clone with 84103-6-PBS in a different storage buffer formulation.



Biolayer interferometry (BLI) kinetic assays of 84103-6-RR against Human DDX24 were performed. The affinity constant is below 1 pM.