

For Research Use Only

DDX24 Recombinant antibody

Catalog Number: 84103-6-RR



Basic Information

Catalog Number:

84103-6-RR

Size:

100ul , Concentration: 1000 µg/ml by Nanodrop;

Source:

Rabbit

Isotype:

IgG

Immunogen Catalog Number:

AG8407

GenBank Accession Number:

BC008847

GeneID (NCBI):

57062

UNIPROT ID:

Q9GZR7

Full Name:

DEAD (Asp-Glu-Ala-Asp) box polypeptide 24

Calculated MW:

96 kDa

Observed MW:

120 kDa

Purification Method:

Protein A purification

CloneNo.:

241145G10

Recommended Dilutions:

WB 1:5000-1:50000

IF/ICC 1:250-1:1000

Applications

Tested Applications:

WB, IF/ICC, FC (Intra), ELISA

Species Specificity:

human

Positive Controls:

WB : Y79 cells, HeLa cells, COLO 320 cells, A549 cells

IF/ICC : HeLa cells,

Background Information

DDX24 is a family member of Asp-Glu-Ala-Asp (DEAD) box containing RNA helicases, and DEAD-box RNA helicases are characterized by a conserved DEAD motif. DDX24 was associated with cancer development, viral infection, and vascular malformation.

Storage

Storage:

Store at -20°C. Stable for one year after shipment.

Storage Buffer:

PBS with 0.02% sodium azide and 50% glycerol pH 7.3.

Aliquoting is unnecessary for -20°C storage

*** 20ul sizes contain 0.1% BSA

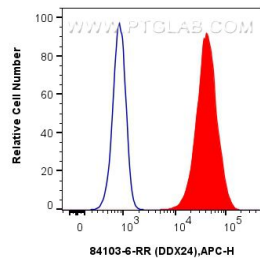
For technical support and original validation data for this product please contact:

T: 1 (888) 4PTGLAB (1-888-478-4522) (toll free in USA), or 1(312) 455-8498 (outside USA)

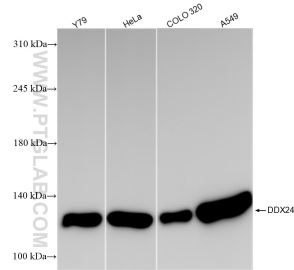
E: proteintech@ptglab.com
W: ptglab.com

This product is exclusively available under Proteintech Group brand and is not available to purchase from any other manufacturer.

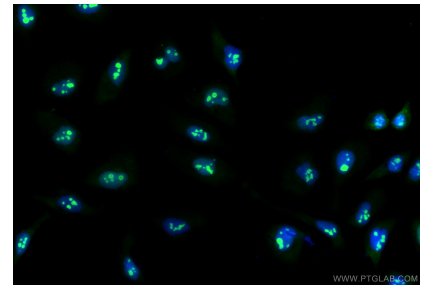
Selected Validation Data



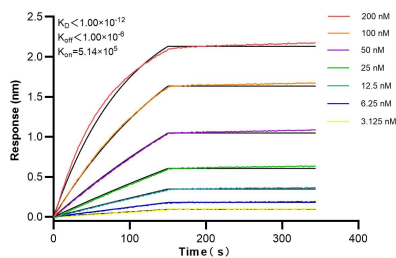
1x10⁶ U-2 OS were intracellularly stained with 0.25 ug DDX24 Recombinant antibody (84103-6-RR, Clone:241145G10) and APC-Conjugated Goat Anti-Rabbit IgG(H+L)(red), or 0.25 ug Isotype Control (blue). Cells were fixed and permeabilized with True-Nuclear Transcription Factor Buffer Set.



Various lysates were subjected to SDS PAGE followed by western blot with 84103-6-RR (DDX24 antibody) at dilution of 1:10000 incubated at room temperature for 1.5 hours.



Immunofluorescent analysis of (4% PFA) fixed HeLa cells using DDX24 antibody (84103-6-RR, Clone: 241145G10) at dilution of 1:500 and CoraLite®488-Conjugated Goat Anti-Rabbit IgG(H+L) (SA00013-2).



Biolayer interferometry (BLI) kinetic assays of 84103-6-RR against Human DDX24 were performed. The affinity constant is below 1 pM.