

For Research Use Only

RBM10 Recombinant antibody, PBS Only (Detector)

Catalog Number: 84104-2-PBS

Featured Product



Basic Information

Catalog Number:

84104-2-PBS

Size:

100ug, Concentration: 1 mg/ml by Nanodrop;

Source:

Rabbit

Isotype:

IgG

Immunogen Catalog Number:

AG5788

GenBank Accession Number:

BC024153

GeneID (NCBI):

8241

UNIPROT ID:

P98175

Full Name:

RNA binding motif protein 10

Calculated MW:

104 kDa

Observed MW:

100-120 kDa

Purification Method:

Protein A purification

CloneNo.:

241151D7

Applications

Tested Applications:

WB, IHC, IF/ICC, FC (Intra), Cytometric bead array, Indirect ELISA

Species Specificity:

human, rat

Product Information

84104-2-PBS targets RBM10 as part of a matched antibody pair:

MP01041-2: 84104-1-PBS capture and 84104-2-PBS detection (validated in Cytometric bead array)

Unconjugated rabbit recombinant monoclonal antibody in PBS only (BSA and azide free) storage buffer at a concentration of 1 mg/mL, ready for conjugation. Created using Proteintech's proprietary in-house recombinant technology. Recombinant production enables unrivalled batch-to-batch consistency, easy scale-up, and future security of supply.

This conjugation ready format makes antibodies ideal for use in many applications including: ELISAs, multiplex assays requiring matched pairs, mass cytometry, and multiplex imaging applications. Antibody use should be optimized by the end user for each application and assay.

Background Information

RBM10, also named as RNA-binding protein 10, is a 930 amino acid protein, which is in the extranuclear nucleoplasm constitutes hundreds of nuclear domains, which dynamically change their structures in a reversible manner. RBM10 may be involved in post-transcriptional processing, most probably in mRNA splicing. RBM10 has some isoforms with MV 100-130 kDa (PMID: 25889998 and PMID: 18315527).

Storage

Storage:

Store at -80°C.

Storage Buffer:

PBS only, pH7.3

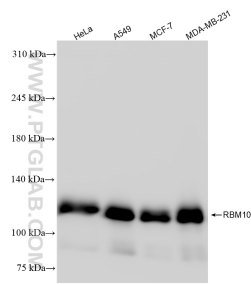
For technical support and original validation data for this product please contact:

T: 1 (888) 4PTGLAB (1-888-478-4522) (toll free in USA), or 1(312) 455-8498 (outside USA)

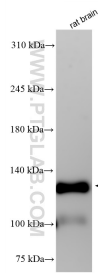
E: proteintech@ptglab.com
W: ptglab.com

This product is exclusively available under Proteintech Group brand and is not available to purchase from any other manufacturer.

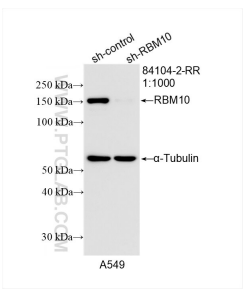
Selected Validation Data



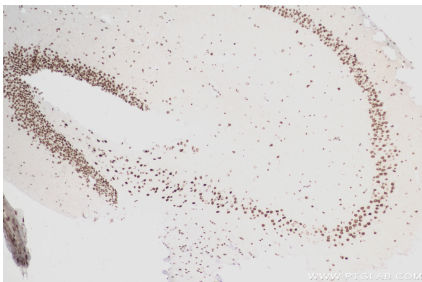
Various lysates were subjected to SDS PAGE followed by western blot with 84104-2-RR (RBM10 antibody) at dilution of 1:4000 incubated at room temperature for 1.5 hours. This data was developed using the same antibody clone with 84104-2-PBS in a different storage buffer formulation.



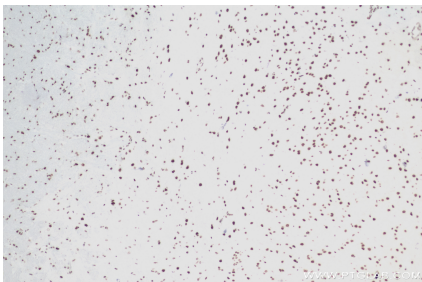
rat brain tissue were subjected to SDS PAGE followed by western blot with 84104-2-RR (RBM10 antibody) at dilution of 1:4000 incubated at room temperature for 1.5 hours. This data was developed using the same antibody clone with 84104-2-PBS in a different storage buffer formulation.



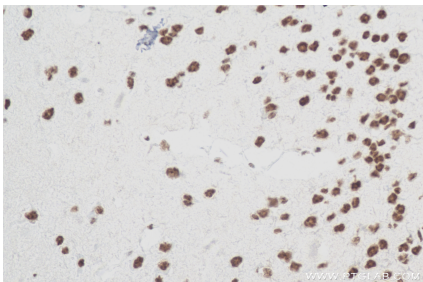
WB result of RBM10 antibody (84104-2-RR; 1:1000; incubated at room temperature for 1.5 hours) with sh-Control and sh-RBM10 transfected A549 cells. This data was developed using the same antibody clone with 84104-2-PBS in a different storage buffer formulation.



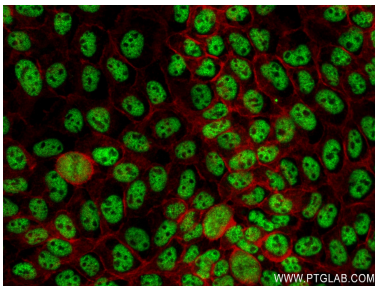
Immunohistochemical analysis of paraffin-embedded mouse brain tissue slide using 84104-2-RR (RBM10 antibody) at dilution of 1:200 (under 10x lens). Heat mediated antigen retrieval with Tris-EDTA buffer (pH 9.0). This data was developed using the same antibody clone with 84104-2-PBS in a different storage buffer formulation.



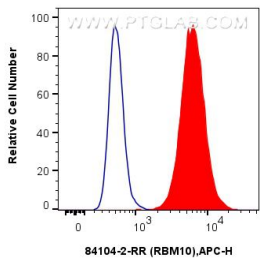
Immunohistochemical analysis of paraffin-embedded mouse brain tissue slide using 84104-2-RR (RBM10 antibody) at dilution of 1:400 (under 10x lens). Heat mediated antigen retrieval with Tris-EDTA buffer (pH 9.0). This data was developed using the same antibody clone with 84104-2-PBS in a different storage buffer formulation.



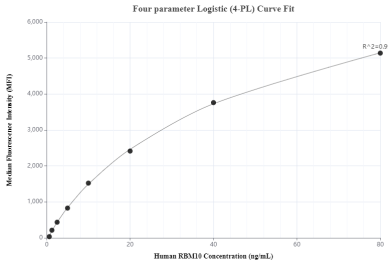
Immunohistochemical analysis of paraffin-embedded mouse brain tissue slide using 84104-2-RR (RBM10 antibody) at dilution of 1:400 (under 40x lens). Heat mediated antigen retrieval with Tris-EDTA buffer (pH 9.0). This data was developed using the same antibody clone with 84104-2-PBS in a different storage buffer formulation.



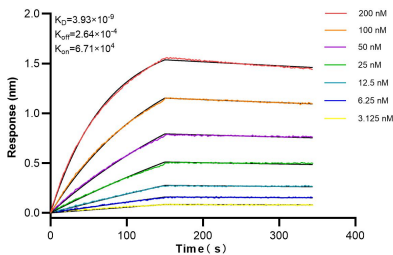
Immunofluorescent analysis of (4% PFA) fixed A431 cells using RBM10 antibody (84104-2-RR, Clone: 241151D7) at dilution of 1:400 and CoraLite®488-Conjugated Goat Anti-Rabbit IgG(H+L) (SA00013-2), CL594-Phalloidin (red). This data was developed using the same antibody clone with 84104-2-PBS in a different storage buffer formulation.



1x10⁶ A431 cells were intracellularly stained with 0.25 ug RBM10 Recombinant antibody (84104-2-RR, Clone:241151D7) and APC-Conjugated Goat Anti-Rabbit IgG(H+L)(red), or 0.25 ug Isotype Control (blue). Cells were fixed and permeabilized with True-Nuclear Transcription Factor Buffer Set. This data was developed using the same antibody clone with 84104-2-PBS in a different storage buffer formulation.



Cytometric bead array standard curve of MP01041-2, RBM10 Recombinant Matched Antibody Pair, PBS Only. Capture antibody: 84104-1-PBS. Detection antibody: 84104-2-PBS. Standard: Ag5788. Range: 0.625-80 ng/mL.



Biolayer interferometry (BLI) kinetic assays of 84104-2-RR against Human RBM10 were performed. The affinity constant is 3.93 nM.