

For Research Use Only

CCDC134 Recombinant antibody, PBS Only (Detector)

Catalog Number: 84106-3-PBS

Featured Product



Basic Information

Catalog Number:

84106-3-PBS

Size:

100ug, Concentration: 1 mg/ml by Nanodrop;

Source:

Rabbit

Isotype:

IgG

Immunogen Catalog Number:

AG21990

GenBank Accession Number:

BC017693

GeneID (NCBI):

79879

UNIPROT ID:

Q9H6E4

Full Name:

coiled-coil domain containing 134

Calculated MW:

229 aa, 27 kDa

Observed MW:

25-27 kDa

Purification Method:

Protein A purification

CloneNo.:

241212F11

Applications

Tested Applications:

WB, FC (Intra), Cytometric bead array, Indirect ELISA

Species Specificity:

human

Product Information

84106-3-PBS targets CCDC134 as part of a matched antibody pair:

MP01057-1: 84106-1-PBS capture and 84106-3-PBS detection (validated in Cytometric bead array)

Unconjugated rabbit recombinant monoclonal antibody in PBS only (BSA and azide free) storage buffer at a concentration of 1 mg/mL, ready for conjugation. Created using Proteintech's proprietary in-house recombinant technology. Recombinant production enables unrivalled batch-to-batch consistency, easy scale-up, and future security of supply.

This conjugation ready format makes antibodies ideal for use in many applications including: ELISAs, multiplex assays requiring matched pairs, mass cytometry, and multiplex imaging applications. Antibody use should be optimized by the end user for each application and assay.

Storage

Storage:

Store at -80°C.

Storage Buffer:

PBS Only

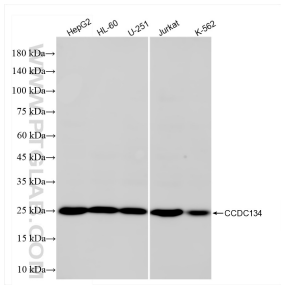
For technical support and original validation data for this product please contact:

T: 1 (888) 4PTGLAB (1-888-478-4522) (toll free in USA), or 1(312) 455-8498 (outside USA)

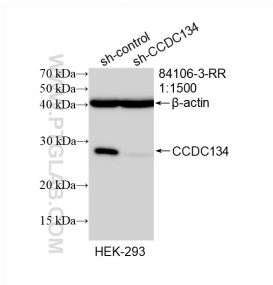
E: proteintech@ptglab.com
W: ptglab.com

This product is exclusively available under Proteintech Group brand and is not available to purchase from any other manufacturer.

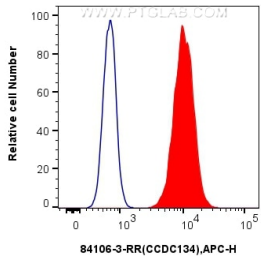
Selected Validation Data



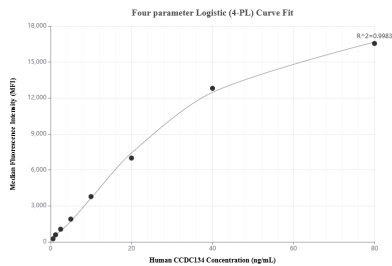
Various lysates were subjected to SDS PAGE followed by western blot with 84106-3-RR (CCDC134 antibody) at dilution of 1:5000 incubated at room temperature for 1.5 hours. This data was developed using the same antibody clone with 84106-3-PBS in a different storage buffer formulation.



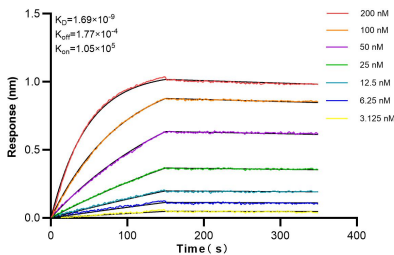
WB result of CCDC134 antibody (84106-3-RR; 1:1500; incubated at room temperature for 1.5 hours) with sh-Control and sh-CCDC134 transfected HEK-293 cells. This data was developed using the same antibody clone with 84106-3-PBS in a different storage buffer formulation.



1x10⁶ U2OS cells were intracellularly stained with 0.25 ug CCDC134 Recombinant antibody (84106-3-RR, Clone:241212F11) and APC-Conjugated Goat Anti-Rabbit IgG(H+L)(red), or 0.25 ug Isotype Control (blue). Cells were fixed with 4% PFA and permeabilized with Flow Cytometry Perm Buffer (PF00011-C). This data was developed using the same antibody clone with 84106-3-PBS in a different storage buffer formulation.



Cytometric bead array standard curve of MP01057-1, CCDC134 Recombinant Matched Antibody Pair, PBS Only. Capture antibody: 84106-1-PBS. Detection antibody: 84106-3-PBS. Standard: Ag21990. Range: 0.625-80 ng/mL.



Bi-layer interferometry (BLI) kinetic assays of 84106-3-RR against Human CCDC134 were performed. The affinity constant is 1.69 nM.