

For Research Use Only

PROS1 Recombinant antibody

Catalog Number: 84107-2-RR

Featured Product



Basic Information

Catalog Number:

84107-2-RR

Size:

100ul, Concentration: 1000 ug/ml by Nanodrop;

Source:

Rabbit

Isotype:

IgG

Immunogen Catalog Number:

AG10539

GenBank Accession Number:

BC015801

GeneID (NCBI):

5627

UNIPROT ID:

P07225

Full Name:

protein S (alpha)

Calculated MW:

75 kDa

Observed MW:

75 kDa

Purification Method:

Protein A purification

CloneNo.:

241241E5

Recommended Dilutions:

WB 1:5000-1:50000

IHC 1:200-1:800

IF/ICC 1:125-1:500

Applications

Tested Applications:

WB, IHC, IF/ICC, FC (Intra), ELISA

Species Specificity:

human

Note-IHC: suggested antigen retrieval with TE buffer pH 9.0; (*) Alternatively, antigen retrieval may be performed with citrate buffer pH 6.0

Positive Controls:

WB : DU 145 cells, PC-3 cells, HuH-7 cells

IHC : mouse brain tissue,

IF/ICC : HepG2 cells,

Background Information

PROS1, also named as Vitamin K-dependent protein S, is a 676 amino acid protein, which contains 4 EGF-like domains, contains one Gla (gamma-carboxy-glutamate) domain and contains 2 laminin G-like domains. PROS1 as a secreted protein platelets alpha granules is expressed in plasma. PROS1 is a cofactor to activated protein C in the degradation of coagulation factors Va and VIIIa and helps to prevent coagulation and stimulating fibrinolysis.

Storage

Storage:

Store at -20°C. Stable for one year after shipment.

Storage Buffer:

PBS with 0.02% sodium azide and 50% glycerol pH 7.3.

Aliquoting is unnecessary for -20°C storage

*** 20ul sizes contain 0.1% BSA

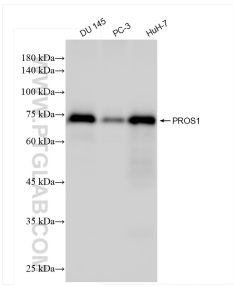
For technical support and original validation data for this product please contact:

T: 1 (888) 4PTGLAB (1-888-478-4522) (toll free in USA), or 1(312) 455-8498 (outside USA)

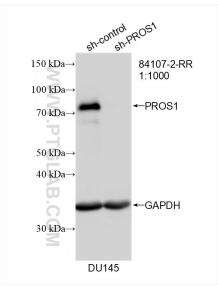
E: proteintech@ptglab.com
W: ptglab.com

This product is exclusively available under Proteintech Group brand and is not available to purchase from any other manufacturer.

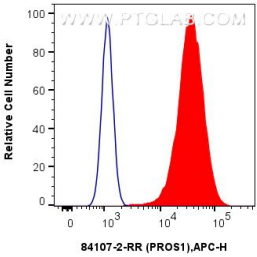
Selected Validation Data



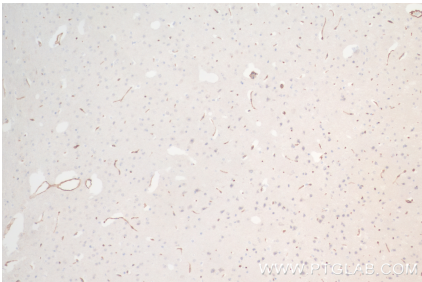
Various lysates were subjected to SDS PAGE followed by western blot with 84107-2-RR (PROS1 antibody) at dilution of 1:10000 incubated at room temperature for 1.5 hours.



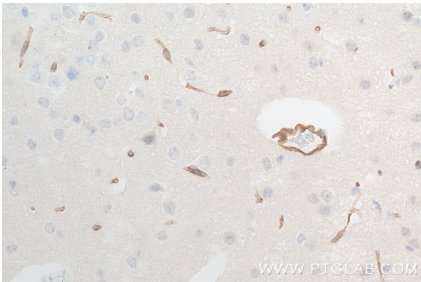
WB result of PROS1 antibody (84107-2-RR; 1:1000; incubated at room temperature for 1.5 hours) with sh-Control and sh-PROS1 transfected DU 145 cells.



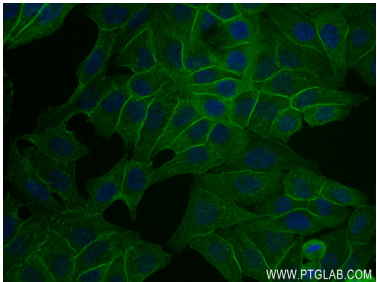
1x10⁶ A549 cells were intracellularly stained with 0.25 ug PROS1 Recombinant antibody (84107-2-RR, Clone:241241E5) and APC-Conjugated Goat Anti-Rabbit IgG(H+L)(red), or 0.25 ug Isotype Control (blue). Cells were fixed with 4% PFA and permeabilized with Flow Cytometry Perm Buffer (PF00011-C).



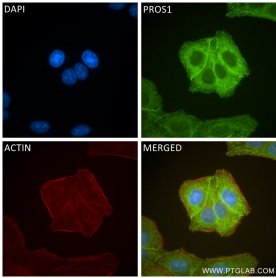
Immunohistochemical analysis of paraffin-embedded mouse brain tissue slide using 84107-2-RR (PROS1 antibody) at dilution of 1:400 (under 10x lens). Heat mediated antigen retrieval with Tris-EDTA buffer (pH 9.0).



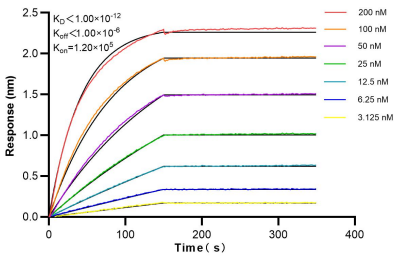
Immunohistochemical analysis of paraffin-embedded mouse brain tissue slide using 84107-2-RR (PROS1 antibody) at dilution of 1:400 (under 40x lens). Heat mediated antigen retrieval with Tris-EDTA buffer (pH 9.0).



Immunofluorescent analysis of (4% PFA) fixed HepG2 cells using PROS1 antibody (84107-2-RR, Clone: 241241E5) at dilution of 1:250 and CoraLite@488-Conjugated Goat Anti-Rabbit IgG(H+L) (SA00013-2).



Immunofluorescent analysis of (-20°C Ethanol) fixed HepG2 cells using PROS1 antibody (84107-2-RR, Clone: 241241E5) at dilution of 1:400 and CoraLite@488-Conjugated Goat Anti-Rabbit IgG(H+L) (SA00013-2), CL594-Phalloidin (red).



Biolayer interferometry (BLI) kinetic assays of 84107-2-RR against Human PROS1 were performed. The affinity constant is below 1 pM.