

For Research Use Only

CD2 Recombinant antibody, PBS Only (Capture)

Catalog Number: 84108-5-PBS



Basic Information

Catalog Number: 84108-5-PBS	GenBank Accession Number: BC033583	Purification Method: Protein A purification
Size: 100ug , Concentration: 1 mg/ml by Nanodrop;	GeneID (NCBI): 914	CloneNo.: 241222B8
Source: Rabbit	ENSEMBL Gene ID: ENSG00000116824	
Isotype: IgG	UNIPROT ID: P06729	
Immunogen Catalog Number: EG1271	Full Name: CD2 molecule	
	Calculated MW: 351 aa, 39 kDa	
	Observed MW: 50 kDa	

Applications

Tested Applications:
WB, IF/ICC, Sandwich ELISA, Indirect ELISA, Sample test

Species Specificity:
human

Product Information

84108-5-PBS targets CD2 as part of a matched antibody pair.

MP01045-4: 84108-5-PBS capture and 84108-3-PBS detection (validated in Sandwich ELISA)

Unconjugated rabbit recombinant monoclonal antibody in PBS only (BSA and azide free) storage buffer at a concentration of 1 mg/mL, ready for conjugation. Created using Proteintech's proprietary in-house recombinant technology. Recombinant production enables unrivalled batch-to-batch consistency, easy scale-up, and future security of supply.

This conjugation ready format makes antibodies ideal for use in many applications including: ELISAs, multiplex assays requiring matched pairs, mass cytometry, and multiplex imaging applications. Antibody use should be optimized by the end user for each application and assay.

Background Information

CD2 is a cell surface glycoprotein present on a majority of thymocytes, all mature T cells and subset of NK cells but not on B lymphocytes. It is a pan T-cell marker. CD2 interacts with lymphocyte function-associated antigen (LFA-3/CD58) and CD48/BCM1 to mediate adhesion between T-cells and other cell types. CD2 is implicated in the triggering of T-cells, the cytoplasmic domain is implicated in the signaling function.

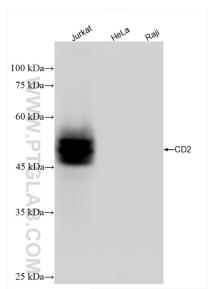
Storage

Storage:
Store at -80°C.
Storage Buffer:
PBS only, pH7.3

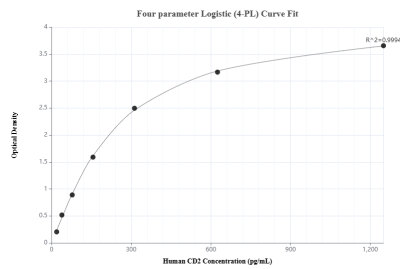
For technical support and original validation data for this product please contact:
T: 1 (888) 4PTGLAB (1-888-478-4522) (toll free in USA), or 1(312) 455-8498 (outside USA)
E: proteintech@ptglab.com
W: ptglab.com

This product is exclusively available under Proteintech Group brand and is not available to purchase from any other manufacturer.

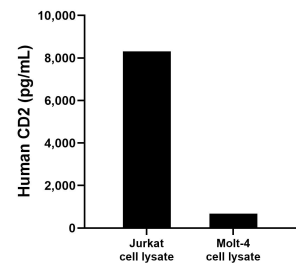
Selected Validation Data



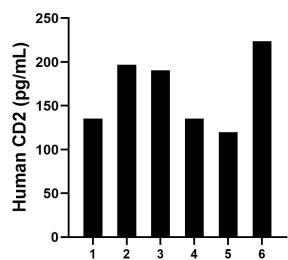
Various lysates were subjected to SDS PAGE followed by western blot with 84108-5-RR (CD2 antibody) at dilution of 1:10000 incubated at room temperature for 1.5 hours. This data was developed using the same antibody clone with 84108-5-PBS in a different storage buffer formulation.



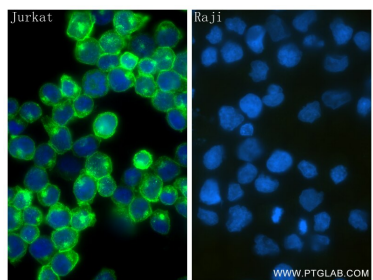
Sandwich ELISA standard curve of MP01045-4, Human CD2 Recombinant Matched Antibody Pair - PBS only. 84108-5-PBS was coated to a plate as the capture antibody and incubated with serial dilutions of standard Eg1271. 84108-3-PBS was HRP conjugated as the detection antibody. Range: 19.5-1250 pg/mL



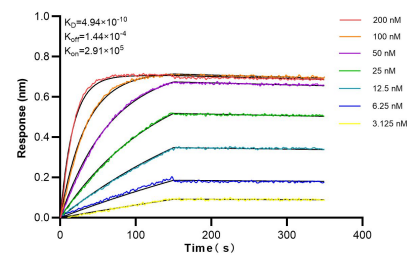
Jurkat and Molt-4 cell lysate were measured. The human CD2 concentration of detected samples was determined to be 8,318.1 pg/mL (based on a 1.0 mg/mL extract load) in Jurkat cell lysate and 679.3 pg/mL (based on a 4.5 mg/mL extract load) in Molt-4 cell lysate.



Serum of six individual healthy human donors was measured. The human CD2 concentration of detected samples was determined to be 167.0 pg/mL with a range of 119.9 - 223.9 pg/mL.



Immunofluorescent analysis of (4% PFA) fixed Jurkat (positive) Raji (negative) cells using CD2 antibody (84108-5-RR, Clone: 241222B8) at dilution of 1:500 and Coralite@488-Conjugated Goat Anti-Rabbit IgG(H+L) (SA00013-2). This data was developed using the same antibody clone with 84108-5-PBS in a different storage buffer formulation.



Bi-layer interferometry (BLI) kinetic assays of 84108-5-RR against Human CD2 were performed. The affinity constant is 0.494 nM.