

For Research Use Only

SAMD9L Recombinant antibody, PBS Only (Capture)

Catalog Number: 84109-1-PBS



Basic Information

Catalog Number: 84109-1-PBS	GenBank Accession Number: BC127118	Purification Method: Protein A purification
Size: 100ug , Concentration: 1 mg/ml by Nanodrop;	GeneID (NCBI): 219285	CloneNo.: 241250A2
Source: Rabbit	UNIPROT ID: Q8IVG5	
Isotype: IgG	Full Name: sterile alpha motif domain containing 9-like	
Immunogen Catalog Number: AG18541	Calculated MW: 1584 aa, 185 kDa	
	Observed MW: 160-180 kDa	

Applications

Tested Applications:
WB, Cytometric bead array, Indirect ELISA

Species Specificity:
human, mouse

Product Information

84109-1-PBS targets SAMD9L as part of a matched antibody pair:

MP01024-2: 84109-1-PBS capture and 84109-2-PBS detection (validated in Cytometric bead array)

Unconjugated rabbit recombinant monoclonal antibody in PBS only (BSA and azide free) storage buffer at a concentration of 1 mg/mL, ready for conjugation. Created using Proteintech's proprietary in-house recombinant technology. Recombinant production enables unrivalled batch-to-batch consistency, easy scale-up, and future security of supply.

This conjugation ready format makes antibodies ideal for use in many applications including: ELISAs, multiplex assays requiring matched pairs, mass cytometry, and multiplex imaging applications. Antibody use should be optimized by the end user for each application and assay.

Background Information

Sterile alpha motif domain-containing protein 9-like (SAMD9L), also named C7orf6, DRIF2, KIAA2005, and UEF, is a cytoplasmic protein that acts as a tumor suppressor but also plays a key role in cell proliferation and the innate immune response to viral infection. SAMD9L protein is an endosome fusion facilitator that causes myeloid malignancies in mice similar to human diseases with monosomy 7. The SAMD9L protein also appears to play an important role in the brain, particularly the part of the brain that coordinates movement (the cerebellum). SAMD9L has two isoforms with MW 185 kDa and 47 kDa.

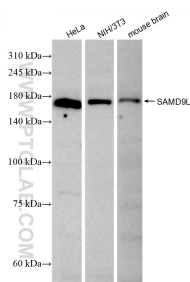
Storage

Storage:
Store at -80°C.
Storage Buffer:
PBS Only

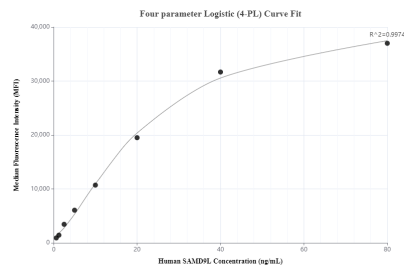
For technical support and original validation data for this product please contact:
T: 1 (888) 4PTGLAB (1-888-478-4522) (toll free in USA), or 1(312) 455-8498 (outside USA)
E: proteintech@ptglab.com
W: ptglab.com

This product is exclusively available under Proteintech Group brand and is not available to purchase from any other manufacturer.

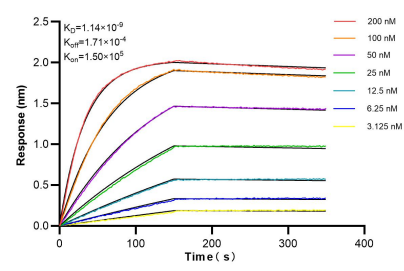
Selected Validation Data



Various lysates were subjected to SDS PAGE followed by western blot with 84109-1-RR (SAMD9L antibody) at dilution of 1:5000 incubated at room temperature for 1.5 hours. This data was developed using the same antibody clone with 84109-1-PBS in a different storage buffer formulation.



Cytometric bead array standard curve of MP01024-2, SAMD9L Recombinant Matched Antibody Pair, PBS Only. Capture antibody: 84109-1-PBS. Detection antibody: 84109-2-PBS. Standard: Ag18541. Range: 0.625-80 ng/mL.



Biolayer interferometry (BLI) kinetic assays of 84109-1-RR against Human SAMD9L were performed. The affinity constant is 1.14 nM.