

For Research Use Only

SAMD9L Recombinant antibody

Catalog Number: 84109-1-RR



Basic Information

Catalog Number: 84109-1-RR	GenBank Accession Number: BC127118	Purification Method: Protein A purification
Size: 100ul , Concentration: 1000 µg/ml by Nanodrop;	GeneID (NCBI): 219285	CloneNo.: 241250A2
Source: Rabbit	UNIPROT ID: Q8IVG5	Recommended Dilutions: WB 1:2000-1:10000
Isotype: IgG	Full Name: sterile alpha motif domain containing 9-like	
Immunogen Catalog Number: AG18541	Calculated MW: 1584 aa, 185 kDa	
	Observed MW: 160-180 kDa	

Applications

Tested Applications: WB, ELISA	Positive Controls: WB : mouse brain tissue, NIH/3T3 cells
Species Specificity: human, mouse	

Background Information

Sterile alpha motif domain-containing protein 9-like(SAMD9L), also named C7orf6, DRIF2, KIAA2005, and UEF, is a cytoplasmic protein that acts as a tumor suppressor but also plays a key role in cell proliferation and the innate immune response to viral infection. SAMD9L protein is an endosome fusion facilitator that causes myeloid malignancies in mice similar to human diseases with monosomy 7. The SAMD9L protein also appears to play an important role in the brain, particularly the part of the brain that coordinates movement (the cerebellum). SAMD9L has two isoforms with MW 185 kDa and 47 kDa.

Storage

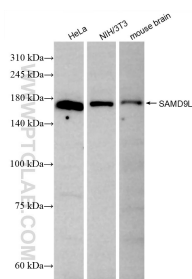
Storage:
Store at -20°C. Stable for one year after shipment.
Storage Buffer:
PBS with 0.02% sodium azide and 50% glycerol pH 7.3.
Aliquoting is unnecessary for -20°C storage

*** 20ul sizes contain 0.1% BSA

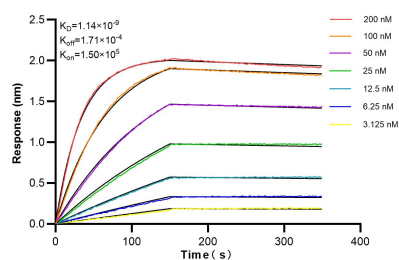
For technical support and original validation data for this product please contact:
T: 1 (888) 4PTGLAB (1-888-478-4522) (toll free in USA), or 1(312) 455-8498 (outside USA)
E: proteintech@ptglab.com
W: ptglab.com

This product is exclusively available under Proteintech Group brand and is not available to purchase from any other manufacturer.

Selected Validation Data



Various lysates were subjected to SDS PAGE followed by western blot with 84109-1-RR (SAMD9L antibody) at dilution of 1:5000 incubated at room temperature for 1.5 hours.



Biolayer interferometry (BLI) kinetic assays of 84109-1-RR against Human SAMD9L were performed. The affinity constant is 1.14 nM.