

For Research Use Only

SAMD9L Recombinant antibody, PBS Only (Capture/Detector)

Catalog Number: 84109-5-PBS



Basic Information

Catalog Number: 84109-5-PBS	GenBank Accession Number: BC127118	Purification Method: Protein A purification
Size: 100ug , Concentration: 1 mg/ml by Nanodrop;	GeneID (NCBI): 219285	CloneNo.: 241250H6
Source: Rabbit	UNIPROT ID: Q8IVG5	
Isotype: IgG	Full Name: sterile alpha motif domain containing 9-like	
Immunogen Catalog Number: AG18541	Calculated MW: 1584 aa, 185 kDa	

Applications

Tested Applications:
Cytometric bead array, Sandwich ELISA, Indirect ELISA, Sample test

Species Specificity:
human

Product Information

84109-5-PBS targets SAMD9L as part of a matched antibody pair:

MP01024-3: 84109-3-PBS capture and 84109-5-PBS detection (validated in Cytometric bead array)

MP01024-4: 84109-5-PBS capture and 84109-2-PBS detection (validated in Sandwich ELISA)

Unconjugated rabbit recombinant monoclonal antibody in PBS only (BSA and azide free) storage buffer at a concentration of 1 mg/mL, ready for conjugation. Created using Proteintech's proprietary in-house recombinant technology. Recombinant production enables unrivalled batch-to-batch consistency, easy scale-up, and future security of supply.

This conjugation ready format makes antibodies ideal for use in many applications including: ELISAs, multiplex assays requiring matched pairs, mass cytometry, and multiplex imaging applications. Antibody use should be optimized by the end user for each application and assay.

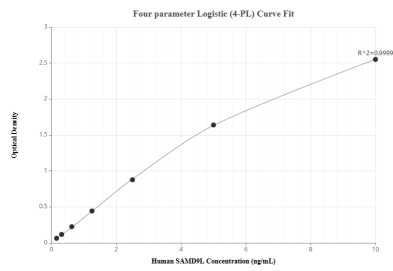
Storage

Storage:
Store at -80°C.
Storage Buffer:
PBS Only

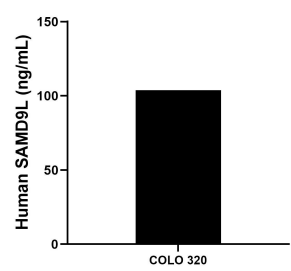
For technical support and original validation data for this product please contact:
T: 1 (888) 4PTGLAB (1-888-478-4522) (toll free in USA), or 1(312) 455-8498 (outside USA)
E: proteintech@ptglab.com
W: ptglab.com

This product is exclusively available under Proteintech Group brand and is not available to purchase from any other manufacturer.

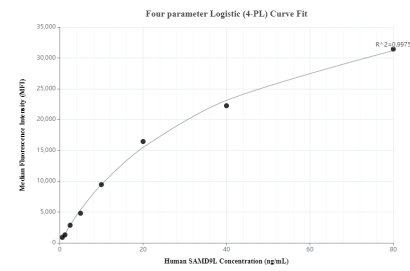
Selected Validation Data



Sandwich ELISA standard curve of MP01024-4, Human SAMD9L Recombinant Matched Antibody Pair - PBS only. 84109-5-PBS was coated to a plate as the capture antibody and incubated with serial dilutions of standard Ag18541. 84109-2-PBS was HRP conjugated as the detection antibody. Range: 0.156-10 ng/mL



The mean SAMD9L concentration was determined to be 103.86 ng/mL in COLO 320 cell extract based on a 2.0 mg/mL extract load.



Cytometric bead array standard curve of MP01024-3, SAMD9L Recombinant Matched Antibody Pair, PBS Only. Capture antibody: 84109-3-PBS. Detection antibody: 84109-5-PBS. Standard: Ag18541. Range: 0.625-80 ng/mL