

For Research Use Only

PPID Recombinant antibody, PBS Only (Detector)

Catalog Number: 84115-2-PBS



Basic Information

Catalog Number: 84115-2-PBS	GenBank Accession Number: BC030707	Purification Method: Protein A purification
Size: 100ug , Concentration: 1 mg/ml by Nanodrop;	GeneID (NCBI): 5481	CloneNo.: 241361B5
Source: Rabbit	UNIPROT ID: Q08752	
Isotype: IgG	Full Name: peptidylprolyl isomerase D	
Immunogen Catalog Number: AG3409	Calculated MW: 370 aa, 41 kDa	

Applications

Tested Applications:
Cytometric bead array, Sandwich ELISA, Indirect ELISA, Sample test

Species Specificity:
human

Product Information

84115-2-PBS targets PPID as part of a matched antibody pair:

MP01018-2: 84115-1-PBS capture and 84115-2-PBS detection (validated in Cytometric bead array)

MP01018-4: 84115-7-PBS capture and 84115-2-PBS detection (validated in Sandwich ELISA)

Unconjugated rabbit recombinant monoclonal antibody in PBS only (BSA and azide free) storage buffer at a concentration of 1 mg/mL, ready for conjugation. Created using Proteintech's proprietary in-house recombinant technology. Recombinant production enables unrivalled batch-to-batch consistency, easy scale-up, and future security of supply.

This conjugation ready format makes antibodies ideal for use in many applications including: ELISAs, multiplex assays requiring matched pairs, mass cytometry, and multiplex imaging applications. Antibody use should be optimized by the end user for each application and assay.

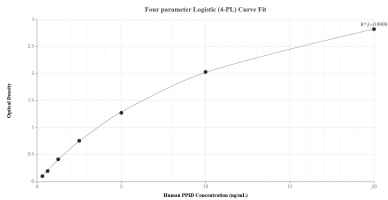
Storage

Storage:
Store at -80°C.
Storage Buffer:
PBS only, pH7.3

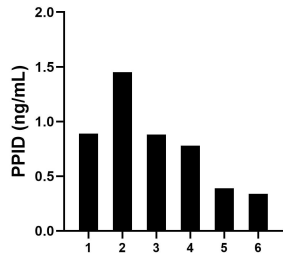
For technical support and original validation data for this product please contact:
T: 1 (888) 4PTGLAB (1-888-478-4522) (toll free in USA), or 1(312) 455-8498 (outside USA)
E: proteintech@ptglab.com
W: ptglab.com

This product is exclusively available under Proteintech Group brand and is not available to purchase from any other manufacturer.

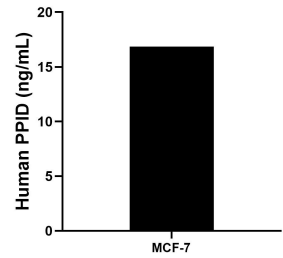
Selected Validation Data



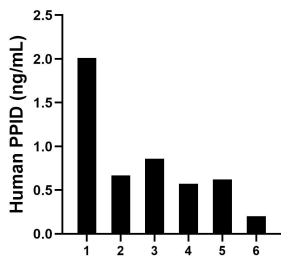
Sandwich ELISA standard curve of MP01018-4, Human PPID Recombinant Matched Antibody Pair - PBS only. 84115-7-PBS was coated to a plate as the capture antibody and incubated with serial dilutions of standard Ag3409. 84115-2-PBS was HRP conjugated as the detection antibody. Range: 0.313-20 ng/mL



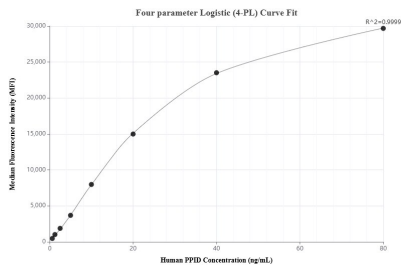
Serum of six rats was measured. The PPID concentration of detected samples was determined to be 0.79 ng/mL with a range of 0.34-1.45 ng/mL



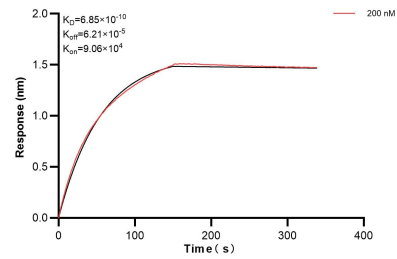
The mean PPID concentration was determined to be 16.84 ng/mL in MCF-7 cell extract based on a 1.20 mg/mL extract load.



Serum of six individual healthy human donors was measured. The PPID concentration of detected samples was determined to be 0.82 ng/mL with a range of 0.20-2.01 ng/mL



Cytometric bead array standard curve of MP01018-2, PPID Recombinant Matched Antibody Pair, PBS Only. Capture antibody: 84115-1-PBS. Detection antibody: 84115-2-PBS. Standard: Ag3409. Range: 0.625-80 ng/mL



Biolayer interferometry (BLI) kinetic assay of 84115-2-PBS against Human PPID was performed. The affinity constant is 0.685 nM.