

For Research Use Only

# PPID Recombinant antibody, PBS Only (Capture)

Catalog Number: 84115-7-PBS



## Basic Information

Catalog Number:	84115-7-PBS	GenBank Accession Number:	BC030707	Purification Method:	Protein A purification
Size:	100ug , Concentration: 1 mg/ml by Nanodrop;	GeneID (NCBI):	5481	CloneNo.:	241361B10
Source:	Rabbit	UNIPROT ID:	Q08752		
Isotype:	IgG	Full Name:	peptidylprolyl isomerase D		
Immunogen Catalog Number:	AG3409	Calculated MW:	370 aa, 41 kDa		

## Applications

**Tested Applications:**  
Sandwich ELISA, Indirect ELISA, Sample test

**Species Specificity:**  
human

## Product Information

84115-7-PBS targets PPID as part of a matched antibody pair:

MP01018-4: 84115-7-PBS capture and 84115-2-PBS detection (validated in Sandwich ELISA)

Unconjugated rabbit recombinant monoclonal antibody in PBS only (BSA and azide free) storage buffer at a concentration of 1 mg/mL, ready for conjugation. Created using Proteintech's proprietary in-house recombinant technology. Recombinant production enables unrivalled batch-to-batch consistency, easy scale-up, and future security of supply.

This conjugation ready format makes antibodies ideal for use in many applications including: ELISAs, multiplex assays requiring matched pairs, mass cytometry, and multiplex imaging applications. Antibody use should be optimized by the end user for each application and assay.

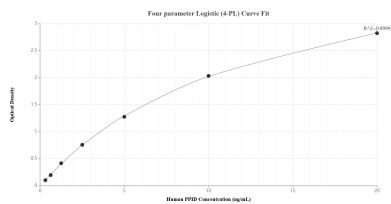
## Storage

**Storage:**  
Store at -80°C.  
**Storage Buffer:**  
PBS only, pH7.3

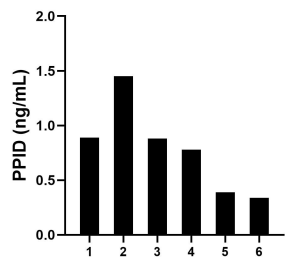
For technical support and original validation data for this product please contact:  
T: 1 (888) 4PTGLAB (1-888-478-4522) (toll free in USA), or 1(312) 455-8498 (outside USA)  
E: [proteintech@ptglab.com](mailto:proteintech@ptglab.com)  
W: [ptglab.com](http://ptglab.com)

This product is exclusively available under Proteintech Group brand and is not available to purchase from any other manufacturer.

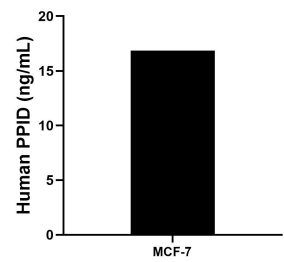
# Selected Validation Data



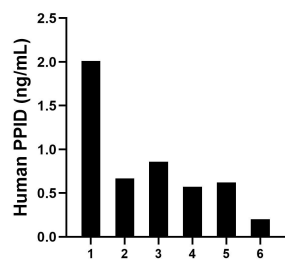
Sandwich ELISA standard curve of MP01018-4, Human PPID Recombinant Matched Antibody Pair - PBS only. 84115-7-PBS was coated to a plate as the capture antibody and incubated with serial dilutions of standard Ag3409. 84115-2-PBS was HRP conjugated as the detection antibody. Range: 0.313-20 ng/mL



Serum of six rats was measured. The PPID concentration of detected samples was determined to be 0.79 ng/mL with a range of 0.34-1.45 ng/mL.



The mean PPID concentration was determined to be 16.84 ng/mL in MCF-7 cell extract based on a 1.20 mg/mL extract load.



Serum of six individual healthy human donors was measured. The PPID concentration of detected samples was determined to be 0.82 ng/mL with a range of 0.20-2.01 ng/mL