

For Research Use Only

SCF Recombinant monoclonal antibody, PBS Only (Detector)

Catalog Number: 84118-8-PBS



Basic Information

Catalog Number:

84118-8-PBS

Size:

100ug, Concentration: 1 mg/ml by
Nanodrop;

Source:

Rabbit

Isotype:

IgG

Immunogen Catalog Number:

HZ-1024

GenBank Accession Number:

GeneID (NCBI):

4254

UNIPROT ID:

P21583

Full Name:

KIT ligand

Purification Method:

Protein A purification

CloneNo.:

250446B11

Applications

Tested Applications:

Sandwich ELISA, Indirect ELISA

Species Specificity:

human

Product Information

84118-8-PBS targets SCF as part of a matched antibody pair:

MP01028-4: 84118-9-PBS capture and 84118-8-PBS detection (validated in Sandwich ELISA)

Unconjugated rabbit recombinant monoclonal antibody in PBS only (BSA and azide free) storage buffer at a concentration of 1 mg/mL, ready for conjugation. Created using Proteintech's proprietary in-house recombinant technology. Recombinant production enables unrivalled batch-to-batch consistency, easy scale-up, and future security of supply.

This conjugation ready format makes antibodies ideal for use in many applications including: ELISAs, multiplex assays requiring matched pairs, mass cytometry, and multiplex imaging applications. Antibody use should be optimized by the end user for each application and assay.

Storage

Storage:

Store at -80°C.

Storage Buffer:

PBS only, pH7.3

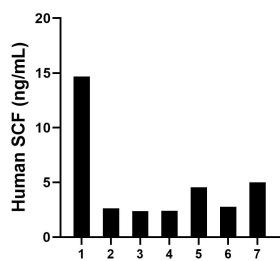
For technical support and original validation data for this product please contact:

T: 1 (888) 4PTGLAB (1-888-478-4522) (toll free
in USA), or 1(312) 455-8498 (outside USA)

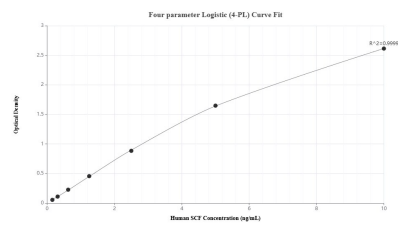
E: proteintech@ptglab.com
W: ptglab.com

This product is exclusively available under Proteintech Group brand and is not available to purchase from any other manufacturer.

Selected Validation Data



Plasma of seven individual healthy human donors was measured. The human SCF concentration of detected samples was determined to be 4.91 ng/mL with a range of 2.40 - 14.68 ng/mL.



Sandwich ELISA standard curve of MP01028-4, Human SCF Recombinant Matched Antibody Pair - PBS only. 84118-9-PBS was coated to a plate as the capture antibody and incubated with serial dilutions of standard HZ-1024. 84118-8-PBS was HRP conjugated as the detection antibody. Range: 0.156-10 ng/mL