

For Research Use Only

DPP10 Recombinant antibody, PBS Only (Capture/Detector)

Catalog Number: 84127-2-PBS



Basic Information

Catalog Number: 84127-2-PBS	GenBank Accession Number: BC030832	Purification Method: Protein A purification
Size: 100ug , Concentration: 1 mg/ml by Nanodrop;	GeneID (NCBI): 57628	CloneNo.: 241446A5
Source: Rabbit	UNIPROT ID: Q8N608	
Isotype: IgG	Full Name: dipeptidyl-peptidase 10	
Immunogen Catalog Number: AG3231	Calculated MW: 796 aa, 91 kDa	
	Observed MW: 91 kDa	

Applications

Tested Applications:
WB, IP, Cytometric bead array, Sandwich ELISA, Indirect ELISA, Sample test

Species Specificity:
human, mouse, rat, pig

Product Information

84127-2-PBS targets DPP10 as part of a matched antibody pair:

MP01035-1: 84127-3-PBS capture and 84127-2-PBS detection (validated in Cytometric bead array)

MP01035-3: 84127-2-PBS capture and 84127-3-PBS detection (validated in Sandwich ELISA)

Unconjugated rabbit recombinant monoclonal antibody in PBS only (BSA and azide free) storage buffer at a concentration of 1 mg/mL, ready for conjugation. Created using Proteintech's proprietary in-house recombinant technology. Recombinant production enables unrivalled batch-to-batch consistency, easy scale-up, and future security of supply.

This conjugation ready format makes antibodies ideal for use in many applications including: ELISAs, multiplex assays requiring matched pairs, mass cytometry, and multiplex imaging applications. Antibody use should be optimized by the end user for each application and assay.

Background Information

DPP10 is a single-pass type II membrane protein that is a member of the S9B family in clan SC of the serine proteases. DPP10 is an inactive peptidase that modulates the electrophysiological properties, cell-surface expression and subcellular localization of voltage-gated potassium channels.

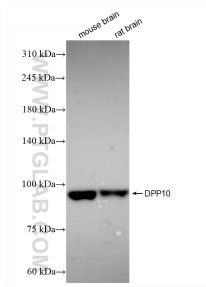
Storage

Storage:
Store at -80°C.
Storage Buffer:
PBS Only

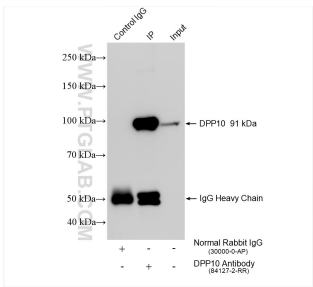
For technical support and original validation data for this product please contact:
T: 1 (888) 4PTGLAB (1-888-478-4522) (toll free in USA), or 1(312) 455-8498 (outside USA)
E: proteintech@ptglab.com
W: ptglab.com

This product is exclusively available under Proteintech Group brand and is not available to purchase from any other manufacturer.

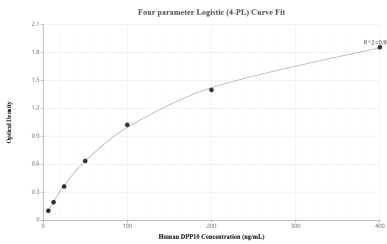
Selected Validation Data



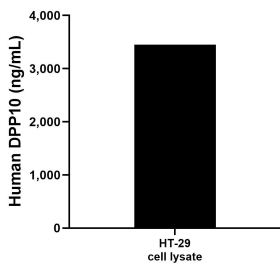
Various lysates were subjected to SDS PAGE followed by western blot with 84127-2-RR (DPP10 antibody) at dilution of 1:10000 incubated at room temperature for 1.5 hours. This data was developed using the same antibody clone with 84127-2-PBS in a different storage buffer formulation.



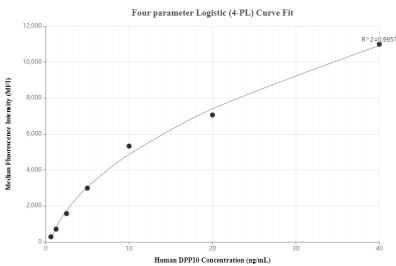
IP result of anti-DPP10 (IP:84127-2-RR, 4ug; Detection:84127-2-RR 1:1000) with pig brain tissue lysate 1240 ug. This data was developed using the same antibody clone with 84127-2-PBS in a different storage buffer formulation.



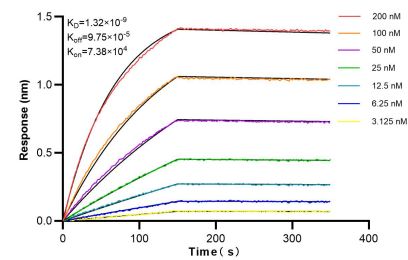
Sandwich ELISA standard curve of MP01035-3, Human DPP10 Recombinant Matched Antibody Pair - PBS only. 84127-2-PBS was coated to a plate as the capture antibody and incubated with serial dilutions of standard Ag3231. 84127-3-PBS was HRP conjugated as the detection antibody. Range: 6.25-400 ng/mL



HT-29 cell lysate was measured. The human DPP10 concentration of detected samples was determined to be 3,448.25 ng/mL (based on a 4.4 mg/mL extract load).



Cytometric bead array standard curve of MP01035-1, DPP10 Recombinant Matched Antibody Pair, PBS Only. Capture antibody: 84127-3-PBS. Detection antibody: 84127-2-PBS. Standard: Ag3231. Range: 0.625-40 ng/mL



Bi-layer interferometry (BLI) kinetic assays of 84127-2-RR against Human DPP10 were performed. The affinity constant is 1.32 nM.