

For Research Use Only

DPP10 Recombinant antibody, PBS Only (Capture/Detector)

Catalog Number: 84127-3-PBS



Basic Information

| | | |
|---|--|---|
| Catalog Number: 84127-3-PBS | GenBank Accession Number: BC030832 | Purification Method: Protein A purification |
| Size: 100ug , Concentration: 1 mg/ml by Nanodrop; | GeneID (NCBI): 57628 | CloneNo.: 241446G10 |
| Source: Rabbit | UNIPROT ID: Q8N608 | |
| Isotype: IgG | Full Name: dipeptidyl-peptidase 10 | |
| Immunogen Catalog Number: AG3231 | Calculated MW: 796 aa, 91 kDa | |

Applications

Tested Applications:
Cytometric bead array, Sandwich ELISA, Indirect ELISA, Sample test

Species Specificity:
human

Product Information

84127-3-PBS targets DPP10 as part of a matched antibody pair:

MP01035-1: 84127-3-PBS capture and 84127-2-PBS detection (validated in Cytometric bead array)

MP01035-3: 84127-2-PBS capture and 84127-3-PBS detection (validated in Sandwich ELISA)

Unconjugated rabbit recombinant monoclonal antibody in PBS only (BSA and azide free) storage buffer at a concentration of 1 mg/mL, ready for conjugation. Created using Proteintech's proprietary in-house recombinant technology. Recombinant production enables unrivalled batch-to-batch consistency, easy scale-up, and future security of supply.

This conjugation ready format makes antibodies ideal for use in many applications including: ELISAs, multiplex assays requiring matched pairs, mass cytometry, and multiplex imaging applications. Antibody use should be optimized by the end user for each application and assay.

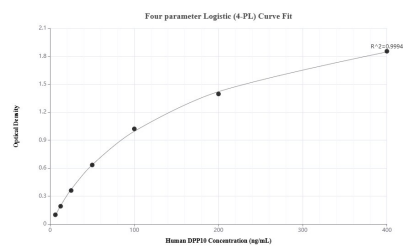
Storage

Storage:
Store at -80°C.
Storage Buffer:
PBS Only

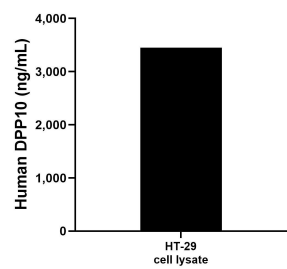
For technical support and original validation data for this product please contact:
T: 1 (888) 4PTGLAB (1-888-478-4522) (toll free in USA), or 1(312) 455-8498 (outside USA)
E: proteintech@ptglab.com
W: ptglab.com

This product is exclusively available under Proteintech Group brand and is not available to purchase from any other manufacturer.

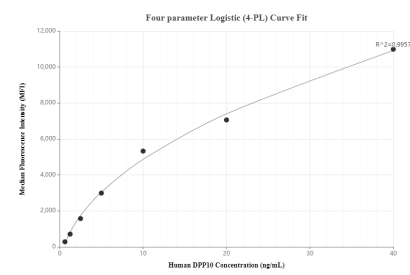
Selected Validation Data



Sandwich ELISA standard curve of MP01035-3, Human DPP10 Recombinant Matched Antibody Pair - PBS only. 84127-2-PBS was coated to a plate as the capture antibody and incubated with serial dilutions of standard Ag3231. 84127-3-PBS was HRP conjugated as the detection antibody. Range: 6.25-400 ng/mL



HT-29 cell lysate was measured. The human DPP10 concentration of detected samples was determined to be 3,448.25 ng/mL (based on a 4.4 mg/mL extract load).



Cytometric bead array standard curve of MP01035-1, DPP10 Recombinant Matched Antibody Pair, PBS Only. Capture antibody: 84127-3-PBS. Detection antibody: 84127-2-PBS. Standard: Ag3231. Range: 0.625-40 ng/mL