

For Research Use Only

Mouse HER2/ErbB2 Recombinant antibody, PBS Only

Catalog Number: 84128-5-PBS



Basic Information

Catalog Number:

84128-5-PBS

Size:

100ug, Concentration: 1 mg/ml by Nanodrop;

Source:

Rabbit

Isotype:

IgG

GenBank Accession Number:

NM_001003817.1

GeneID (NCBI):

13866

UNIPROT ID:

P70424

Full Name:

v-erb-b2 erythroblastic leukemia viral oncogene homolog 2, neuro/glioblastoma derived oncogene homolog (avian)

Calculated MW:

139 kDa

Observed MW:

185 kDa

Purification Method:

Protein A purification

CloneNo.:

241366F4

Applications

Tested Applications:

WB, IF/ICC, Indirect ELISA

Species Specificity:

mouse

Background Information

Her2, or ErbB2, is a member of the EGF receptor family of receptor tyrosine kinases. It has no ligand-binding domain of its own. However, it does bind tightly to other ligand-bound EGF receptor family members to form a heterodimer, stabilizing ligand binding and enhancing kinase-mediated activation of downstream signaling pathways, such as those involving mitogen-activated protein kinase and phosphatidylinositol-3 kinase.

Storage

Storage:

Store at -80°C.

Storage Buffer:

PBS Only

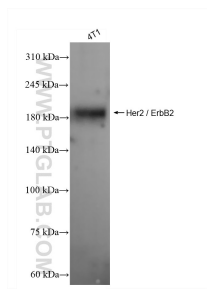
For technical support and original validation data for this product please contact:

T: 1 (888) 4PTGLAB (1-888-478-4522) (toll free in USA), or 1(312) 455-8498 (outside USA)

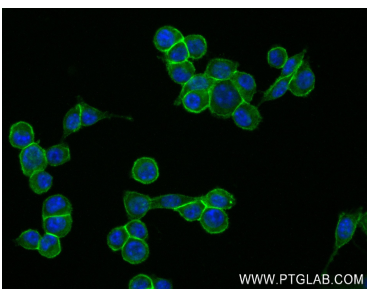
E: proteintech@ptglab.com
W: ptglab.com

This product is exclusively available under Proteintech Group brand and is not available to purchase from any other manufacturer.

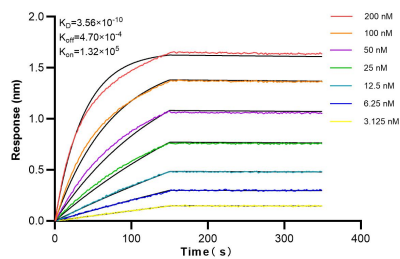
Selected Validation Data



4T1 cells were subjected to SDS PAGE followed by western blot with 84128-5-RR (Her2 / ErbB2 antibody) at dilution of 1:3000 incubated at room temperature for 1.5 hours. This data was developed using the same antibody clone with 84128-5-PBS in a different storage buffer formulation.



Immunofluorescent analysis of (4% PFA) fixed 4T1 cells using Her2 / ErbB2 antibody (84128-5-RR, Clone: 241366F4) at dilution of 1:250 and CoraLite®488-Conjugated Goat Anti-Rabbit IgG(H+L) (SA00013-2). This data was developed using the same antibody clone with 84128-5-PBS in a different storage buffer formulation.



Biolayer interferometry (BLI) kinetic assays of 84128-5-RR against Mouse Her2 / ErbB2 were performed. The affinity constant is 0.356 nM.