

For Research Use Only

# HER2/ErbB2 Recombinant antibody

Catalog Number: 84128-5-RR



## Basic Information

<b>Catalog Number:</b> 84128-5-RR	<b>GenBank Accession Number:</b> NM_001003817.1	<b>Purification Method:</b> Protein A purification
<b>Size:</b> 100ul , Concentration: 1000 ug/ml by Nanodrop;	<b>GeneID (NCBI):</b> 13866	<b>CloneNo.:</b> 241366F4
<b>Source:</b> Rabbit	<b>UNIPROT ID:</b> P70424	<b>Recommended Dilutions:</b> WB 1:1000-1:6000 IF/ICC 1:125-1:500
<b>Isotype:</b> IgG	<b>Full Name:</b> v-erb-b2 erythroblastic leukemia viral oncogene homolog 2, neuro/glioblastoma derived oncogene homolog (avian)	
	<b>Calculated MW:</b> 139 kDa	
	<b>Observed MW:</b> 185 kDa	

## Applications

<b>Tested Applications:</b> WB, IF/ICC, ELISA	<b>Positive Controls:</b>
<b>Species Specificity:</b> mouse	<b>WB :</b> 4T1 cells, <b>IF/ICC :</b> 4T1 cells,

## Background Information

Her2, or ErbB2, is a member of the EGF receptor family of receptor tyrosine kinases. It has no ligand-binding domain of its own. However, it does bind tightly to other ligand-bound EGF receptor family members to form a heterodimer, stabilizing ligand binding and enhancing kinase-mediated activation of downstream signaling pathways, such as those involving mitogen-activated protein kinase and phosphatidylinositol-3 kinase.

## Storage

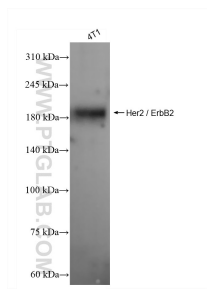
**Storage:**  
Store at -20°C. Stable for one year after shipment.  
**Storage Buffer:**  
PBS with 0.02% sodium azide and 50% glycerol pH 7.3.  
**Aliquoting is unnecessary for -20°C storage**

\*\*\* 20ul sizes contain 0.1% BSA

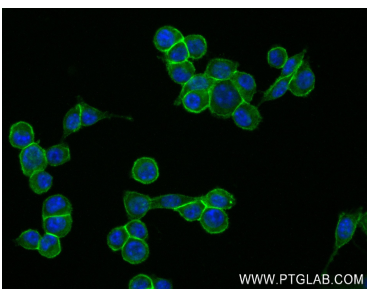
For technical support and original validation data for this product please contact:  
T: 1 (888) 4PTGLAB (1-888-478-4522) (toll free in USA), or 1(312) 455-8498 (outside USA)  
E: [proteintech@ptglab.com](mailto:proteintech@ptglab.com)  
W: [ptglab.com](http://ptglab.com)

This product is exclusively available under Proteintech Group brand and is not available to purchase from any other manufacturer.

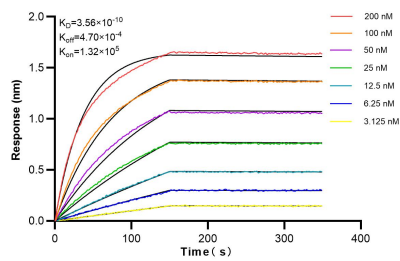
## Selected Validation Data



4T1 cells were subjected to SDS PAGE followed by western blot with 84128-5-RR (Her2 / ErbB2 antibody) at dilution of 1:3000 incubated at room temperature for 1.5 hours.



Immunofluorescent analysis of (4% PFA) fixed 4T1 cells using Her2 / ErbB2 antibody (84128-5-RR, Clone: 241366F4 ) at dilution of 1:250 and CoraLite®488-Conjugated Goat Anti-Rabbit IgG(H+L) (SA00013-2).



Biolayer interferometry (BLI) kinetic assays of 84128-5-RR against Mouse Her2 / ErbB2 were performed. The affinity constant is 0.356 nM.