

For Research Use Only

FABP6 Recombinant antibody, PBS Only (Capture/Detector)

Catalog Number: 84132-1-PBS



Basic Information

Catalog Number: 84132-1-PBS	GenBank Accession Number: BC022489	Purification Method: Protein A purification
Size: 100ug, Concentration: 1 mg/ml by Nanodrop;	GeneID (NCBI): 2172	CloneNo.: 241095A7
Source: Rabbit	UNIPROT ID: P51161	
Isotype: IgG	Full Name: fatty acid binding protein 6, ileal	
Immunogen Catalog Number: AG4788	Calculated MW: 177 aa, 20 kDa	

Applications

Tested Applications:
Cytometric bead array, Sandwich ELISA, Indirect ELISA, Sample test

Species Specificity:
human

Product Information

84132-1-PBS targets FABP6 as part of a matched antibody pair:

MP01052-1: 84132-2-PBS capture and 84132-1-PBS detection (validated in Cytometric bead array)

MP01052-2: 84132-1-PBS capture and 84132-2-PBS detection (validated in Sandwich ELISA)

Unconjugated rabbit recombinant monoclonal antibody in PBS only (BSA and azide free) storage buffer at a concentration of 1 mg/mL, ready for conjugation. Created using Proteintech's proprietary in-house recombinant technology. Recombinant production enables unrivalled batch-to-batch consistency, easy scale-up, and future security of supply.

This conjugation ready format makes antibodies ideal for use in many applications including: ELISAs, multiplex assays requiring matched pairs, mass cytometry, and multiplex imaging applications. Antibody use should be optimized by the end user for each application and assay.

Storage

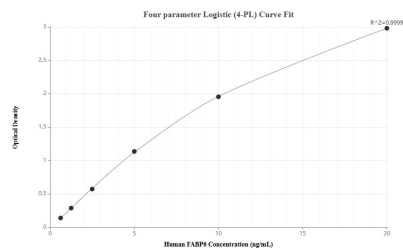
Storage:
Store at -80°C.

Storage Buffer:
PBS Only

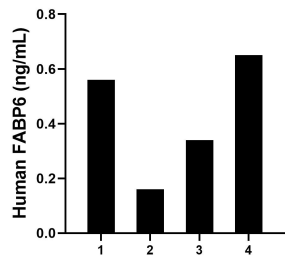
For technical support and original validation data for this product please contact:
T: 1 (888) 4PTGLAB (1-888-478-4522) (toll free in USA), or 1(312) 455-8498 (outside USA)
E: proteintech@ptglab.com
W: ptglab.com

This product is exclusively available under Proteintech Group brand and is not available to purchase from any other manufacturer.

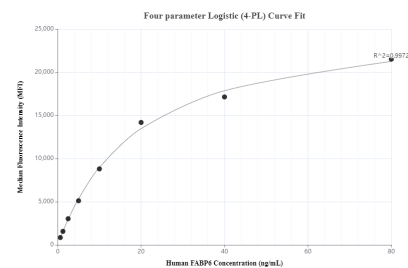
Selected Validation Data



Sandwich ELISA standard curve of MP01052-2, Human FABP6 Recombinant Matched Antibody Pair - PBS only. 84132-1-PBS was coated to a plate as the capture antibody and incubated with serial dilutions of standard Ag4788. 84132-2-PBS was HRP conjugated as the detection antibody. Range: 0.625-20 ng/mL



Serum of four individual healthy human donors was measured. The human FABP6 concentration of detected samples was determined to be 0.43 ng/mL with a range of 0.16 - 0.65 ng/mL



Cytometric bead array standard curve of MP01052-1, FABP6 Recombinant Matched Antibody Pair, PBS Only. Capture antibody: 84132-2-PBS. Detection antibody: 84132-1-PBS. Standard: Ag4788. Range: 0.625-80 ng/mL