

For Research Use Only

NELFB Recombinant antibody, PBS Only (Capture)

Catalog Number: 84135-4-PBS



Basic Information

Catalog Number: 84135-4-PBS	GenBank Accession Number: BC011892	Purification Method: Protein A purification
Size: 100ug , Concentration: 1 mg/ml by Nanodrop;	GeneID (NCBI): 25920	CloneNo.: 241434F12
Source: Rabbit	UNIPROT ID: Q8WX92	
Isotype: IgG	Full Name: cofactor of BRCA1	
Immunogen Catalog Number: AG9599	Calculated MW: 580aa,66 kDa; 475aa,54 kDa	
	Observed MW: 66 kDa	

Applications

Tested Applications:
WB, IF/ICC, FC (Intra), Cytometric bead array, Indirect ELISA

Species Specificity:
human

Product Information

84135-4-PBS targets NELFB as part of a matched antibody pair:

MP01055-1: 84135-4-PBS capture and 84135-1-PBS detection (validated in Cytometric bead array)

MP01055-3: 84135-4-PBS capture and 84135-3-PBS detection (validated in Cytometric bead array)

Unconjugated rabbit recombinant monoclonal antibody in PBS only (BSA and azide free) storage buffer at a concentration of 1 mg/mL, ready for conjugation. Created using Proteintech's proprietary in-house recombinant technology. Recombinant production enables unrivalled batch-to-batch consistency, easy scale-up, and future security of supply.

This conjugation ready format makes antibodies ideal for use in many applications including: ELISAs, multiplex assays requiring matched pairs, mass cytometry, and multiplex imaging applications. Antibody use should be optimized by the end user for each application and assay.

Background Information

Cofactor of BRCA1 (COBRA1) was first identified as a BRCA1-interacting protein and subsequently found to be the B subunit of the negative elongation factor complex (NELF-B). Cobra1 is essential for early embryogenesis (PMID: 19340312). The MW of this protein is 66 kDa, and this antibody specially recognises the 66 kDa protein.

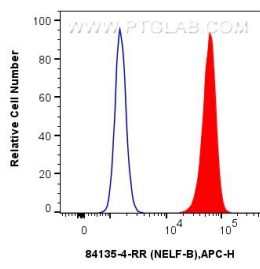
Storage

Storage:
Store at -80°C.
Storage Buffer:
PBS Only

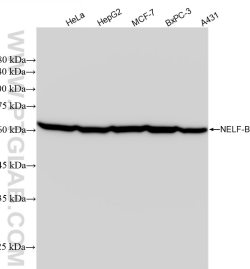
For technical support and original validation data for this product please contact:
T: 1 (888) 4PTGLAB (1-888-478-4522) (toll free in USA), or 1(312) 455-8498 (outside USA)
E: proteintech@ptglab.com
W: ptglab.com

This product is exclusively available under Proteintech Group brand and is not available to purchase from any other manufacturer.

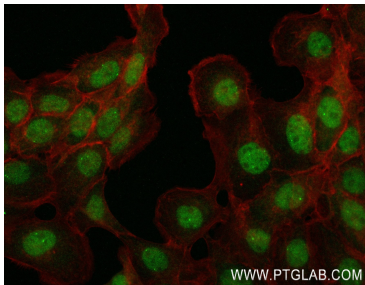
Selected Validation Data



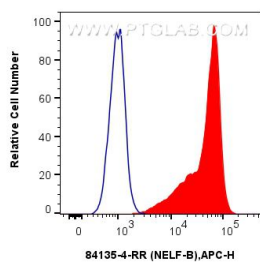
1x10⁶ A431 cells were intracellularly stained with 0.25 ug NELF-B Recombinant antibody (84135-4-RR, Clone:241434F12) and APC-Conjugated Goat Anti-Rabbit IgG(H+L)(red), or 0.25 ug Isotype Control (blue). Cells were fixed and permeabilized with True-Nuclear Transcription Factor Buffer Set. This data was developed using the same antibody clone with 84135-4-PBS in a different storage buffer formulation.



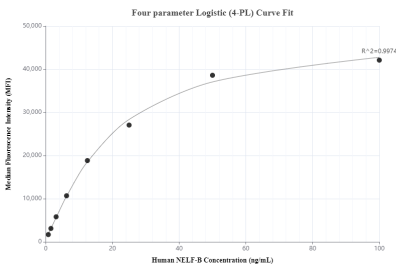
Various lysates were subjected to SDS PAGE followed by western blot with 84135-4-RR (NELF-B antibody) at dilution of 1:10000 incubated at room temperature for 1.5 hours. This data was developed using the same antibody clone with 84135-4-PBS in a different storage buffer formulation.



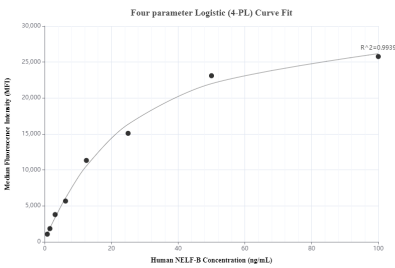
Immunofluorescent analysis of (4% PFA) fixed A431 cells using NELF-B antibody (84135-4-RR, Clone: 241434F12) at dilution of 1:400 and CoraLite®488-Conjugated Goat Anti-Rabbit IgG(H+L) (SA00013-2), CL594-Phalloidin (red). This data was developed using the same antibody clone with 84135-4-PBS in a different storage buffer formulation.



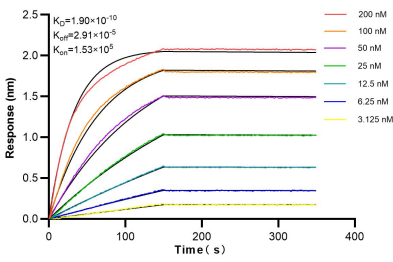
1x10⁶ BxPC-3 cells were intracellularly stained with 0.25 ug NELF-B Recombinant antibody (84135-4-RR, Clone:241434F12) and APC-Conjugated Goat Anti-Rabbit IgG(H+L)(red), or 0.25 ug Isotype Control (blue). Cells were fixed and permeabilized with True-Nuclear Transcription Factor Buffer Set. This data was developed using the same antibody clone with 84135-4-PBS in a different storage buffer formulation.



Cytometric bead array standard curve of MP01055-1, NELF-B Recombinant Matched Antibody Pair, PBS Only. Capture antibody: 84135-4-PBS. Detection antibody: 84135-1-PBS. Standard: Ag9599. Range: 0.781-100 ng/mL.



Cytometric bead array standard curve of MP01055-3, NELF-B Recombinant Matched Antibody Pair, PBS Only. Capture antibody: 84135-4-PBS. Detection antibody: 84135-3-PBS. Standard: Ag9599. Range: 0.781-100 ng/mL.



Biolayer interferometry (BLI) kinetic assays of 84135-4-RR against Human NELF-B were performed. The affinity constant is 0.199 nM.