

For Research Use Only

# NELFB Recombinant antibody

Catalog Number: 84135-4-RR



## Basic Information

Catalog Number:

84135-4-RR

Size:

100ul , Concentration: 1000 ug/ml by Nanodrop;

Source:

Rabbit

Isotype:

IgG

Immunogen Catalog Number:

AG9599

GenBank Accession Number:

BC011892

GeneID (NCBI):

25920

UNIPROT ID:

Q8WX92

Full Name:

cofactor of BRCA1

Calculated MW:

580aa,66 kDa; 475aa,54 kDa

Observed MW:

66 kDa

Purification Method:

Protein A purification

CloneNo.:

241434F12

Recommended Dilutions:

WB 1:5000-1:50000

IF/ICC 1:200-1:800

## Applications

Tested Applications:

WB, IF/ICC, FC (Intra), ELISA

Species Specificity:

human

Positive Controls:

WB : HeLa cells, HepG2 cells, MCF-7 cells, BxPC-3 cells, A431 cells

IF/ICC : A431 cells,

## Background Information

Cofactor of BRCA1 (COBRA1) was first identified as a BRCA1-interacting protein and subsequently found to be the B subunit of the negative elongation factor complex (NELF-B). Cobra1 is essential for early embryogenesis (PMID: 19340312). The MW of this protein is 66 kDa, and this antibody specially recognises the 66 kDa protein.

## Storage

Storage:

Store at -20°C. Stable for one year after shipment.

Storage Buffer:

PBS with 0.02% sodium azide and 50% glycerol pH 7.3.

Aliquoting is unnecessary for -20°C storage

\*\*\* 20ul sizes contain 0.1% BSA

For technical support and original validation data for this product please contact:

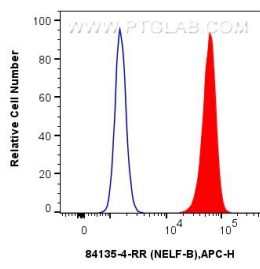
T: 1 (888) 4PTGLAB (1-888-478-4522) (toll free in USA), or 1(312) 455-8498 (outside USA)

E: [proteintech@ptglab.com](mailto:proteintech@ptglab.com)

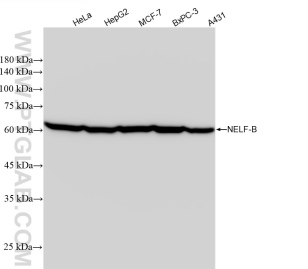
W: [ptglab.com](http://ptglab.com)

This product is exclusively available under Proteintech Group brand and is not available to purchase from any other manufacturer.

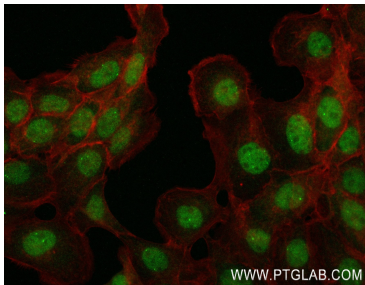
Selected Validation Data



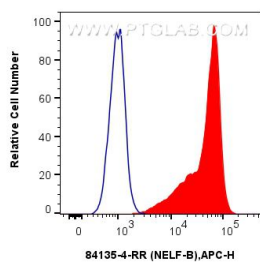
1x10<sup>6</sup> A431 cells were intracellularly stained with 0.25 ug NELF-B Recombinant antibody (84135-4-RR, Clone:241434F12) and APC-Conjugated Goat Anti-Rabbit IgG(H+L)(red), or 0.25 ug Isotype Control (blue). Cells were fixed and permeabilized with True-Nuclear Transcription Factor Buffer Set.



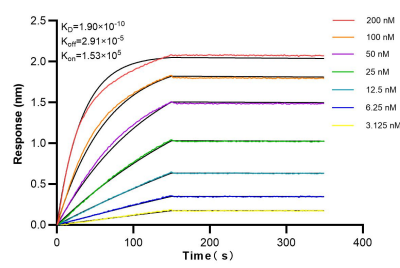
Various lysates were subjected to SDS PAGE followed by western blot with 84135-4-RR (NELF-B antibody) at dilution of 1:10000 incubated at room temperature for 1.5 hours.



Immunofluorescent analysis of (4% PFA) fixed A431 cells using NELF-B antibody (84135-4-RR, Clone: 241434F12) at dilution of 1:400 and CoraLite@488-Conjugated Goat Anti-Rabbit IgG(H+L) (SA00013-2), CL594-Phalloidin (red).



1x10<sup>6</sup> BxPC-3 cells were intracellularly stained with 0.25 ug NELF-B Recombinant antibody (84135-4-RR, Clone:241434F12) and APC-Conjugated Goat Anti-Rabbit IgG(H+L)(red), or 0.25 ug Isotype Control (blue). Cells were fixed and permeabilized with True-Nuclear Transcription Factor Buffer Set.



Biolayer interferometry (BLI) kinetic assays of 84135-4-RR against Human NELF-B were performed. The affinity constant is 0.199 nM.