

For Research Use Only

Mouse CD80 Recombinant antibody, PBS Only (Capture/Detector)

Catalog Number: 84137-4-PBS



Basic Information

Catalog Number:

84137-4-PBS

Size:

100ug, Concentration: 1 mg/ml by
Nanodrop;

Source:

Rabbit

Isotype:

IgG

GenBank Accession Number:

NM_009855.2

GeneID (NCBI):

12519

UNIPROT ID:

Q00609-1

Full Name:

CD80 antigen

Calculated MW:

35 kDa

Purification Method:

Protein A purification

CloneNo.:

241371E12

Applications

Tested Applications:

Cytometric bead array, Sandwich ELISA, Indirect ELISA,
Sample test

Species Specificity:

mouse

Product Information

84137-4-PBS targets CD80 as part of a matched antibody pair:

MP01051-1: 84137-2-PBS capture and 84137-4-PBS detection (validated in Cytometric bead array)

MP01051-2: 84137-4-PBS capture and 84137-1-PBS detection (validated in Cytometric bead array)

MP01051-4: 84137-6-PBS capture and 84137-4-PBS detection (validated in Sandwich ELISA)

Unconjugated rabbit recombinant monoclonal antibody in PBS only (BSA and azide free) storage buffer at a concentration of 1 mg/mL, ready for conjugation. Created using Proteintech's proprietary in-house recombinant technology. Recombinant production enables unrivalled batch-to-batch consistency, easy scale-up, and future security of supply.

This conjugation ready format makes antibodies ideal for use in many applications including: ELISAs, multiplex assays requiring matched pairs, mass cytometry, and multiplex imaging applications. Antibody use should be optimized by the end user for each application and assay.

Storage

Storage:

Store at -80°C.

Storage Buffer:

PBS Only

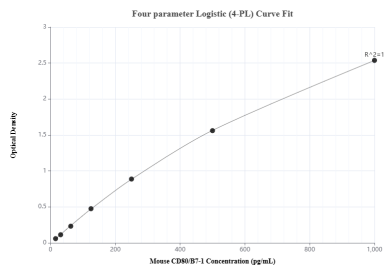
For technical support and original validation data for this product please contact:

T: 1 (888) 4PTGLAB (1-888-478-4522) (toll free
in USA), or 1(312) 455-8498 (outside USA)

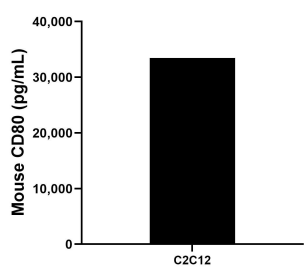
E: proteintech@ptglab.com
W: ptglab.com

This product is exclusively available under Proteintech Group brand and is not available to purchase from any other manufacturer.

Selected Validation Data



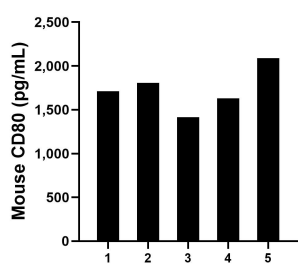
Sandwich ELISA standard curve of MP01051-4, Mouse CD80/B7-1 Recombinant Matched Antibody Pair - PBS only. 84137-6-PBS was coated to a plate as the capture antibody and incubated with serial dilutions of standard Eg0840. 84137-4-PBS was HRP conjugated as the detection antibody. Range: 15.6-1000 pg/mL



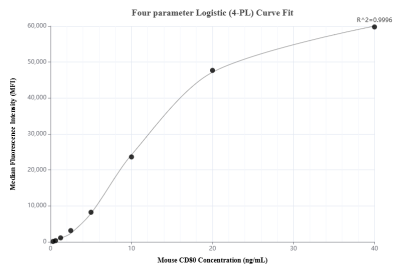
The mean CD80/B7-1 concentration was determined to be 33,454.1 pg/mL in C2C12 cell extract based on a 3.2 mg/mL extract load.



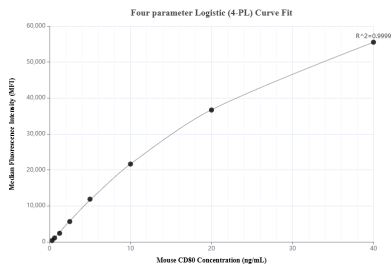
Mouse spleen tissue was cultured in RPMI supplemented with 10% fetal bovine serum, 5 µM β-mercaptoethanol, 2 mM L-glutamine, 100 U/mL penicillin, and 100 µg/mL streptomycin sulfate. An aliquot of the cell culture supernate was removed, assayed for mouse CD80/B7-1, and measured 10.44 pg/mL



Serum of five mice was measured. The mouse CD80/B7-1 concentration of detected samples was determined to be 1,731.45 pg/mL with a range of 1,416.7 - 2,090.4 ng/mL



Cytometric bead array standard curve of MP01051-1, MOUSE CD80 Recombinant Matched Antibody Pair, PBS Only. Capture antibody: 84137-2-PBS. Detection antibody: 84137-4-PBS. Standard: Eg0840. Range: 0.313-40 ng/mL



Cytometric bead array standard curve of MP01051-2, MOUSE CD80 Recombinant Matched Antibody Pair, PBS Only. Capture antibody: 84137-2-PBS. Detection antibody: 84137-1-PBS. Standard: Eg0840. Range: 0.313-40 ng/mL