

For Research Use Only

CD155/PVR Recombinant antibody, PBS Only (Capture)

Catalog Number: 84138-1-PBS



Basic Information

Catalog Number: 84138-1-PBS	GenBank Accession Number: BC015542	Purification Method: Protein A purification
Size: 100ug , Concentration: 1 mg/ml by Nanodrop;	GeneID (NCBI): 5817	CloneNo.: 241405B2
Source: Rabbit	UNIPROT ID: P15151	
Isotype: IgG	Full Name: poliovirus receptor	
	Calculated MW: 45 kDa	

Applications

Tested Applications:
IF/ICC, Cytometric bead array, Indirect ELISA

Species Specificity:
human

Product Information

84138-1-PBS targets CD155/PVR as part of a matched antibody pair:

MP01053-1: 84138-1-PBS capture and 84138-2-PBS detection (validated in Cytometric bead array)

MP01053-2: 84138-1-PBS capture and 84138-4-PBS detection (validated in Cytometric bead array)

Unconjugated rabbit recombinant monoclonal antibody in PBS only (BSA and azide free) storage buffer at a concentration of 1 mg/mL, ready for conjugation. Created using Proteintech's proprietary in-house recombinant technology. Recombinant production enables unrivalled batch-to-batch consistency, easy scale-up, and future security of supply.

This conjugation ready format makes antibodies ideal for use in many applications including: ELISAs, multiplex assays requiring matched pairs, mass cytometry, and multiplex imaging applications. Antibody use should be optimized by the end user for each application and assay.

Background Information

CD155, also known as PVR, is a type I transmembrane glycoprotein in the immunoglobulin superfamily. It contains three extracellular immunoglobulin-like domains, D1-D3, of which D1 is recognized by the virus. Mature human CD155 consists of a 323 amino acid extracellular domain with one N-terminal V-type and two C2-type Ig-like domains, a 24 amino acid transmembrane segment, and a 50 amino acid cytoplasmic tail. CD155 is thought to play a role in adhesion by interaction with the ECM component vitronectin as well as a role in NK killing of tumor cells. CD155 binds to two receptors of NK cells, CD96 and CD226, and accumulates at cell-cell contact sites, leading to the formation of mature immune synapses between NK cells and target cells. CD155 serves as the entry receptor for poliovirus and thereby mediates human susceptibility to poliovirus infection.

Storage

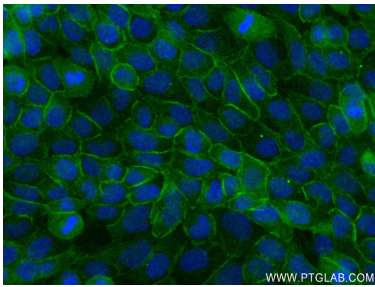
Storage:
Store at -80°C.

Storage Buffer:
PBS Only

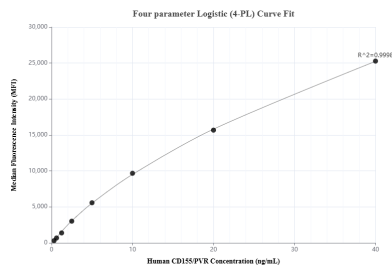
For technical support and original validation data for this product please contact:
T: 1 (888) 4PTGLAB (1-888-478-4522) (toll free in USA), or 1(312) 455-8498 (outside USA)
E: proteintech@ptglab.com
W: ptglab.com

This product is exclusively available under Proteintech Group brand and is not available to purchase from any other manufacturer.

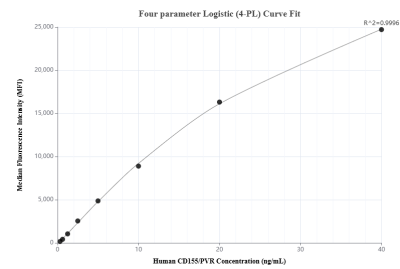
Selected Validation Data



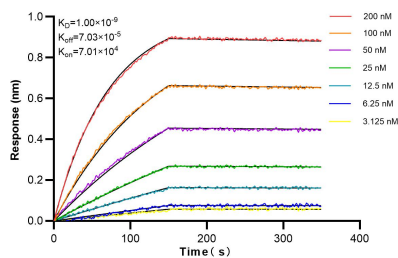
Immunofluorescent analysis of (4% PFA) fixed A431 cells using CD155/PVR antibody (84138-1-RR, Clone: 241405B2) at dilution of 1:400 and CoraLite®488-Conjugated Goat Anti-Rabbit IgG(H+L) (SA00013-2). This data was developed using the same antibody clone with 84138-1-PBS in a different storage buffer formulation.



Cytometric bead array standard curve of MP01053-1, CD155/PVR Recombinant Matched Antibody Pair, PBS Only. Capture antibody: 84138-1-PBS. Detection antibody: 84138-2-PBS. Standard: Eg0971. Range: 0.313-40 ng/mL.



Cytometric bead array standard curve of MP01053-2, CD155/PVR Recombinant Matched Antibody Pair, PBS Only. Capture antibody: 84138-1-PBS. Detection antibody: 84138-4-PBS. Standard: Eg0971. Range: 0.313-40 ng/mL.



Biolayer interferometry (BLI) kinetic assays of 84138-1-RR against Human CD155/PVR were performed. The affinity constant is 1.00 nM.