

For Research Use Only

# CD155/PVR Recombinant antibody, PBS Only (Detector)

Catalog Number: 84138-2-PBS



## Basic Information

Catalog Number:

84138-2-PBS

Size:

100ug, Concentration: 1 mg/ml by Nanodrop;

Source:

Rabbit

Isotype:

IgG

GenBank Accession Number:

BC015542

GeneID (NCBI):

5817

UNIPROT ID:

P15151

Full Name:

poliovirus receptor

Calculated MW:

45 kDa

Purification Method:

Protein A purification

CloneNo.:

241405D2

## Applications

Tested Applications:

Cytometric bead array, Sandwich ELISA, Indirect ELISA, Sample test

Species Specificity:

human

## Product Information

84138-2-PBS targets CD155/PVR as part of a matched antibody pair:

MP01053-1: 84138-1-PBS capture and 84138-2-PBS detection (validated in Cytometric bead array)

MP01053-4: 84138-6-PBS capture and 84138-2-PBS detection (validated in Sandwich ELISA)

Unconjugated rabbit recombinant monoclonal antibody in PBS only (BSA and azide free) storage buffer at a concentration of 1 mg/mL, ready for conjugation. Created using Proteintech's proprietary in-house recombinant technology. Recombinant production enables unrivalled batch-to-batch consistency, easy scale-up, and future security of supply.

This conjugation ready format makes antibodies ideal for use in many applications including: ELISAs, multiplex assays requiring matched pairs, mass cytometry, and multiplex imaging applications. Antibody use should be optimized by the end user for each application and assay.

## Storage

Storage:

Store at -80°C.

Storage Buffer:

PBS Only

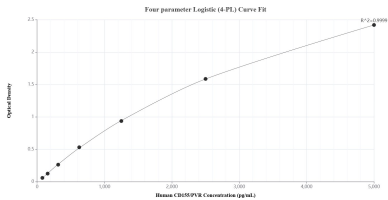
For technical support and original validation data for this product please contact:

T: 1 (888) 4PTGLAB (1-888-478-4522) (toll free in USA), or 1(312) 455-8498 (outside USA)

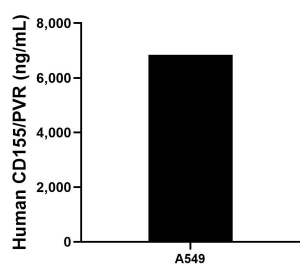
E: [proteintech@ptglab.com](mailto:proteintech@ptglab.com)  
W: [ptglab.com](http://ptglab.com)

This product is exclusively available under Proteintech Group brand and is not available to purchase from any other manufacturer.

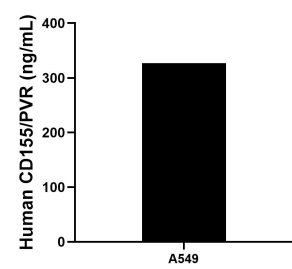
Selected Validation Data



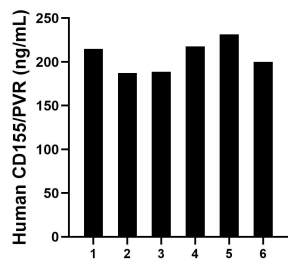
Sandwich ELISA standard curve of MP01053-4, Human CD155/PVR Recombinant Matched Antibody Pair - PBS only. 84138-6-PBS was coated to a plate as the capture antibody and incubated with serial dilutions of standard Eg0971. 84138-2-PBS was HRP conjugated as the detection antibody. Range: 78.1-5000 pg/mL



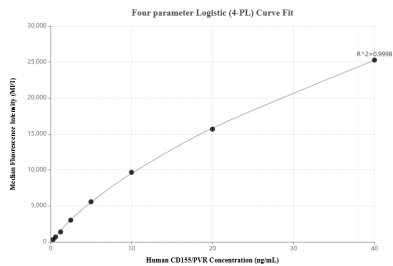
A549 were cultured in DMEM supplemented with 10% fetal bovine serum, 2.5 mM L-glutamine, 100 U/mL penicillin, and 100 µg/mL streptomycin sulfate. An aliquot of the cell culture supernate was removed, assayed for human CD155/PVR, and measured 6,841.2 pg/mL



The mean CD155/PVR concentration was determined to be 327.1 ng/mL in A549 cell extract based on a 2.5 mg/mL extract load.



Serum of six individual healthy human donors was measured. The CD155/PVR concentration of detected samples was determined to be 206.7 ng/mL with a range of 187.5-231.4 ng/mL



Cytometric bead array standard curve of MP01053-1, CD155/PVR Recombinant Matched Antibody Pair, PBS Only. Capture antibody: 84138-1-PBS. Detection antibody: 84138-2-PBS. Standard: Eg0971. Range: 0.313-40 ng/mL