

For Research Use Only

GLI2-Specific Recombinant antibody

Catalog Number: 84141-1-RR



Basic Information

Catalog Number: 84141-1-RR	GenBank Accession Number: NM_005270	Purification Method: Protein A purification
Size: 100ul , Concentration: 1000 ug/ml by Nanodrop;	GeneID (NCBI): 2736	CloneNo.: 241049C10
Source: Rabbit	UNIPROT ID: Q0VGT2	Recommended Dilutions: WB 1:5000-1:50000 IF/ICC 1:125-1:500
Isotype: IgG	Full Name: GLI family zinc finger 2	
	Calculated MW: 168 kDa	
	Observed MW: 80-90 kDa, 130-140 kDa, 160-180 kDa	

Applications

Tested Applications: WB, IF/ICC, ELISA	Positive Controls:
Species Specificity: human, mouse	WB : HeLa cells, SKOV-3 cells, HT-1080 cells, A549 cells, NIH/3T3 cells
	IF/ICC : HepG2 cells,

Background Information

GLI2, also named as THP, belongs to the GLI C2H2-type zinc-finger protein family. GLI2 play a role during embryogenesis. It binds to the DNA sequence 5'-GAACCACCCA-3' which is part of the TRE-2S regulatory element that augments the Tax-dependent enhancer of human T-cell leukemia virus type 1. It is implicated in the transduction of SHH signal. Mutation of GLI2 will cause of holoprosencephaly type 9 (HPE9). Four possible isoforms (hGli2a, b, g, and d) are formed by combinations of two independent alternative splittings, and all the isoforms could bind to a DNA motif, TRE2S. hGli2 a, b, g, and d. These isoforms encode 133-, 131-, 88-, and 86-kDa proteins, respectively.

Storage

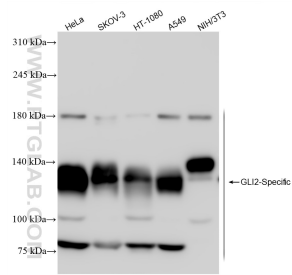
Storage:
Store at -20°C. Stable for one year after shipment.
Storage Buffer:
PBS with 0.02% sodium azide and 50% glycerol pH 7.3.
Aliquoting is unnecessary for -20°C storage

*** 20ul sizes contain 0.1% BSA

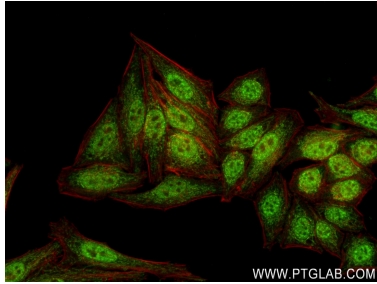
For technical support and original validation data for this product please contact:
T: 1 (888) 4PTGLAB (1-888-478-4522) (toll free in USA), or 1(312) 455-8498 (outside USA)
E: proteintech@ptglab.com
W: ptglab.com

This product is exclusively available under Proteintech Group brand and is not available to purchase from any other manufacturer.

Selected Validation Data



Various lysates were subjected to SDS PAGE followed by western blot with 84141-1-RR (GLI2-Specific antibody) at dilution of 1:10000 incubated at room temperature for 1.5 hours.



Immunofluorescent analysis of (4% PFA) fixed HepG2 cells using GLI2-Specific antibody (84141-1-RR, Clone: 241049C10) at dilution of 1:250 and CoraLite®488-Conjugated AffiniPure Goat Anti-Rabbit IgG(H+L) (SA00013-2), CL594-Phalloidin (red).