

For Research Use Only

# CDC25A Recombinant antibody

Catalog Number: 84145-1-RR



## Basic Information

Catalog Number:

84145-1-RR

Size:

100ul, Concentration: 1000 ug/ml by 993

Nanodrop;

Source:

Rabbit

Isotype:

IgG

GenBank Accession Number:

NM\_001789

GeneID (NCBI):

993

UNIPROT ID:

P30304

Full Name:

cell division cycle 25 homolog A (S. pombe)

Calculated MW:

59 kDa

Observed MW:

60-65 kDa

Purification Method:

Protein A purification

CloneNo.:

240813F11

Recommended Dilutions:

WB 1:500-1:2000

## Applications

Tested Applications:

WB, ELISA

Species Specificity:

human, rat

Positive Controls:

WB : HeLa cells, HepG2 cells, Jurkat cells, rat liver tissue

## Background Information

CDC25A belongs to the MPI phosphatase family. It is a tyrosine protein phosphatase which functions as a dosage-dependent inducer of mitotic progression. CDC25A directly dephosphorylates CDC2 and stimulates its kinase activity. It also dephosphorylates CDK2 in complex with cyclin E, in vitro. CDC25A overexpression in human cancers might contribute to tumorigenesis. This protein can be phosphorylated to reveal the molecular weight from 55 kDa to 70 kDa (PMID:21376736; 8156993). The antibody is specific to CDC25A.

## Storage

Storage:

Store at -20°C. Stable for one year after shipment.

Storage Buffer:

PBS with 0.02% sodium azide and 50% glycerol, pH7.3

Aliquoting is unnecessary for -20°C storage

\*\*\* 20ul sizes contain 0.1% BSA

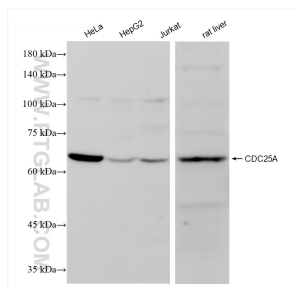
For technical support and original validation data for this product please contact:

T: 1 (888) 4PTGLAB (1-888-478-4522) (toll free in USA), or 1(312) 455-8498 (outside USA)

E: proteintech@ptglab.com  
W: ptglab.com

This product is exclusively available under Proteintech Group brand and is not available to purchase from any other manufacturer.

## Selected Validation Data



Various lysates were subjected to SDS PAGE followed by western blot with 84145-1-RR (CDC25A antibody) at dilution of 1:1000 incubated at room temperature for 1.5 hours.