

For Research Use Only

ATG4C Recombinant antibody

Catalog Number: 84146-1-RR



Basic Information

Catalog Number: 84146-1-RR	GenBank Accession Number: BC033024	Purification Method: Protein A purification
Size: 100ul , Concentration: 1000 ug/ml by Nanodrop;	GeneID (NCBI): 84938	CloneNo.: 230359A4
Source: Rabbit	UNIPROT ID: Q96DT6	Recommended Dilutions: WB 1:500-1:2000
Isotype: IgG	Full Name: ATG4 autophagy related 4 homolog C (S. cerevisiae)	
Immunogen Catalog Number: AG14207	Calculated MW: 458 aa, 52 kDa	
	Observed MW: 52-55 kDa	

Applications

Tested Applications: WB, ELISA	Positive Controls:
Species Specificity: human	WB : HEK-293 cells, K-562 cells, Jurkat cells

Background Information

Autophagy related 4C cysteine peptidase (ATG4C) is an autophagy regulator responsible for cleaving of pro-LC3 and delipidation of LC3 II.

Storage

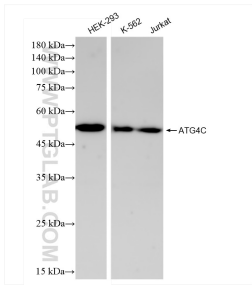
Storage:
Store at -20°C. Stable for one year after shipment.
Storage Buffer:
PBS with 0.02% sodium azide and 50% glycerol pH 7.3.
Aliquoting is unnecessary for -20°C storage

*** 20ul sizes contain 0.1% BSA

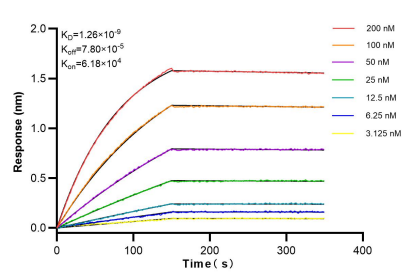
For technical support and original validation data for this product please contact:
T: 1 (888) 4PTGLAB (1-888-478-4522) (toll free in USA), or 1(312) 455-8498 (outside USA)
E: proteintech@ptglab.com
W: ptglab.com

This product is exclusively available under Proteintech Group brand and is not available to purchase from any other manufacturer.

Selected Validation Data



Various lysates were subjected to SDS PAGE followed by western blot with 84146-1-RR (ATG4C antibody) at dilution of 1:1000 incubated at room temperature for 1.5 hours.



Biolayer interferometry (BLI) kinetic assays of 84146-1-RR against Human ATG4C were performed. The affinity constant is 1.26 nM.