

For Research Use Only

ARHGEF11 Recombinant antibody, PBS Only (Detector)

Catalog Number: 84149-1-PBS



Basic Information

Catalog Number: 84149-1-PBS	GenBank Accession Number: GeneID (NCBI): 9826	Purification Method: Protein A purification
Size: 100ug, Concentration: 1 mg/ml by Nanodrop;	UNIPROT ID: O15085	CloneNo.: 241427A4
Source: Rabbit	Full Name: Rho guanine nucleotide exchange factor (GEF) 11	
Isotype: IgG	Calculated MW: 168 kDa	
Immunogen Catalog Number: AG33104		

Applications

Tested Applications:
IHC, IF/ICC, Cytometric bead array, Sandwich ELISA, Indirect ELISA, Sample test

Species Specificity:
human

Product Information

84149-1-PBS targets ARHGEF11 as part of a matched antibody pair:

MP01063-1: 84149-2-PBS capture and 84149-1-PBS detection (validated in Cytometric bead array)

MP01063-2: 84149-3-PBS capture and 84149-1-PBS detection (validated in Cytometric bead array, Sandwich ELISA)

Unconjugated rabbit recombinant monoclonal antibody in PBS only (BSA and azide free) storage buffer at a concentration of 1 mg/mL, ready for conjugation. Created using Proteintech's proprietary in-house recombinant technology. Recombinant production enables unrivalled batch-to-batch consistency, easy scale-up, and future security of supply.

This conjugation ready format makes antibodies ideal for use in many applications including: ELISAs, multiplex assays requiring matched pairs, mass cytometry, and multiplex imaging applications. Antibody use should be optimized by the end user for each application and assay.

Background Information

ARHGEF11 (Rho Guanine Nucleotide Exchange Factor 11), also known as PDZ-RhoGEF or GTRAP48. ARHGEF11 contains several functional domains, including a PDZ domain and a RhoGEF domain. The PDZ domain allows it to interact with various proteins, such as ZO-1 and plexins, while the RhoGEF domain enables it to activate Rho GTPases. ARHGEF11 is a multifunctional protein that plays crucial roles in cell adhesion, signal transduction, and development. Its dysregulation has been linked to several diseases, making it an important area of research for potential therapeutic applications.

Storage

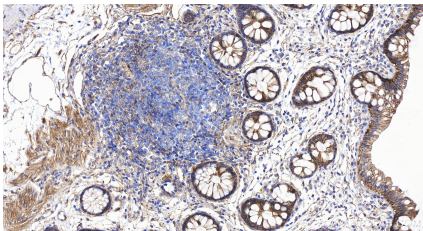
Storage:
Store at -80°C.

Storage Buffer:
PBS only, pH7.3

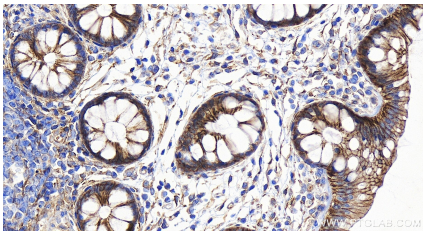
For technical support and original validation data for this product please contact:
T: 1 (888) 4PTGLAB (1-888-478-4522) (toll free in USA), or 1(312) 455-8498 (outside USA)
E: proteintech@ptglab.com
W: ptglab.com

This product is exclusively available under Proteintech Group brand and is not available to purchase from any other manufacturer.

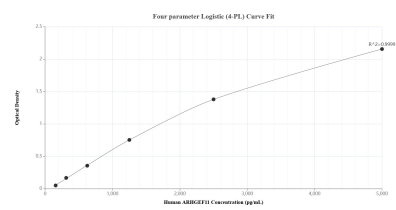
Selected Validation Data



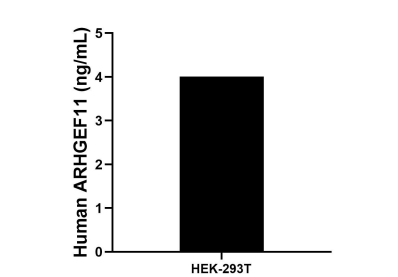
Immunohistochemical analysis of paraffin-embedded human colon tissue slide using 84149-1-RR (ARHGEF11 antibody) at dilution of 1:500 (under 20x lens). Heat mediated antigen retrieval with Tris-EDTA buffer (pH 9.0). This data was developed using the same antibody clone with 84149-1-PBS in a different storage buffer formulation.



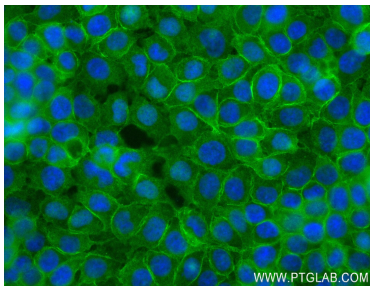
Immunohistochemical analysis of paraffin-embedded human colon tissue slide using 84149-1-RR (ARHGEF11 antibody) at dilution of 1:500 (under 20x lens). Heat mediated antigen retrieval with Tris-EDTA buffer (pH 9.0). This data was developed using the same antibody clone with 84149-1-PBS in a different storage buffer formulation.



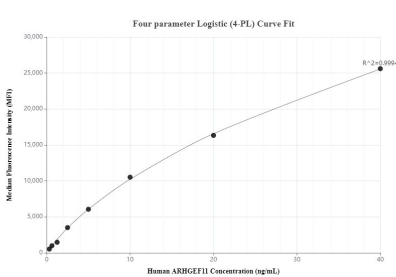
Sandwich ELISA standard curve of MP01063-2, Human ARHGEF11 Recombinant Matched Antibody Pair - PBS only. 84149-3-PBS was coated to a plate as the capture antibody and incubated with serial dilutions of standard Ag33104. 84149-1-PBS was HRP conjugated as the detection antibody. Range: 156-5000 pg/mL



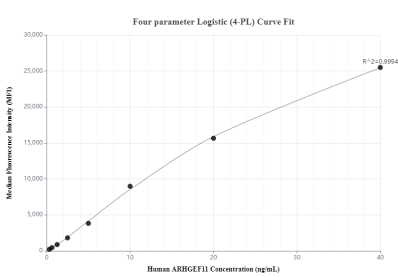
The mean ARHGEF11 concentration was determined to be 4.0 ng/mL in HEK-293T cell extract based on a 3.2 mg/mL extract load.



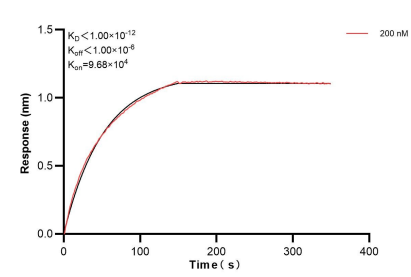
Immunofluorescent analysis of (4% PFA) fixed Huh-7 cells using ARHGEF11 antibody (84149-1-RR, Clone: 241427A4) at dilution of 1:250 and Coralite® 488-Conjugated Goat Anti-Rabbit IgG(H+L) (SA00013-2). This data was developed using the same antibody clone with 84149-1-PBS in a different storage buffer formulation.



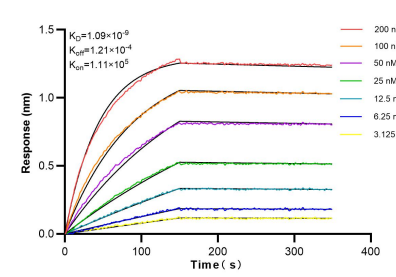
Cytometric bead array standard curve of MP01063-1, ARHGEF11 Recombinant Matched Antibody Pair, PBS Only. Capture antibody: 84149-2-PBS. Detection antibody: 84149-1-PBS. Standard: Ag33104. Range: 0.313-40 ng/mL



Cytometric bead array standard curve of MP01063-2, ARHGEF11 Recombinant Matched Antibody Pair, PBS Only. Capture antibody: 84149-3-PBS. Detection antibody: 84149-1-PBS. Standard: Ag33104. Range: 0.313-40 ng/mL



Biolayer interferometry (BLI) kinetic assay of 84149-1-PBS against Human ARHGEF11 was performed. The affinity constant is below 1 pM.



Biolayer interferometry (BLI) kinetic assays of 84149-1-RR against Human ARHGEF11 were performed. The affinity constant is 1.09 nM.