

For Research Use Only

# ARHGEF11 Recombinant antibody

Catalog Number: 84149-1-RR



## Basic Information

<b>Catalog Number:</b> 84149-1-RR	<b>GenBank Accession Number:</b> GeneID (NCBI): 9826	<b>Purification Method:</b> Protein A purification
<b>Size:</b> 100ul , Concentration: 1000 µg/ml by Nanodrop;	<b>UNIPROT ID:</b> O15085	<b>CloneNo.:</b> 241427A4
<b>Source:</b> Rabbit	<b>Full Name:</b> Rho guanine nucleotide exchange factor (GEF) 11	<b>Recommended Dilutions:</b> IHC 1:250-1:1000 IF/ICC 1:125-1:500
<b>Isotype:</b> IgG	<b>Calculated MW:</b> 168 kDa	
<b>Immunogen Catalog Number:</b> AG33104		

## Applications

<b>Tested Applications:</b> IHC, IF/ICC, ELISA	<b>Positive Controls:</b> IHC : human colon tissue, IF/ICC : HuH-7 cells,
<b>Species Specificity:</b> human	
<b>Note-IHC: suggested antigen retrieval with <i>TE buffer pH 9.0</i>; (*) Alternatively, antigen retrieval may be performed with <i>citrate buffer pH 6.0</i></b>	

## Background Information

ARHGEF11 (Rho Guanine Nucleotide Exchange Factor 11), also known as PDZ-RhoGEF or GTRAP48. ARHGEF11 contains several functional domains, including a PDZ domain and a RhoGEF domain. The PDZ domain allows it to interact with various proteins, such as ZO-1 and plexins, while the RhoGEF domain enables it to activate Rho GTPases. ARHGEF11 is a multifunctional protein that plays crucial roles in cell adhesion, signal transduction, and development. Its dysregulation has been linked to several diseases, making it an important area of research for potential therapeutic applications.

## Storage

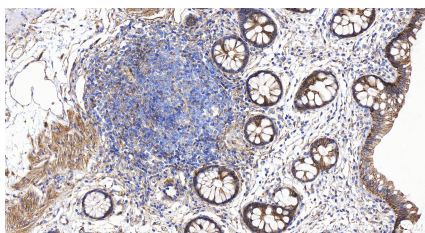
**Storage:**  
Store at -20°C. Stable for one year after shipment.  
**Storage Buffer:**  
PBS with 0.02% sodium azide and 50% glycerol, pH7.3  
Aliquoting is unnecessary for -20°C storage

\*\*\* 20ul sizes contain 0.1%BSA

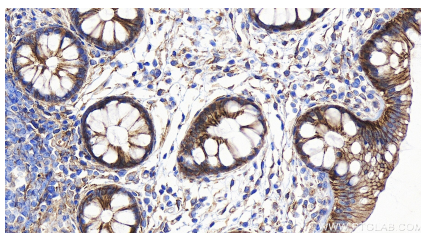
For technical support and original validation data for this product please contact:  
T: 1 (888) 4PTGLAB (1-888-478-4522) (toll free in USA), or 1(312) 455-8498 (outside USA)  
E: [proteintech@ptglab.com](mailto:proteintech@ptglab.com)  
W: [ptglab.com](http://ptglab.com)

This product is exclusively available under Proteintech Group brand and is not available to purchase from any other manufacturer.

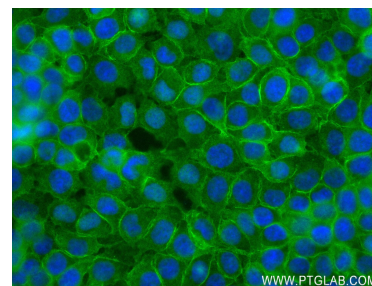
## Selected Validation Data



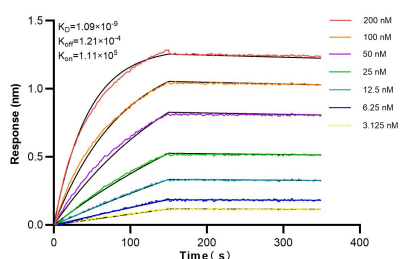
Immunohistochemical analysis of paraffin-embedded human colon tissue slide using 84149-1-RR (ARHGEF11 antibody) at dilution of 1:500 (under 20x lens). Heat mediated antigen retrieval with Tris-EDTA buffer (pH 9.0).



Immunohistochemical analysis of paraffin-embedded human colon tissue slide using 84149-1-RR (ARHGEF11 antibody) at dilution of 1:500 (under 20x lens). Heat mediated antigen retrieval with Tris-EDTA buffer (pH 9.0).



Immunofluorescent analysis of (4% PFA) fixed HuH-7 cells using ARHGEF11 antibody (84149-1-RR, Clone: 241427A4) at dilution of 1:250 and CoraLite®488-Conjugated Goat Anti-Rabbit IgG(H+L) (SA00013-2).



Biolayer interferometry (BLI) kinetic assays of 84149-1-RR against Human ARHGEF11 were performed. The affinity constant is 1.09 nM.