

For Research Use Only

ARHGEF11 Recombinant antibody, PBS Only (Capture)

Catalog Number: 84149-4-PBS



Basic Information

Catalog Number: 84149-4-PBS	GenBank Accession Number: GeneID (NCBI): 9826	Purification Method: Protein A purification
Size: 100ug , Concentration: 1 mg/ml by Nanodrop;	UNIPROT ID: O15085	CloneNo.: 241427G2
Source: Rabbit	Full Name: Rho guanine nucleotide exchange factor (GEF) 11	
Isotype: IgG	Calculated MW: 168 kDa	
Immunogen Catalog Number: AG33104	Observed MW: 220 kDa	

Applications

Tested Applications:
WB, Cytometric bead array, Indirect ELISA

Species Specificity:
human

Product Information

84149-4-PBS targets ARHGEF11 as part of a matched antibody pair:

MP01063-3: 84149-4-PBS capture and 84149-2-PBS detection (validated in Cytometric bead array)

Unconjugated rabbit recombinant monoclonal antibody in PBS only (BSA and azide free) storage buffer at a concentration of 1 mg/mL, ready for conjugation. Created using Proteintech's proprietary in-house recombinant technology. Recombinant production enables unrivalled batch-to-batch consistency, easy scale-up, and future security of supply.

This conjugation ready format makes antibodies ideal for use in many applications including: ELISAs, multiplex assays requiring matched pairs, mass cytometry, and multiplex imaging applications. Antibody use should be optimized by the end user for each application and assay.

Background Information

ARHGEF11 (Rho guanine nucleotide exchange factor 11) is a specific guanine nucleotide exchange factor (GEF) for RhoA, which is a critical regulator of actin cytoskeleton dynamics and organization of dendritic spines and inhibitor of spine maintenance (PMID: 28036092). ARHGEF11 has been proven to promote tumor metastasis in glioblastoma and ovarian carcinoma (PMID: 33122451).

Storage

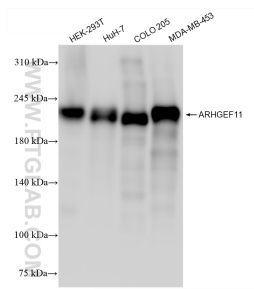
Storage:
Store at -80°C.

Storage Buffer:
PBS Only

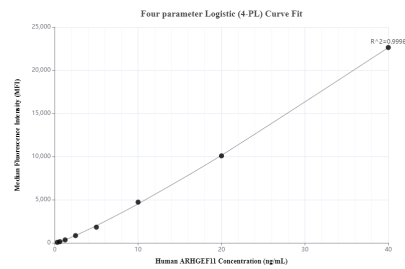
For technical support and original validation data for this product please contact:
T: 1 (888) 4PTGLAB (1-888-478-4522) (toll free in USA), or 1(312) 455-8498 (outside USA)
E: proteintech@ptglab.com
W: ptglab.com

This product is exclusively available under Proteintech Group brand and is not available to purchase from any other manufacturer.

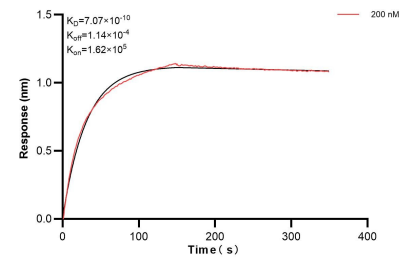
Selected Validation Data



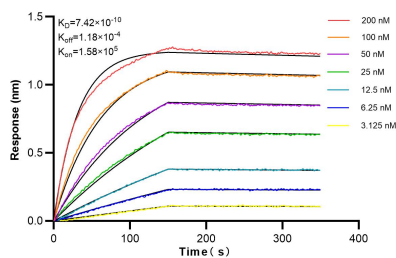
Various lysates were subjected to SDS PAGE followed by western blot with 84149-4-RR (ARHGEF11 antibody) at dilution of 1:8000 incubated at room temperature for 1.5 hours. This data was developed using the same antibody clone with 84149-4-PBS in a different storage buffer formulation.



Cytometric bead array standard curve of MP01063-3, ARHGEF11 Recombinant Matched Antibody Pair, PBS Only. Capture antibody: 84149-4-PBS. Detection antibody: 84149-2-PBS. Standard: Ag33104. Range: 0.313-40 ng/mL.



Biolayer interferometry (BLI) kinetic assay of 84149-4-PBS against Human ARHGEF11 was performed. The affinity constant is 0.707 nM.



Biolayer interferometry (BLI) kinetic assays of 84149-4-RR against Human ARHGEF11 were performed. The affinity constant is 0.742 nM.