

For Research Use Only

UCH-L1/PGP9.5 Recombinant antibody, PBS Only (Capture)

Catalog Number: 84154-2-PBS



Basic Information

Catalog Number: 84154-2-PBS	GenBank Accession Number: BC000332	Purification Method: Protein A purification
Size: 100ug , Concentration: 1 mg/ml by Nanodrop;	GeneID (NCBI): 7345	CloneNo.: 241107C5
Source: Rabbit	UNIPROT ID: P09936	
Isotype: IgG	Full Name: ubiquitin carboxyl-terminal esterase L1 (ubiquitin thiolesterase)	
Immunogen Catalog Number: AG6490	Calculated MW: 25 kDa	

Applications

Tested Applications:
Cytometric bead array, Sandwich ELISA, Indirect ELISA,
Sample test

Species Specificity:
human

Product Information

84154-2-PBS targets UCH-L1/PGP9.5 as part of a matched antibody pair:

MP01079-1: 84154-2-PBS capture and 84154-1-PBS detection (validated in Cytometric bead array)

MP01079-2: 84154-2-PBS capture and 84154-3-PBS detection (validated in Cytometric bead array, Sandwich ELISA)

Unconjugated rabbit recombinant monoclonal antibody in PBS only (BSA and azide free) storage buffer at a concentration of 1 mg/mL, ready for conjugation. Created using Proteintech's proprietary in-house recombinant technology. Recombinant production enables unrivalled batch-to-batch consistency, easy scale-up, and future security of supply.

This conjugation ready format makes antibodies ideal for use in many applications including: ELISAs, multiplex assays requiring matched pairs, mass cytometry, and multiplex imaging applications. Antibody use should be optimized by the end user for each application and assay.

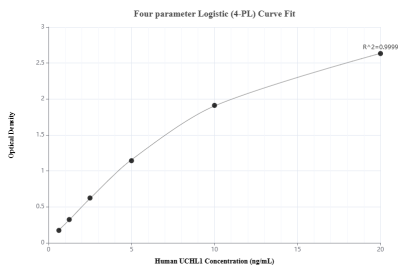
Storage

Storage:
Store at -80°C.
Storage Buffer:
PBS Only

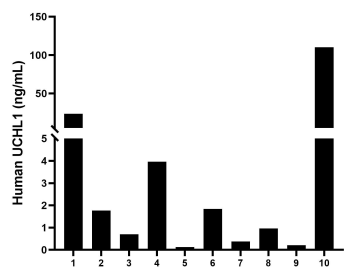
For technical support and original validation data for this product please contact:
T: 1 (888) 4PTGLAB (1-888-478-4522) (toll free in USA), or 1(312) 455-8498 (outside USA)
E: proteintech@ptglab.com
W: ptglab.com

This product is exclusively available under Proteintech Group brand and is not available to purchase from any other manufacturer.

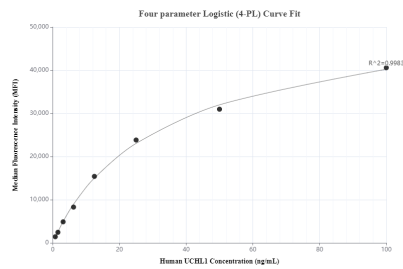
Selected Validation Data



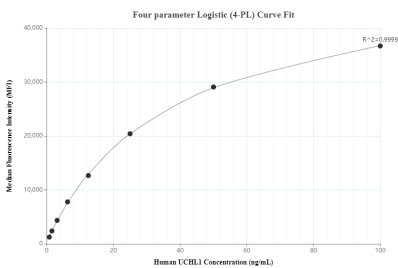
Sandwich ELISA standard curve of MP01079-2, Human UCH-L1/PGP9.5 Recombinant Matched Antibody Pair - PBS only. 84154-2-PBS was coated to a plate as the capture antibody and incubated with serial dilutions of standard Ag6490. 84154-3-PBS was HRP conjugated as the detection antibody. Range: 0.625-20 ng/mL



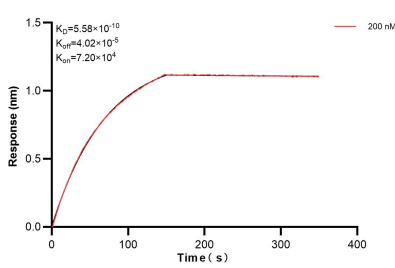
Serum of ten individual healthy human donors was measured. The human UCH-L1/PGP9.5 concentration of detected samples was determined to be 8.99 ng/mL with a range of 0.13 - 110.20 ng/mL



Cytometric bead array standard curve of MP01079-1, UCH-L1/PGP9.5 Recombinant Matched Antibody Pair, PBS Only. Capture antibody: 84154-2-PBS. Detection antibody: 84154-1-PBS. Standard: Ag6490. Range: 0.781-100 ng/mL



Cytometric bead array standard curve of MP01079-2, UCH-L1/PGP9.5 Recombinant Matched Antibody Pair, PBS Only. Capture antibody: 84154-2-PBS. Detection antibody: 84154-3-PBS. Standard: Ag6490. Range: 0.781-100 ng/mL



Bi-layer interferometry (BLI) kinetic assay of 84154-2-PBS against Human UCH-L1/PGP9.5 was performed. The affinity constant is 0.558 nM.