

For Research Use Only

UCH-L1/PGP9.5 Recombinant antibody, PBS Only

Catalog Number: 84154-4-PBS



Basic Information

Catalog Number:

84154-4-PBS

Size:

100ug , Concentration: 1 mg/ml by
Nanodrop;

Source:

Rabbit

Isotype:

IgG

Immunogen Catalog Number:

AG6490

GenBank Accession Number:

BC000332

GeneID (NCBI):

7345

UNIPROT ID:

P09936

Full Name:

ubiquitin carboxyl-terminal esterase
L1 (ubiquitin thiolesterase)

Calculated MW:

25 kDa

Observed MW:

27 kDa

Purification Method:

Protein A purification

CloneNo.:

241107B2

Applications

Tested Applications:

WB, IHC, IF-P, Indirect ELISA

Species Specificity:

human, mouse, rat

Background Information

UCHL1(Ubiquitin carboxyl-terminal hydrolase isozyme L1) is a member of a gene family whose products hydrolyze small C-terminal adducts of ubiquitin to generate the ubiquitin monomer. Expression of UCHL1 is highly specific to neurons and to cells of the diffuse neuroendocrine system and their tumors. It is present in all neurons(PMID: 6343558). This protein is present in brain at concentrations at least 50 times greater than in other organs and is a major protein component of neuronal cytoplasm (PMID:7217993). And UCHL1 is a Parkinson's disease susceptibility gene (PMID:15048890).

Storage

Storage:

Store at -80°C.

Storage Buffer:

PBS Only

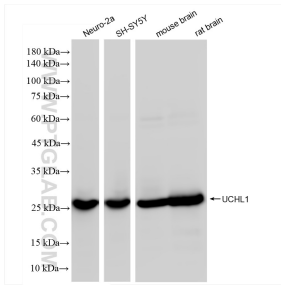
For technical support and original validation data for this product please contact:

T: 1 (888) 4PTGLAB (1-888-478-4522) (toll free
in USA), or 1(312) 455-8498 (outside USA)

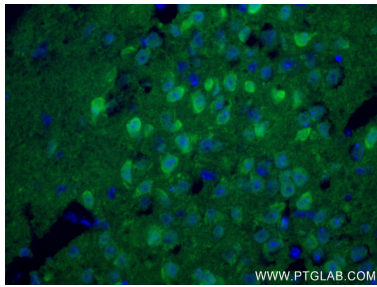
E: proteintech@ptglab.com
W: ptglab.com

This product is exclusively available under Proteintech Group brand and is not available to purchase from any other manufacturer.

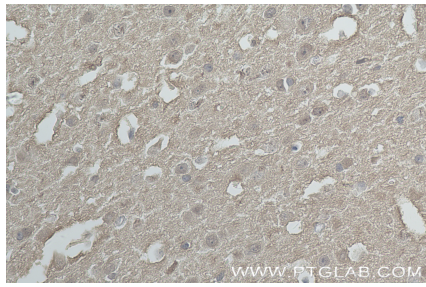
Selected Validation Data



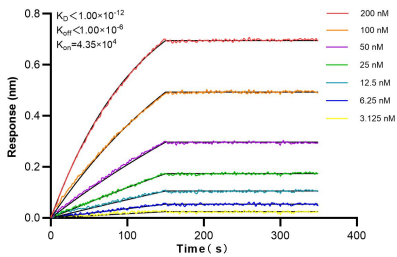
Various lysates were subjected to SDS PAGE followed by western blot with 84154-4-RR (UCHL1 antibody) at dilution of 1:20000 incubated at room temperature for 1.5 hours. This data was developed using the same antibody clone with 84154-4-PBS in a different storage buffer formulation.



Immunofluorescent analysis of (4% PFA) fixed mouse brain tissue using UCH-L1/PGP9.5 antibody (84154-4-RR, Clone: 241107B2) at dilution of 1:250 and CoraLite®488-Conjugated Goat Anti-Rabbit IgG(H+L) (SA00013-2). This data was developed using the same antibody clone with 84154-4-PBS in a different storage buffer formulation.



Immunohistochemical analysis of paraffin-embedded mouse brain tissue slide using 84154-4-RR (UCH-L1/PGP9.5 antibody) at dilution of 1:200 (under 40x lens). Heat mediated antigen retrieval with . This data was developed using the same antibody clone with 84154-4-PBS in a different storage buffer formulation.



Biolayer interferometry (BLI) kinetic assays of 84154-4-RR against Human UCHL1/PGP9.5 were performed. The affinity constant is below 1 pM.