

For Research Use Only

# UCH-L1/PGP9.5 Recombinant antibody, PBS Only

Catalog Number: 84154-5-PBS



## Basic Information

<b>Catalog Number:</b> 84154-5-PBS	<b>GenBank Accession Number:</b> BC000332	<b>Purification Method:</b> Protein A purification
<b>Size:</b> 100ug, Concentration: 1000 µg/ml by Nanodrop;	<b>GeneID (NCBI):</b> 7345	<b>CloneNo.:</b> 241107B3
<b>Source:</b> Rabbit	<b>UNIPROT ID:</b> P09936	
<b>Isotype:</b> IgG	<b>Full Name:</b> ubiquitin carboxyl-terminal esterase L1 (ubiquitin thiolesterase)	
<b>Immunogen Catalog Number:</b> AG6490	<b>Calculated MW:</b> 25 kDa	
	<b>Observed MW:</b> 27 kDa	

## Applications

**Tested Applications:**  
WB, IF-P, Indirect ELISA

**Species Specificity:**  
human, mouse, rat

## Background Information

UCHL1(Ubiquitin carboxyl-terminal hydrolase isozyme L1) is a member of a gene family whose products hydrolyze small C-terminal adducts of ubiquitin to generate the ubiquitin monomer. Expression of UCHL1 is highly specific to neurons and to cells of the diffuse neuroendocrine system and their tumors. It is present in all neurons(PMID: 6343558). This protein is present in brain at concentrations at least 50 times greater than in other organs and is a major protein component of neuronal cytoplasm (PMID:7217993). And UCHL1 is a Parkinson's disease susceptibility gene (PMID:15048890).

## Storage

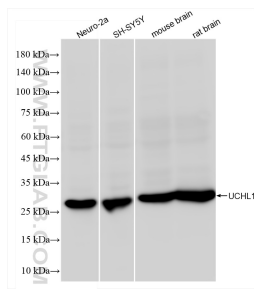
**Storage:**  
Store at -80°C.

**Storage Buffer:**  
PBS Only

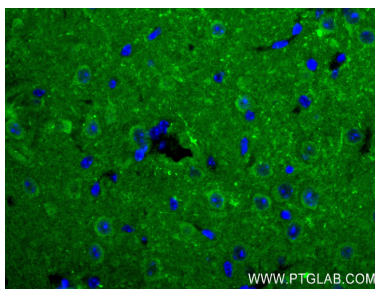
For technical support and original validation data for this product please contact:  
T: 1 (888) 4PTGLAB (1-888-478-4522) (toll free in USA), or 1(312) 455-8498 (outside USA)  
E: [proteintech@ptglab.com](mailto:proteintech@ptglab.com)  
W: [ptglab.com](http://ptglab.com)

This product is exclusively available under Proteintech Group brand and is not available to purchase from any other manufacturer.

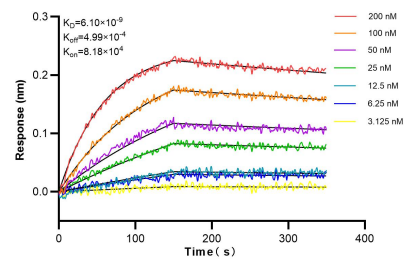
## Selected Validation Data



Various lysates were subjected to SDS PAGE followed by western blot with 84154-5-RR (UCHL1 antibody) at dilution of 1:2000 incubated at room temperature for 1.5 hours. This data was developed using the same antibody clone with 84154-5-PBS in a different storage buffer formulation.



Immunofluorescent analysis of (4% PFA) fixed mouse brain tissue using UCH-L1/PGP9.5 antibody (84154-5-RR, Clone: 241107B3 ) at dilution of 1:200 and CoraLite® 488-Conjugated Goat Anti-Rabbit IgG(H+L) (SA00013-2). This data was developed using the same antibody clone with 84154-5-PBS in a different storage buffer formulation.



Biolayer interferometry (BLI) kinetic assays of 84154-5-RR against Human UCH-L1/PGP9.5 were performed. The affinity constant is 6.10 nM.