

For Research Use Only

UCH-L1/PGP9.5 Recombinant antibody

Catalog Number: 84154-5-RR



Basic Information

Catalog Number:

84154-5-RR

Size:

100ul, Concentration: 400 µg/ml by Nanodrop;

Source:

Rabbit

Isotype:

IgG

Immunogen Catalog Number:

AG6490

GenBank Accession Number:

BC000332

GeneID (NCBI):

7345

UNIPROT ID:

P09936

Full Name:

ubiquitin carboxyl-terminal esterase L1 (ubiquitin thiolesterase)

Calculated MW:

25 kDa

Observed MW:

27 kDa

Purification Method:

Protein A purification

CloneNo.:

241107B3

Recommended Dilutions:

WB 1:1000-1:4000

IF-P 1:50-1:500

Applications

Tested Applications:

WB, IF-P, ELISA

Species Specificity:

human, mouse, rat

Positive Controls:

WB : Neuro-2a cells, SH-SY5Y cells, mouse brain tissue, rat brain tissue

IF-P : mouse brain tissue,

Background Information

UCHL1 (Ubiquitin carboxyl-terminal hydrolase isozyme L1) is a member of a gene family whose products hydrolyze small C-terminal adducts of ubiquitin to generate the ubiquitin monomer. Expression of UCHL1 is highly specific to neurons and to cells of the diffuse neuroendocrine system and their tumors. It is present in all neurons (PMID: 6343558). This protein is present in brain at concentrations at least 50 times greater than in other organs and is a major protein component of neuronal cytoplasm (PMID: 7217993). And UCHL1 is a Parkinson's disease susceptibility gene (PMID: 15048890).

Storage

Storage:

Store at -20°C. Stable for one year after shipment.

Storage Buffer:

PBS with 0.02% sodium azide and 50% glycerol pH 7.3.

Aliquoting is unnecessary for -20°C storage

*** 20ul sizes contain 0.1% BSA

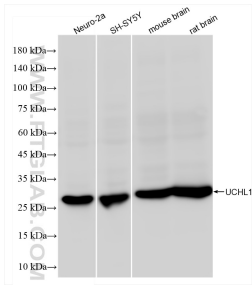
For technical support and original validation data for this product please contact:

T: 1 (888) 4PTGLAB (1-888-478-4522) (toll free in USA), or 1(312) 455-8498 (outside USA)

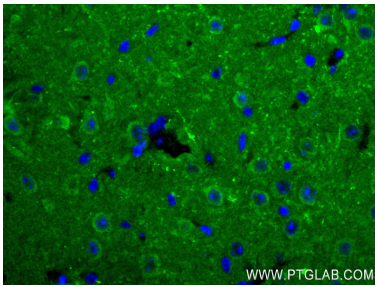
E: proteintech@ptglab.com
W: ptglab.com

This product is exclusively available under Proteintech Group brand and is not available to purchase from any other manufacturer.

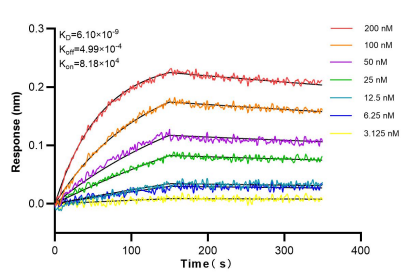
Selected Validation Data



Various lysates were subjected to SDS PAGE followed by western blot with 84154-5-RR (UCHL1 antibody) at dilution of 1:2000 incubated at room temperature for 1.5 hours.



Immunofluorescent analysis of (4% PFA) fixed mouse brain tissue using UCH-L1/PGP9.5 antibody (84154-5-RR, Clone: 241107B3) at dilution of 1:200 and CoraLite®488-Conjugated Goat Anti-Rabbit IgG(H+L) (SA00013-2).



Biolayer interferometry (BLI) kinetic assays of 84154-5-RR against Human UCH-L1/PGP9.5 were performed. The affinity constant is 6.10 nM.