

For Research Use Only

# PPP2CA Recombinant antibody, PBS Only (Capture)

Catalog Number: 84155-2-PBS



## Basic Information

<b>Catalog Number:</b> 84155-2-PBS	<b>GenBank Accession Number:</b> BC031696	<b>Purification Method:</b> Protein A purification
<b>Size:</b> 100ug , Concentration: 1 mg/ml by Nanodrop;	<b>GeneID (NCBI):</b> 5515	<b>CloneNo.:</b> 241112A6
<b>Source:</b> Rabbit	<b>UNIPROT ID:</b> P67775	
<b>Isotype:</b> IgG	<b>Full Name:</b> protein phosphatase 2 (formerly 2A), catalytic subunit, alpha isoform	
<b>Immunogen Catalog Number:</b> AG4294	<b>Calculated MW:</b> 309 aa, 36 kDa	
	<b>Observed MW:</b> 36 kDa	

## Applications

**Tested Applications:**  
WB, Cytometric bead array, Indirect ELISA

**Species Specificity:**  
human, mouse, rat, pig

## Product Information

84155-2-PBS targets PPP2CA as part of a matched antibody pair:

MP01058-2: 84155-2-PBS capture and 84155-4-PBS detection (validated in Cytometric bead array)

Unconjugated rabbit recombinant monoclonal antibody in PBS only (BSA and azide free) storage buffer at a concentration of 1 mg/mL, ready for conjugation. Created using Proteintech's proprietary in-house recombinant technology. Recombinant production enables unrivalled batch-to-batch consistency, easy scale-up, and future security of supply.

This conjugation ready format makes antibodies ideal for use in many applications including: ELISAs, multiplex assays requiring matched pairs, mass cytometry, and multiplex imaging applications. Antibody use should be optimized by the end user for each application and assay.

## Background Information

PPP2CA, also named as RP-C and PP2A-alpha, belongs to the PPP phosphatase family and PP-1 subfamily. PP2A can modulate the activity of phosphorylase B kinase casein kinase 2, mitogen-stimulated S6 kinase, and MAP-2 kinase. PP2A activity was modestly decreased in AML patients harboring C-KIT/WT. PP2A is a target for C-KIT/TKD and implicated the potential efficacy of therapies targeting PP2A in such AML in future.

## Storage

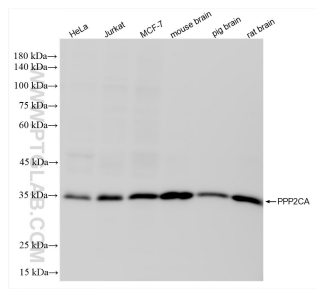
**Storage:**  
Store at -80°C.

**Storage Buffer:**  
PBS only, pH7.3

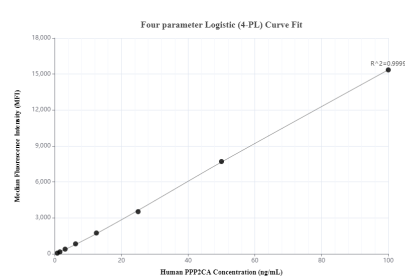
For technical support and original validation data for this product please contact:  
T: 1 (888) 4PTGLAB (1-888-478-4522) (toll free in USA), or 1(312) 455-8498 (outside USA)  
E: proteintech@ptglab.com  
W: ptglab.com

This product is exclusively available under Proteintech Group brand and is not available to purchase from any other manufacturer.

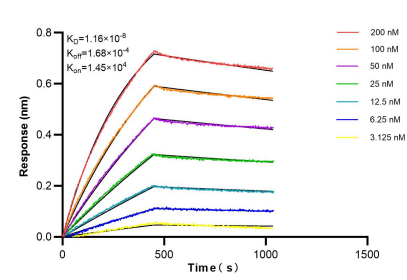
## Selected Validation Data



HeLa cells were subjected to SDS PAGE followed by western blot with 84155-2-RR (PPP2CA antibody) at dilution of 1:2000 incubated at room temperature for 1.5 hours. This data was developed using the same antibody clone with 84155-2-PBS in a different storage buffer formulation.



Cytometric bead array standard curve of MP01058-2, PPP2CA Recombinant Matched Antibody Pair, PBS Only. Capture antibody: 84155-2-PBS. Detection antibody: 84155-4-PBS. Standard: Ag4294. Range: 0.781-100 ng/mL.



Biolayer interferometry (BLI) kinetic assays of 84155-2-RR against Human PPP2CA were performed. The affinity constant is 11.6 nM.