

For Research Use Only

PPP2CA Recombinant antibody

Catalog Number: 84155-2-RR



Basic Information

Catalog Number:

84155-2-RR

Size:

100ul , Concentration: 1000 µg/ml by Nanodrop;

Source:

Rabbit

Isotype:

IgG

Immunogen Catalog Number:

AG4294

GenBank Accession Number:

BC031696

GeneID (NCBI):

5515

UNIPROT ID:

P67775

Full Name:

protein phosphatase 2 (formerly 2A), catalytic subunit, alpha isoform

Calculated MW:

309 aa, 36 kDa

Observed MW:

36 kDa

Purification Method:

Protein A purification

CloneNo.:

241112A6

Recommended Dilutions:

WB 1:1000-1:4000

Applications

Tested Applications:

WB, ELISA

Species Specificity:

human, mouse, rat, pig

Positive Controls:

WB : HeLa cells, Jurkat cells, MCF-7 cells, mouse brain tissue, pig brain tissue, rat brain tissue

Background Information

PPP2CA, also named as RP-C and PP2A-alpha, belongs to the PPP phosphatase family and PP-1 subfamily. PP2A can modulate the activity of phosphorylase B kinase casein kinase 2, mitogen-stimulated S6 kinase, and MAP-2 kinase. PP2A activity was modestly decreased in AML patients harboring C-KIT/WT. PP2A is a target for C-KIT/TKD and implicated the potential efficacy of therapies targeting PP2A in such AML in future.

Storage

Storage:

Store at -20°C. Stable for one year after shipment.

Storage Buffer:

PBS with 0.02% sodium azide and 50% glycerol, pH7.3

Aliquoting is unnecessary for -20°C storage

*** 20ul sizes contain 0.1% BSA

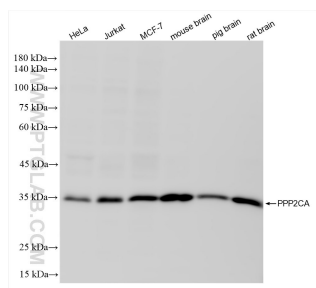
For technical support and original validation data for this product please contact:

T: 1 (888) 4PTGLAB (1-888-478-4522) (toll free in USA), or 1(312) 455-8498 (outside USA)

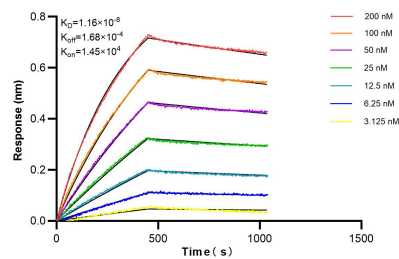
E: proteintech@ptglab.com
W: ptglab.com

This product is exclusively available under Proteintech Group brand and is not available to purchase from any other manufacturer.

Selected Validation Data



HeLa cells were subjected to SDS PAGE followed by western blot with 84155-2-RR (PPP2CA antibody) at dilution of 1:2000 incubated at room temperature for 1.5 hours.



Biolayer interferometry (BLI) kinetic assays of 84155-2-RR against Human PPP2CA were performed. The affinity constant is 11.6 nM.