

For Research Use Only

SYNGR1 Recombinant antibody, PBS Only

Catalog Number: 84161-3-PBS



Basic Information

Catalog Number: 84161-3-PBS	GenBank Accession Number: BC000731	Purification Method: Protein A purification
Size: 100ug , Concentration: 1 mg/ml by Nanodrop;	GeneID (NCBI): 9145	CloneNo.: 241460D1
Source: Rabbit	UNIPROT ID: O43759	
Isotype: IgG	Full Name: synaptogyrin 1	
Immunogen Catalog Number: AG0685	Calculated MW: 25 kDa	
	Observed MW: 30 kDa	

Applications

Tested Applications:
WB, IF-P, Indirect ELISA

Species Specificity:
human, mouse, rat, pig

Background Information

Synaptogyrins are one of the most abundant vesicle components and are involved in the regulation of neurotransmitter release and synaptic plasticity. Synaptogyrins comprise a family of tyrosine-phosphorylated proteins with three isoforms: two neuronal forms (synaptogyrin-1 and -3) and one ubiquitous form (synaptogyrin-2). The synaptogyrin 1 (SYNGR1) can act as a regulator of Ca²⁺-dependent exocytosis. SYNGR1 protein mutations are associated with schizophrenia and are considered to be positional candidate genes for schizophrenia.(PMID: 10383386; 10595519; 14755516; 14732601; 17049558)

Storage

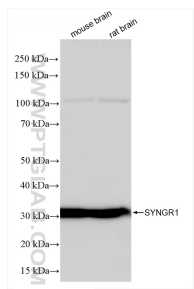
Storage:
Store at -80°C.

Storage Buffer:
PBS Only

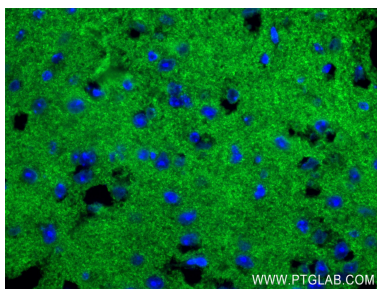
For technical support and original validation data for this product please contact:
T: 1 (888) 4PTGLAB (1-888-478-4522) (toll free in USA), or 1(312) 455-8498 (outside USA)
E: proteintech@ptglab.com
W: ptglab.com

This product is exclusively available under Proteintech Group brand and is not available to purchase from any other manufacturer.

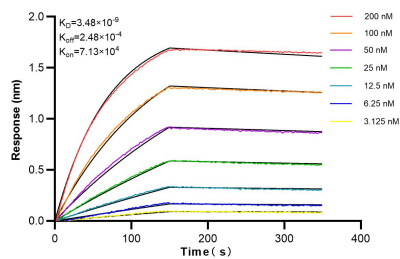
Selected Validation Data



Various lysates were subjected to SDS PAGE followed by western blot with 84161-3-RR (SYNGR1 antibody) at dilution of 1:10000 incubated at room temperature for 1.5 hours. This data was developed using the same antibody clone with 84161-3-PBS in a different storage buffer formulation.



Immunofluorescent analysis of (4% PFA) fixed mouse brain tissue using SYNGR1 antibody (84161-3-RR, Clone: 241460D1) at dilution of 1:200 and CoraLite®488-Conjugated Goat Anti-Rabbit IgG(H+L) (SA00013-2). This data was developed using the same antibody clone with 84161-3-PBS in a different storage buffer formulation.



Biolayer interferometry (BLI) kinetic assays of 84161-3-RR against Human SYNGR1 were performed. The affinity constant is 3.48 nM.