

For Research Use Only

# ARL4D Recombinant antibody, PBS Only

Catalog Number: 84163-3-PBS



## Basic Information

Catalog Number:

84163-3-PBS

Size:

100ug, Concentration: 1 mg/ml by Nanodrop;

Source:

Rabbit

Isotype:

IgG

Immunogen Catalog Number:

AG7369

GenBank Accession Number:

BC000043

GeneID (NCBI):

379

UNIPROT ID:

P49703

Full Name:

ADP-ribosylation factor-like 4D

Calculated MW:

22 kDa

Observed MW:

25-27 kDa

Purification Method:

Protein A purification

CloneNo.:

241503B7

## Applications

Tested Applications:

WB, Indirect ELISA

Species Specificity:

human

## Background Information

ARL4D (ADP-ribosylation factor-like protein 4D) is also named as ARF4L. ARL4D is a developmentally regulated member of the ADP-ribosylation factor/ARF-like protein (ARF/ARL) family of Ras-related GTPases. ARL4D interacts with the C-terminal pleckstrin homology (PH) and polybasic c domains of cytohesin-2/ARNO in a GTP-dependent manner. Localization of ARL4D at the plasma membrane is GTP- and N-terminal myristoylation-dependent. ARL4D(Q80L), a putative active form of ARL4D, induced accumulation of cytohesin-2/ARNO at the plasma membrane (PMID: 17804820).

## Storage

Storage:

Store at -80°C.

Storage Buffer:

PBS Only

For technical support and original validation data for this product please contact:

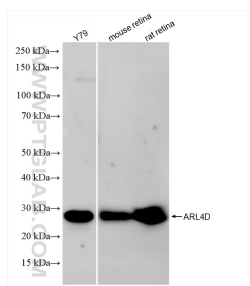
T: 1 (888) 4PTGLAB (1-888-478-4522) (toll free in USA), or 1(312) 455-8498 (outside USA)

E: [proteintech@ptglab.com](mailto:proteintech@ptglab.com)

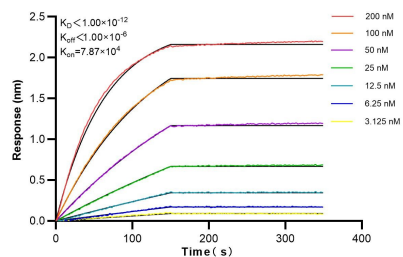
W: [ptglab.com](http://ptglab.com)

This product is exclusively available under Proteintech Group brand and is not available to purchase from any other manufacturer.

## Selected Validation Data



Various lysates were subjected to SDS PAGE followed by western blot with 84163-3-RR (ARL4D antibody) at dilution of 1:10000 incubated at room temperature for 1.5 hours. This data was developed using the same antibody clone with 84163-3-PBS in a different storage buffer formulation.



Biolayer interferometry (BLI) kinetic assays of 84163-3-RR against Human ARL4D were performed. The affinity constant is below 1 pM.