

For Research Use Only

GEMIN5 Recombinant antibody

Catalog Number: 84171-5-RR

Featured Product



Basic Information

Catalog Number:

84171-5-RR

Size:

100ul, Concentration: 1000 µg/ml by Nanodrop;

Source:

Rabbit

Isotype:

IgG

Immunogen Catalog Number:

AG19220

GenBank Accession Number:

BC113614

GeneID (NCBI):

25929

UNIPROT ID:

Q8TEQ6

Full Name:

gem (nuclear organelle) associated protein 5

Calculated MW:

1508 aa, 169 kDa

Observed MW:

168-180 kDa

Purification Method:

Protein A purification

CloneNo.:

241205G7

Recommended Dilutions:

WB 1:5000-1:50000

IF/ICC 1:125-1:500

Applications

Tested Applications:

WB, IF/ICC, FC (Intra), ELISA

Species Specificity:

human

Positive Controls:

WB : HEK-293 cells, HeLa cells, Jurkat cells, HepG2 cells, COLO 320 cells

IF/ICC : HeLa cells,

Background Information

GEMIN5 also named as Gem associated protein 5 is a 1508 amino-acid protein, which belongs to the WD repeat gemin-5 family. The molecular weight of GEMIN5 is 168 kDa. GEMIN5 is a component of SMN complex, which plays an essential role in spliceosomal snRNP assembly in the cytoplasm and is required for pre-mRNA splicing in the nucleus. GEMIN5 is identified as the factor that allows the SMN complex to distinguish snRNAs from other cellular RNAs for snRNP biogenesis. GEMIN5 is found in nucleoplasm, nuclear bodies and cytoplasm.

Storage

Storage:

Store at -20°C. Stable for one year after shipment.

Storage Buffer:

PBS with 0.02% sodium azide and 50% glycerol, pH7.3

Aliquoting is unnecessary for -20°C storage

*** 20ul sizes contain 0.1% BSA

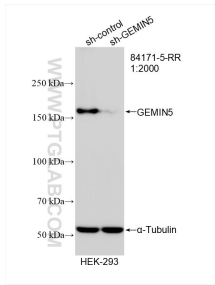
For technical support and original validation data for this product please contact:

T: 1 (888) 4PTGLAB (1-888-478-4522) (toll free in USA), or 1(312) 455-8498 (outside USA)

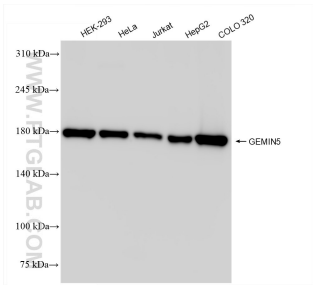
E: proteintech@ptglab.com
W: ptglab.com

This product is exclusively available under Proteintech Group brand and is not available to purchase from any other manufacturer.

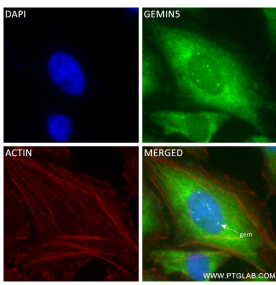
Selected Validation Data



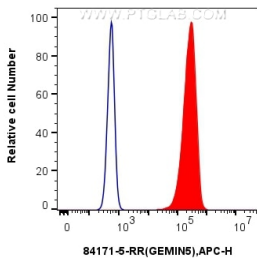
WB result of GEMIN5 antibody (84171-5-RR; 1:2000; incubated at room temperature for 1.5 hours) with sh-Control and sh-GEMIN5 transfected HEK-293 cells.



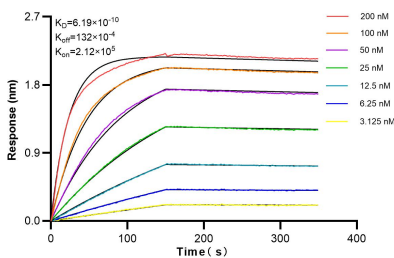
Various lysates were subjected to SDS PAGE followed by western blot with 84171-5-RR (GEMIN5 antibody) at dilution of 1:10000 incubated at room temperature for 1.5 hours.



Immunofluorescent analysis of (4% PFA) fixed HeLa cells using GEMIN5 antibody (84171-5-RR, Clone: 241205G7) at dilution of 1:250 and CoraLite®488-Conjugated Goat Anti-Rabbit IgG(H+L) (SA00013-2), CL594-Phalloidin (red).



1x10⁶ HEK-293 cells were intracellularly stained with 0.25 ug GEMIN5 Recombinant antibody (84171-5-RR, Clone:241205G7) and APC-Conjugated Goat Anti-Rabbit IgG(H+L)(red), or 0.25 ug Isotype Control (blue). Cells were fixed with 4% PFA and permeabilized with Flow Cytometry Perm Buffer (PF00011-C).



Bioluminescence resonance transfer (BLI) kinetic assays of 84171-5-RR against Human GEMIN5 were performed. The affinity constant is 0.619 nM.