

For Research Use Only

# Kininogen 1 Recombinant antibody, PBS Only (Capture)

Catalog Number: 84175-4-PBS



## Basic Information

<b>Catalog Number:</b> 84175-4-PBS	<b>GenBank Accession Number:</b> NM_001102416.3	<b>Purification Method:</b> Protein A purification
<b>Size:</b> 100ug , Concentration: 1 mg/ml by Nanodrop;	<b>GeneID (NCBI):</b> 3827	<b>CloneNo.:</b> 241397G9
<b>Source:</b> Rabbit	<b>UNIPROT ID:</b> P01042-1	
<b>Isotype:</b> IgG	<b>Full Name:</b> kininogen 1	
	<b>Calculated MW:</b> 72kDa	

## Applications

**Tested Applications:**  
Cytometric bead array, Sandwich ELISA, Indirect ELISA, Sample test

**Species Specificity:**  
human

## Product Information

84175-4-PBS targets Kininogen 1 as part of a matched antibody pair:

MP01081-1: 84175-4-PBS capture and 84175-3-PBS detection (validated in Cytometric bead array)

MP01081-2: 84175-4-PBS capture and 84175-2-PBS detection (validated in Cytometric bead array, Sandwich ELISA)

MP01081-3: 84175-4-PBS capture and 84175-1-PBS detection (validated in Cytometric bead array)

Unconjugated rabbit recombinant monoclonal antibody in PBS only (BSA and azide free) storage buffer at a concentration of 1 mg/mL, ready for conjugation. Created using Proteintech's proprietary in-house recombinant technology. Recombinant production enables unrivalled batch-to-batch consistency, easy scale-up, and future security of supply.

This conjugation ready format makes antibodies ideal for use in many applications including: ELISAs, multiplex assays requiring matched pairs, mass cytometry, and multiplex imaging applications. Antibody use should be optimized by the end user for each application and assay.

## Storage

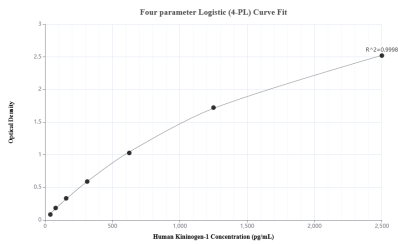
**Storage:**  
Store at -80°C.

**Storage Buffer:**  
PBS Only

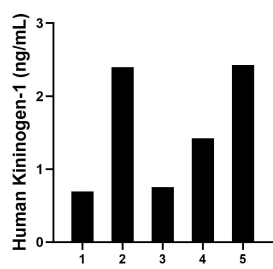
For technical support and original validation data for this product please contact:  
T: 1 (888) 4PTGLAB (1-888-478-4522) (toll free in USA), or 1(312) 455-8498 (outside USA)  
E: [proteintech@ptglab.com](mailto:proteintech@ptglab.com)  
W: [ptglab.com](http://ptglab.com)

This product is exclusively available under Proteintech Group brand and is not available to purchase from any other manufacturer.

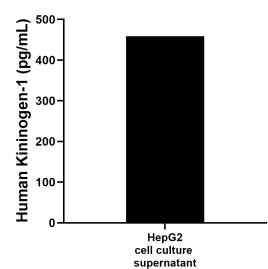
Selected Validation Data



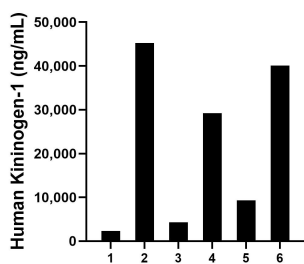
Sandwich ELISA standard curve of MP01081-2, Human Kininogen-1 Recombinant Matched Antibody Pair - PBS only. 84175-4-PBS was coated to a plate as the capture antibody and incubated with serial dilutions of standard Eg1162. 84175-2-PBS was HRP conjugated as the detection antibody. Range: 39.1-2500pg/mL



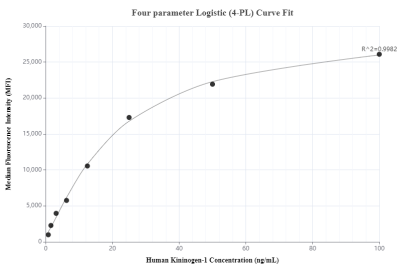
Saliva of five individual healthy human donors was measured. The human Kininogen-1 concentration of detected samples was determined to be 1.55 ng/mL with a range of 0.70 - 2.43 ng/mL



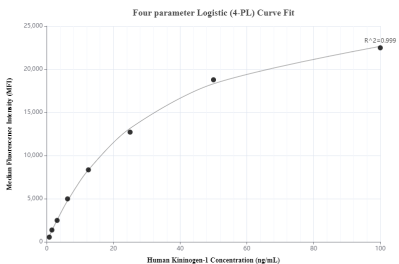
HepG2 (human hepatocellular carcinoma cells) was cultured in DMEM supplemented with 10% fetal bovine serum, 2.5 mM L-glutamine, 100 U/mL penicillin, and 100 µg/mL streptomycin sulfate. An aliquot of the cell culture supernate was removed, assayed for human Kininogen-1, and measured 458.7 pg/mL



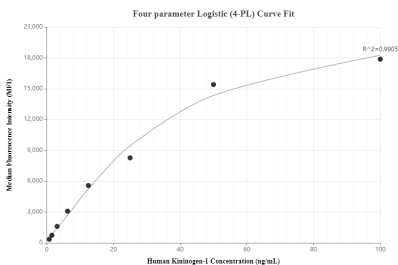
Serum of six individual healthy human donors was measured. The human Kininogen-1 concentration of detected samples was determined to be 21,735.55 ng/mL with a range of 2,325.73 - 45,247.60 ng/mL



Cytometric bead array standard curve of MP01081-1, Kininogen-1 Recombinant Matched Antibody Pair, PBS Only. Capture antibody: 84175-4-PBS. Detection antibody: 84175-3-PBS. Standard: Eg1162. Range: 0.781-100 ng/mL



Cytometric bead array standard curve of MP01081-2, Kininogen-1 Recombinant Matched Antibody Pair, PBS Only. Capture antibody: 84175-4-PBS. Detection antibody: 84175-2-PBS. Standard: Eg1162. Range: 0.781-100 ng/mL



Cytometric bead array standard curve of MP01081-3, Kininogen-1 Recombinant Matched Antibody Pair, PBS Only. Capture antibody: 84175-4-PBS. Detection antibody: 84175-1-PBS. Standard: Eg1162. Range: 0.781-100 ng/mL