

For Research Use Only

Kininogen-1 Recombinant antibody

Catalog Number: 84175-5-RR



Basic Information

Catalog Number: 84175-5-RR	GenBank Accession Number: NM_001102416.3	Purification Method: Protein A purification
Size: 100ul , Concentration: 1000 ug/ml by Nanodrop;	GeneID (NCBI): 3827	CloneNo.: 241397C11
Source: Rabbit	UNIPROT ID: P01042-1	Recommended Dilutions: WB 1:5000-1:50000
Isotype: IgG	Full Name: kininogen 1	
	Calculated MW: 72kDa	
	Observed MW: 48 kDa	

Applications

Tested Applications: WB, FC (Intra), ELISA	Positive Controls: WB : human plasma,
Species Specificity: human	

Background Information

Kininogens are inhibitors of thiol proteases. Kininogen 1 plays important role in Kinin-kallikrein system. This KNG1 gene contains 10 exons and encodes two proteins through alternative splicing: high molecular weight kininogen (HMWK) (72kDa) and low molecular weight kininogen (LMWK) (48kDa) (PMID: 37442062). HMWK is produced by the liver together with prekallikrein. It acts mainly as a cofactor on coagulation and inflammation, and has no intrinsic catalytic activity. LMWK is produced locally by numerous tissues, and secreted together with tissue kallikrein.

Storage

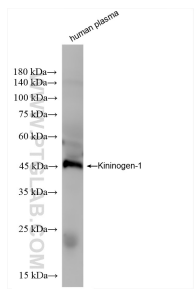
Storage:
Store at -20°C. Stable for one year after shipment.
Storage Buffer:
PBS with 0.02% sodium azide and 50% glycerol pH 7.3.
Aliquoting is unnecessary for -20°C storage

*** 20ul sizes contain 0.1% BSA

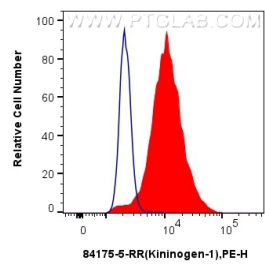
For technical support and original validation data for this product please contact:
T: 1 (888) 4PTGLAB (1-888-478-4522) (toll free in USA), or 1(312) 455-8498 (outside USA)
E: proteintech@ptglab.com
W: ptglab.com

This product is exclusively available under Proteintech Group brand and is not available to purchase from any other manufacturer.

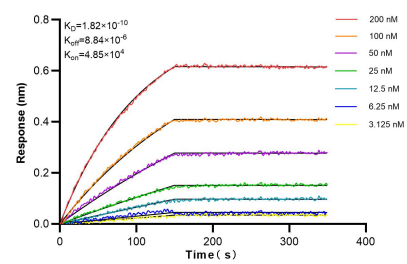
Selected Validation Data



Human plasma was subjected to SDS PAGE followed by western blot with 84175-5-RR (Kininogen-1 antibody) at dilution of 1:10000 incubated at room temperature for 1.5 hours.



1x10⁶ HT-29 cells were intracellularly stained with 0.25 ug Kininogen-1 Recombinant antibody (84175-5-RR, Clone:241397C.11) (red), or 0.25 ug Isotype Control (blue) and PE-Conjugated Goat Anti-Rabbit IgG(H+L). Cells were fixed with 4% PFA and permeabilized with Flow Cytometry Perm Buffer (PF00011-C).



Biolayer interferometry (BLI) kinetic assays of 84175-5-RR against Human Kininogen-1 were performed. The affinity constant is 0.182 nM.